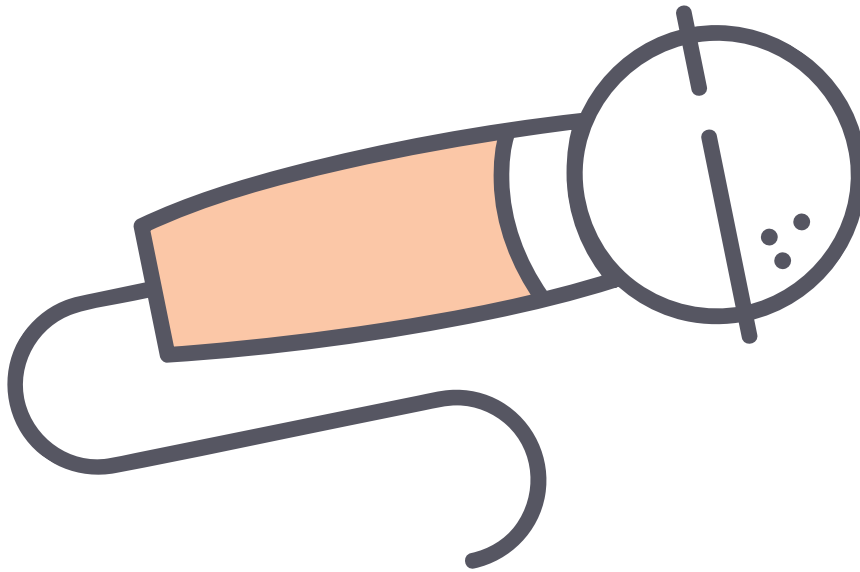


# THE SPHS STUDENT VOICE

*The Official Newsletter of IU Speech and Hearing Sciences*



## *Inside the Issue*

**SENIOR SPOTLIGHTS**

Page 2

**FAQ**

Page 3

**ON THE GROUND REPORT**

Page 4

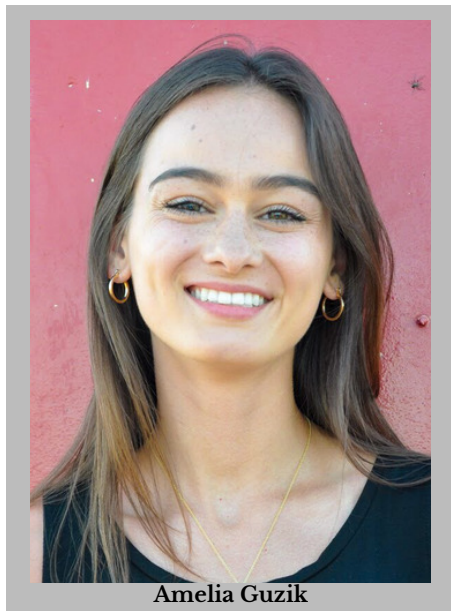
**WHAT I WISH I KNEW**

Page 5

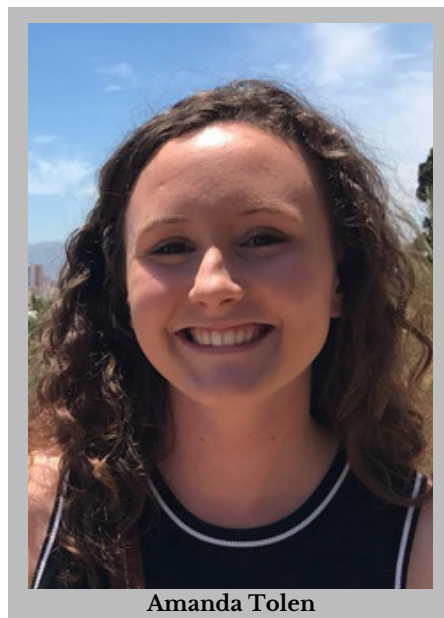
**SENIOR RECOGNITION**

Page 6

The Student Advisory Board wishes you the best of luck on finals and hope you have a great summer. We look forward to seeing you in the fall semester when we publish our next edition of the SPHS Student Voice!



Amelia Guzik



Amanda Tolen

## SENIOR SPOTLIGHTS

*by Maggie Goldberg, Hannah Olenec*

Every year, amazing students graduate from the SPHS department and go on to do great things. We decided to sit down with seniors Amelia Guzik and Amanda Tolen as they reflect on their time here at IU and look toward the future.

Amelia is a very involved student. For the past two years, she has worked in Dr. Gershkoff's Baby Language Lab as a research assistant. She has also participated in NSSLHA and has served as an undergraduate teaching assistant in the department. From her experiences in SPHS, Amelia says that these opportunities have been "...extremely helpful in gaining a deeper insight into SPHS coursework and also getting a sense of the work that goes into both research and teaching. This involvement has also given me the chance to form relationships with faculty and students that I wouldn't have known as well otherwise." Outside the department, Amelia also volunteers at the Boys and Girls Club.

Amelia's advice for underclassmen is to "get as involved as you can in SPHS or any other interests while always making sure you've preserved time for your own personal life. My SPHS involvement has really given me a stronger sense for what I aim to do professionally. It has also provided me valuable knowledge and skills that I think will help me a lot in my future as an SLP that I wouldn't have gotten just through the classroom."

After graduation, Amelia will be attending the University of Arizona's Speech-Language Pathology master's program in Tucson. This will be the final step to becoming an SLP for the older population. The thought of working with the elderly maintain or regain their communication skills is something Amelia has grown passionate about during her four years at IU.

Amanda is another successful SPHS student who has exciting plans for the future. She is deferring graduate school for a year to participate in a Fulbright Scholar program where she will be teaching English in Galicia, Spain. After this, she plans on continuing her education at the University of North Carolina to study Audiology with a focus on vestibular disorders. She is thrilled to have these opportunities as they are both dreams of hers.

Amanda is in the SPHS Departmental Honors Program and volunteers in Dr. Yi Shen's Applied Science Hearing lab. Outside of the department, she was on the accounting committee for IU Dance Marathon, is in a community service fraternity, and volunteers in the community. One of her favorite memories at IU has been helping hold up and announce the grand total of money raised in the 2018-2019 IUDM. Amanda's most important advice for underclassmen is "don't be afraid to branch out" and to "take advantage of opportunities." She also commented on how many clubs and organizations there are at IU, which means there is something for everyone!

# FREQUENTLY ASKED QUESTIONS

by Lauren Johnson, Maggie Louthan

**Q: How do I get involved in research labs within the SPHS Department?**

**A:** To join a research lab, familiarizing yourself with your professors is important. Consider approaching a professor conducting research in an area that is of interest to you. Speak with that professor and ask him/her if they are accepting students to work in their lab. Different professors have different procedures, but expressing interest is the first step in getting involved in research. Joining the departmental honors program is another great way to gain research experience.

**A:** If you're interested in getting involved with the Speech and Hearing sciences student advisory board, look for a call out meeting at the beginning of the Fall 2019 semester. Interested students will learn more about the Board and may apply at that time. Even if you do not want the full responsibilities of a Board member, the call out meeting will also provide information on joining a subcommittee, which assists Board members with tasks such as writing articles for our newsletter. We always encourage students to get involved and would love for new people to join us!

**Q: How can I get involved with the Speech and Hearing Sciences Student Advisory Board?**

**Q: What are Speech-Language Pathology Assistants?**

**A:** Speech-Language Pathology Assistants (SLPA) are support personnel. They must complete academic coursework, fieldwork, and on-the-job training in order to be certified by ASHA. Some of the responsibilities an SLPA may have include assisting the SLP during assessment of clients, implementing treatment plans, assist with the programming of augmentative and alternative communication (AAC) devices, in addition to providing training on the use of the AAC devices. (Information provided by <https://www.asha.org>)

# ON THE GROUND REPORT

## Phi Beta Kappa Induction

*by Emma Brown*

Eight SPHS students have recently been elected to Phi Beta Kappa, the oldest and most prestigious academic honor society in the country. Only a very select number of students at member institutions are elected annually. The Indiana University chapter of PBK recognizes the following students for the excellence and breadth of their undergraduate scholarly accomplishments:

Lindsey Altum  
Emma Brown  
Dominique Dickerson  
Carlie Glaze  
Courtney Jewell  
Allison King  
Lydia MacGregor  
Molly Miner



Left to right: Carlie Glaze, Emma Brown, Lindsey Altum, Dominique Dickerson. Not pictured: Courtney Jewell, Allison King, Lydia MacGregor, Molly Miner

## Honors Program Poster Presentation

*by Ailyn Vargas and Anna Hopkins*

Come support our honors students! The Speech and Hearing Sciences departmental Honors Program encourages outstanding students to undertake research projects through independent study with a faculty member and to enroll in special courses and seminars. Upon completion of this program, honor students present posters about their research project to the entire department. This is an exciting way to culminate the hard work they have put in over the past year and a half! Senior Amanda Tolen says that she is, "...really excited about the poster session because we've all been working hard on our research for so long, and it will be nice to share our experiences." If you're interested in getting involved with the honors program or research in general within the department, all are welcome to attend the poster session! The event will take place in the 2nd floor hallways of the Speech and Hearing Sciences department from 9 - 11 AM on Friday, April 26th. Come out and show support to your peers!



**MARK YOUR CALENDAR!**

**SPHS DEPARTMENTAL GRADUATION  
CEREMONY IS OPEN TO ALL ON MAY  
4TH, 12:30-2 PM ON THE LAWN  
OUTSIDE THE BUILDING**

# WHAT I WISH I KNEW

## Graduate School Application Advice

by Emma Brown and Anna Hopkins

As two graduating seniors, we have just gone through the application process. As we look back on the experience, we thought we would share some tips and tricks for students getting ready to apply next fall or in coming years.

Talking to current students at the schools you are interested in is the best way to truly get a feel for what your day-to-day life will be like in the program.

Start to narrow down your list of schools as soon as you can. Don't waste hundreds of dollars in application fees to schools you think you are interested in.

As difficult as it may be, don't compare yourself to others applying to the same program as you.

The application process is a marathon, not a sprint. Make a running to-do list and set due dates to hold yourself accountable.

Research the schools and programs so you can speak about specific experiences or faculty you would be interested in working with in your personal statement.

Visit the schools if possible! It allows you to truly picture yourself there and see if you would be able to live in that city.

Build a genuine relationship with the faculty members that you ask to write letters of recommendation for you.

Your personal statement is one of the most important aspects of your application. It is where you can show who you are beyond your GPA and GRE scores. Have friends and family read it over and revise it as much as needed.

Editorial Note: A previous edition of "What I Wish I Knew" incorrectly stated the writer's name. The correct author of the article is Taylor Strender. We apologize for the error.





# SENIOR RECOGNITION



After their years of hard work, our seniors have exciting future plans. Read on to see where they are heading!

## Name

## Post-Graduation Plans

Emma Brown	University of Iowa, MA SLP
Claire Cable	Rush University Medical Center, MS SLP
Arianna Cavallini	IUPUI, MSW
Anne Childers	Purdue University, MS SLP
Megan Diekhoff	Fulbright Scholar - Colombia
Lindsey Edwards	Graduate School
Amy Fish	Indiana University, Au.D.
Maddie Flack	Working in Indianapolis
Jordan Grant	Working in ABA Therapy
Kaylee Hausier	Working as an SLPA in Texas
Jackie Hentz	University of Houston, MA SLP
Savannah Hoke	Ohio University, MA SLP
Anna Hopkins	Purdue University, Au.D.
Bailkey Kaake	University of Memphis, MA SLP
Tori Larson	Gallaudet University, Au.D.
Rashel Roberts	Working with Collaborating for Kids
Alyxandria Sundheimer	Indiana University, Au.D.
Briana Tingle	Samford University, MS SLP
Amanda Tolen	Fulbright Scholar - Spain
Cortny Uttinger	Indiana University, MA SLP
Sarah Wasserman	Northeastern University, MA SLP
Dana Weiner	Preparing for Nursing School

Congratulations Seniors!

We wish you the best of luck on all your future endeavors!