



SUSTAINING HOOSIER COMMUNITIES

2017-2018

A partnership between Indiana University
& Lawrence County

Executive Summary





SUSTAINING HOOSIER COMMUNITIES

Table of Contents

Acknowledgements	3
About Sustaining Hoosier Communities	4
Letter from Jane Rogan, Director of IUSHC	5
About the IU Center for Rural Engagement	6
Letter from Bill Brown, Director of IUCRE	7
Environmental Sustainability Projects	8
Social Sustainability Projects	10
Economic Sustainability Projects	14
Moving Forward	17



SUSTAINING HOOSIER COMMUNITIES

Acknowledgements

Bringing any idea to life is not an easy nor solitary endeavor. It takes the dedication, time, advice and energy of countless individuals. The IU Sustaining Hoosier Communities initiative would not be alive today without the gracious assistance in matters great and small of the following outstanding humans:

Debbi Andry: Mayor's Assistant, City of Bedford
Jessica Barlow: San Diego State University Sage Project
Nick Benson: University of Iowa Initiative for Sustainable Communities
Megan Betz: IU Service-Learning Program
Bill Brown: IU Center for Rural Engagement
Mark Bryant: Clerk-Treasurer, City of Mitchell
Kyla Cox Deckard: IU Center for Rural Engagement
JD England: Mayor, City of Mitchell
James Farmer: Associate Professor, IU School of Public Health
Shawna Girgis: Mayor, City of Bedford
Dennis Groth: IU Vice Provost for Undergraduate Education
Marla Jones: Business and Community Development Director, City of Bedford
Gene McCracken: Lawrence County Commissioner
Sharlene Newman: IU Associate Vice Provost for Undergraduate Education
Andrew Predmore: IU Office of Sustainability
Elizabeth Pruett: IU Office of Engaged Learning
Lauren Robel: IU Provost
Michael Valliant: IU Service-Learning Program

Final and most effusive thanks go to the most proficient, efficient, multi-talented, capable and smart program assistant on the planet: Arielle Moss. Go, heal the world.



SUSTAINING HOOSIER COMMUNITIES

About Sustaining Hoosier Communities

Indiana University Sustaining Hoosier Communities is an initiative that partners with a local community within south central Indiana to explore, understand, and resolve challenges and projects identified by the community. Based on a tested model for university/community engagement that has been successfully implemented by over 25 universities and their community partners, Sustaining Hoosier Communities is a yearlong collaboration between Indiana University and a single community partner.

Indiana University’s faculty who opt in to Sustaining Hoosier Communities match their courses to the projects based on their areas of research, expertise, and teaching. Each course uses a cross-disciplinary approach to explore and solve sustainability issues identified by the community partner through project-based research. Faculty and community stakeholders agree before classes begin on a scope of work and deliverables for each class, and project liaisons are identified by the community and the university to coordinate this unified effort.

Sustaining Hoosier Communities is just one example of many types of community engagement Indiana University plans to pursue as part of the IU Center for Rural Engagement. By harnessing the research, expertise, energy, and service of Indiana University’s faculty, staff, and students, Indiana University and our local partners work collaboratively to improve the health, prosperity, and vitality of south central Indiana.

To learn more about IU Sustaining Hoosier Communities, visit www.shc.indiana.edu.

Sustaining Hoosier Communities Project Process





SUSTAINING HOOSIER COMMUNITIES

Letter from Jane Rogan, Director of Sustaining Hoosier Communities

Dear Lawrence County friends,

Our Sustaining Hoosier Communities (SHC) partnership with Lawrence County began some eighteen months ago when Mayor Shawna Girgis, Mayor JD England, County Commissioner Gene McCracken, and Business and Community Development Director, Marla Jones took a calculated risk and signed on to be the pilot community for the Sustaining Hoosier Communities (SHC) initiative. That bold move has led us to this final report.

SHC is based on the EPIC-N model (Educational Partnerships for Innovation in Communities - Network) which encourages communities and universities to build trusting partnerships in order to address a community's self-identified needs while offering hands-on experience and training to the next generation. By bringing together a community and the resources of the university—its administrative strengths, researchers, faculty and student capital—the community receives intense and focused attention on its concerns, while students get real applications of knowledge as they expand their skills with community partners and projects. Over the last ten months, 550 Indiana University students, mentored by 16 IU faculty from eight different IU schools, have gathered information, analyzed data, crafted designs, developed reports, and presented findings on 14 community-identified projects across the county. You can read more about these projects, the students' work and their findings in the reports that follow. While the faculty and their students are to be commended for their enthusiasm and creativity, so too should your community be applauded. In partnering with Indiana University on SHC, Lawrence County residents were asked to reflect on their assets and identify and prioritize challenges, and to then invite perfect strangers—albeit enthusiastic students—to further investigate and shine a light on some of the thorniest issues. Project leads and residents did not shy away from this challenge but met it head on.

For each project a community point person was identified, and these project leads gave freely their time and expertise. Your community showed up in droves for every town hall meeting and presentation, and they demonstrated their deep love for this community by filling out surveys at an unprecedented rate—one project received over 970 responses to a survey they distributed! It has been an immense privilege to partner with Lawrence County—our inaugural Sustaining Hoosier Community. The faculty, staff, and students of Sustaining Hoosier Communities are deeply indebted to your community leaders, mayors, town council members, county commissioners, educators, extension agents, faith communities, and citizens at-large. Through leaps of faith, Lawrence County has propelled its residents to the stars. Thank you for taking a leap of faith with Sustaining Hoosier Communities.

Jane Rogan
Director, Sustaining Hoosier Communities



SUSTAINING HOOSIER COMMUNITIES

About the IU Center for Rural Engagement

The Indiana University Center for Rural Engagement reimagines the relationships between the flagship campus of Indiana’s largest university and Indiana’s rural communities. The Center for Rural Engagement (CRE) works to improve the lives of Hoosiers by building durable partnerships between IU Bloomington and communities that catalyze existing community projects and priorities to make a transformative difference in student learning and community outcomes.

CRE calls on the research, teaching, and service of IU Bloomington faculty, staff, and students to address challenges and enhance opportunities identified by the community themselves. CRE also supports and complements efforts of other regional organizations to develop approaches that are flexible and scalable. In the process, IU students benefit from high-impact learning and volunteer activities while developing relationships with potential future employers in the region.

CRE provides additional support for the projects emerging from its IU Sustaining Hoosier Communities initiative to strengthen the relationships between the partnering counties, IU faculty, and students and to ensure the longevity and sustainability of these projects.

To learn more about the IU Center for Rural Engagement, visit www.rural.indiana.edu.



RURAL ENGAGEMENT

A BRIGHTER FUTURE *for* ALL



SUSTAINING HOOSIER COMMUNITIES

Letter from Bill Brown, Director of the Center for Rural Engagement

Dear Lawrence County colleagues,

Indiana University Sustaining Hoosier Communities is an initiative that partners with a local community within south central Indiana to explore, understand, and resolve challenges and address projects identified by the community. Based on a tested model for university/community engagement that has been successfully implemented by more than 25 universities and their community partners, Sustaining Hoosier Communities was launched this year through a yearlong collaboration with Lawrence County.

Every one of the 550 students participating in SHC class had an opportunity to work directly with Lawrence County community members to understand their needs and learn more about the history, culture, and identity of the community. Through active collaboration with community project leads, students learned to communicate effectively with professionals in their fields of study and to understand how to apply their coursework theory to real-life problem solving. By engaging with SHC, Lawrence County provided students with valuable insight into the community's challenges and goals and granted them opportunities for learning and professional development. In return, the community benefitted from faculty-mentored and student-generated ideas, creativity, and energy.

Sustaining Hoosier Communities is just one example of the many types of community engagement Indiana University is pursuing through the Center for Rural Engagement. By harnessing the research, expertise, energy, and service of Indiana University's faculty, staff, and students, Indiana University and our local partners work collaboratively to improve the health, prosperity, and vitality of south central Indiana.

While the SHC engagement in Lawrence County is wrapping up, we are pleased to announce that the IU Center for Rural Engagement will facilitate an additional year of work of one of the SHC projects to examine community perceptions of addiction—and mental health issues related to addictions—and develop recommendations for next steps. The project is led by IU School of Social Work Professor John Keesler in partnership with Lawrence County Sheriff Mike Branham and Bedford Mayor Shawna Girgis. This project is conducted in concert with IU's Grand Challenges program.

By developing trusted partnerships, the IU Center for Rural Engagement collaborates with our regional communities to create a legacy of strength and improve lives in Indiana. Thank you, Lawrence County, for your partnership.

Bill Brown
Executive Director, Center for Rural Engagement



ENVIRONMENTAL SUSTAINABILITY

AVOCA STATE FISH HATCHERY

COURSE NAME

SPH-P305: Integrated Resource Management

IU FACULTY

James Farmer, School of Public Health

COMMUNITY LIAISON

Barry Jeskewich, Bedford Parks & Recreation

PROJECT DESCRIPTION

The decommissioned Avoca State Fish Hatchery is in the midst of transfer from Indiana’s Department of Natural Resources to the Lawrence County Community. Students spent the semester working with community leaders to evaluate the site in order to propose a long-term vision and management plan for this historical resource.



FINAL DELIVERABLES

- Distribution of community stakeholder survey that received 700 responses
- 10-year plan & budget for the use and preservation of the Avoca Fish Hatchery

GUS GRISSOM TRAIL MONITORING APPLICATION

COURSE NAME

School of Informatics Capstone Project

IU FACULTY

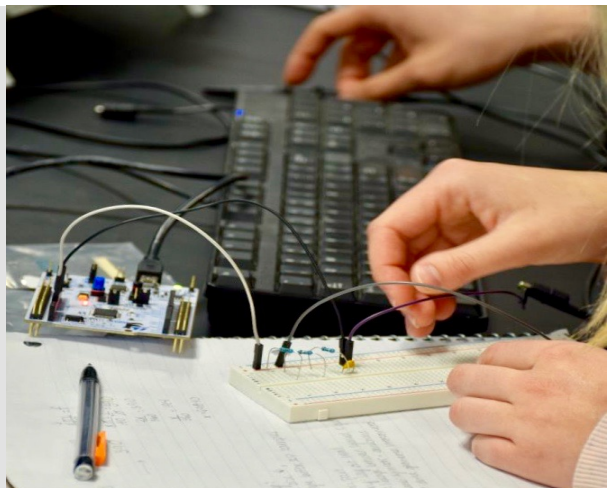
Bryce Himebaugh, School of Informatics

COMMUNITY LIAISON

Allen Burris, Pastor – Mitchell Church of Christ

PROJECT DESCRIPTION

Mitchell, IN is the hometown of Gus Grissom, the second American to travel to space. Informatics students dedicated their capstone project to designing a mobile application that would provide users with a virtual tour of the proposed Gus Grissom Trail that links Gus Grissom’s Boyhood Home, the Gus Grissom Monument, and the Gus Grissom Memorial in Spring Mill State Park.



FINAL DELIVERABLES

- Prototype of the mobile application
- *Hopeful deployment in 2018-2019*



ENVIRONMENTAL SUSTAINABILITY

HOOSIER NATIONAL FOREST DARK SKY PARK DESIGNATION

COURSE NAME

CSCI-P442: Digital Systems

IU FACULTY

Bryce Himebaugh, School of Informatics

COMMUNITY LIAISON

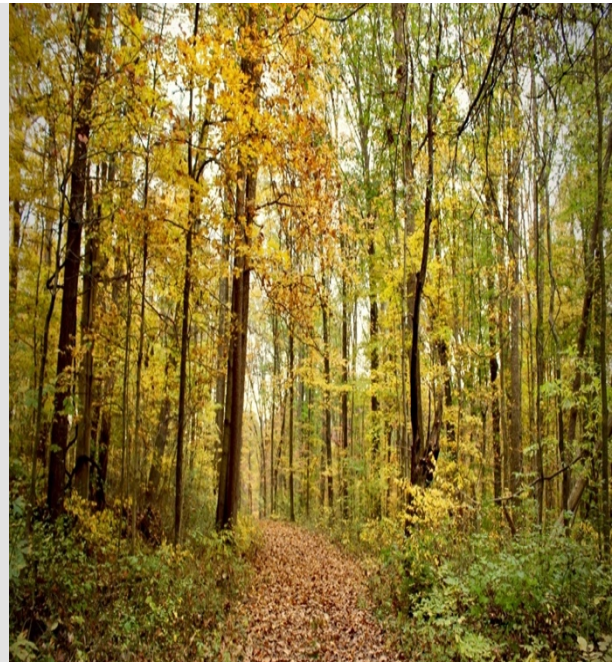
Andrea Crain, Public Affairs Officer

PROJECT DESCRIPTION

To increase the number of visitors and preserve the natural beauty of the Hoosier National Forest, students worked with public affairs officer, Andrea Crain, to develop low-power, wireless light sensors and a web interface to track light pollution. The data from this system will be used to satisfy the requirements for an ongoing application for the Hoosier National Forest to receive International Dark Sky Park designation.

FINAL DELIVERABLES

- Prototype for a forest-based light monitoring device
- Prototype for an accelerometer-based trail counter to track number of pedestrians
- *Web interface and light sensors will be deployed in the test area in 2018-2019*





SUSTAINING HOOSIER COMMUNITIES

SOCIAL SUSTAINABILITY

MITCHELL & BEDFORD COMMUNITY GARDENS

COURSE NAME

SPH-F150: Intro to Life Span Development

IU FACULTY

Deb Getz, School of Public Health

COMMUNITY LIAISON

Rachel Beyer, Community Wellness Coordinator

PROJECT DESCRIPTION

Both Mitchell Accessible Gardens (MAG) and Bedford Garden Park (BGP) expressed the need for greater visibility and participation throughout their communities. Students created fundraising, marketing, and community engagement plans tailored to the specific needs and target demographics for each garden.

FINAL DELIVERABLES

- Final reports focusing on targeted populations identified by BGP and MAG
- Educational programming, marketing, and outreach strategies for BGP and MAG



YOUTH FINANCIAL LITERACY CURRICULUM

COURSE NAME

SPH-F180: Survey of Practice for Youth & Families

IU FACULTY

Deb Getz, School of Public Health

COMMUNITY LIAISON

Larry Will, Boys & Girls Club of Lawrence County

PROJECT DESCRIPTION

Students developed and led a personal financial health curriculum for middle school students in the Boys & Girls Club of Lawrence County. Lessons complemented the Boys & Girls Club’s existing Money Matters program and focused on financial well-being and planning.

FINAL DELIVERABLES

- Three, 45-minute financial literacy lesson plans for 22 middle school students that met Indiana Academic Standards





SUSTAINING HOOSIER COMMUNITIES

SOCIAL SUSTAINABILITY

BEDFORD DIVERSITY COUNCIL

COURSE NAME

MSCH-R428: Public Relations, Planning & Research

IU FACULTY

Minjeong Kang, Media School

COMMUNITY LIAISON

Shawna Girgis, Mayor of Bedford

PROJECT DESCRIPTION

Students worked with Mayor of Bedford, Shawna Girgis, to investigate Bedford residents' attitudes towards racial/cultural sensitivity by conducting interviews with community leaders and distributing online surveys to Lawrence North Community students, parents, and educators to better understand the factors affecting issues of diversity in the City of Bedford.



FINAL DELIVERABLES

- Four surveys with 1,000+ responses
- Five reports with recommendations to address racial/cultural diversity in Bedford
- Initiation of the Bedford Diversity Council

ADDRESSING INDIANA'S OPIOID CRISIS – SOCIAL WORK

COURSE NAME

SWK-S502: Research Methods in Social Work
SWK-S505: Social Policy, Analysis, and Practice

IU FACULTY

John Keesler & Kristen Hamre, Social Work

COMMUNITY LIAISON

Nedra Fleetwood, Chief Probation Officer

PROJECT DESCRIPTION

As part of the statewide effort addressing the opioid epidemic in Indiana, students are exploring the impacts of drug use on individuals and their families to understand how to prevent, reduce, and treat drug addiction.



FINAL DELIVERABLES

Projects are ongoing and are receiving additional support from the IU Center for Rural Engagement.



SUSTAINING HOOSIER COMMUNITIES

SOCIAL SUSTAINABILITY

WHAT MOVES YOU MITCHELL?

COURSE NAMES

BIOL-P451: Integrative Human Physiology

SPH-K553: Physical Activity in Health

SPH-K554: Seminar in Physical Activity & Wellness

SPH-K556: Physical Activity Assessment in Public Health

IU FACULTY

Whitney Schlegel, Department of Biology

Jeanne Johnston, School of Public Health

COMMUNITY LIAISON

Karin Dubois, Indiana Healthy Communities Liaison

PROJECT DESCRIPTION

To address Mitchell’s high rates of hypertension and cardiovascular disease, students used community-based participatory research and worked with Mitchell leaders to propose intervention programs, create educational materials, organize a community health event, and initiate surveys assessing the general health and physical activity needs of Mitchell residents to encourage physical activity and promote healthier lifestyles.

FINAL DELIVERABLES

- Several educational materials on physical activity distributed throughout Mitchell
- Mitchell Physical Activity Map identifying physical activity opportunities
- Trail-use survey to better understand the use of the Blue Jacket Trail in Mitchell
- General health survey to evaluate and assess physical activity needs of residents
- Multiple recommendations for health programs tailored to specific needs of Mitchell demographics
- “I Heart Mitchell” community health event
- *12-week intervention program will be implemented in 2018-2019*





SOCIAL SUSTAINABILITY

ASSESSING LEGAL NEEDS OF LAWRENCE COUNTY'S UNDERSERVED

COURSE NAME

LAW-B515: Project Management for Lawyers

IU FACULTY

Victor Quintanilla, Maurer School of Law

COMMUNITY LIAISON

John Plummer III, Lawrence County Circuit Court

PROJECT DESCRIPTION

As part of Maurer School of Law's Access-to-Justice (A2J) Program, students worked with Lawrence County Circuit Court to assess the most pressing and unmet legal needs of Lawrence County's underserved populations. By researching the current legal services delivery systems, students helped recommend ways to improve the delivery of civil legal services to low-income Hoosiers in Lawrence County.

FINAL DELIVERABLES

- Memorandums for the Indiana Coalition for Court Access that examine current access to legal services and recommend ways to improving this access to underserved residents in Lawrence County
- *Current research is ongoing and receiving additional support from the IU Center for Rural Engagement.*





ECONOMIC SUSTAINABILITY

BEDFORD SHARED WORKSPACE

COURSE NAME

SOAD-D272: Interior Design Studio 3

IU FACULTY

Marleen Newman & Louis Joyner, Art & Design

PROJECT DESCRIPTION

Students reimagined and redesigned the interior spaces of the Indiana Limestone Company headquarters in Bedford, IN into an incubator workspace to attract young professionals and entrepreneurs to work and stay in Bedford.

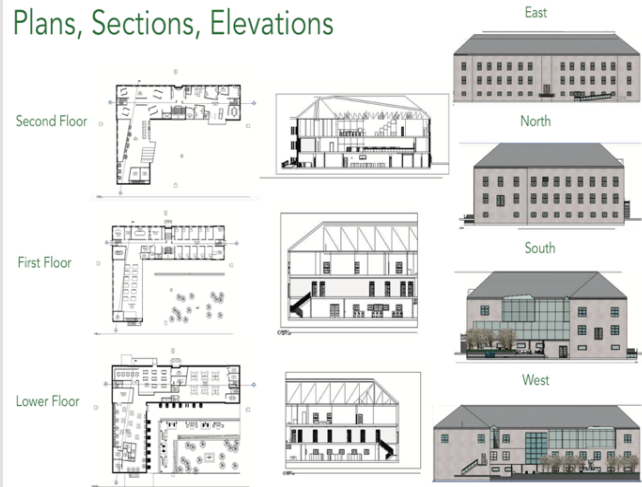
FINAL DELIVERABLES

- 27 design proposals for the Indiana Limestone Company headquarters
- Multiple innovative, student-generated solutions for adaptive reuse of the Indiana Limestone Company headquarters

COMMUNITY LIAISON

Shance Sizemore, Bedford Chamber of Commerce

Plans, Sections, Elevations



BEDFORD & MITCHELL GATEWAY DESIGNS

COURSE NAME

SOAD-A211: Design for Social Impact: Graphic + Interior Design

IU FACULTY

Jenny El-Shamy & Jon Racek, Art & Design

COMMUNITY LIAISON

Marla Jones, Bedford Business Development Director
Mark Bryant, Mitchell Clerk & Treasurer

PROJECT DESCRIPTION

Students created designs for logos and city gateways to be produced from limestone that reflect the historical and cultural identity for both Mitchell and Bedford, IN. The design to the right was chosen as the winning gateway marker.

FINAL DELIVERABLES

- Multiple logo proposals for Bedford & Mitchell
- Multiple gateway marker designs for Bedford & Mitchell
- *Budget for winning design in progress*



BEDFORD

Design by Tommy DeNardo

MATERIALS:

-  ROUGH LIMESTONE
-  SMOOTH LIMESTONE
-  STAINLESS STEEL



ECONOMIC SUSTAINABILITY

BEDFORD COMPLETE STREETS

COURSE NAME

SPEA-S515: Sustainable Communities

IU FACULTY

Bill Brown, School of Public & Environmental Affairs

COMMUNITY LIAISON

Dan Kirk, Bedford Director of Planning & Zoning

PROJECT DESCRIPTION

Bedford drafted a Complete Streets policy that identified future areas of continued improvement to city infrastructure. Students researched planning documents and offered suggestions regarding how to implement a Complete Streets policy for Washington Avenue, I & J Streets, and Mitchell Road.



I Street, Bedford

FINAL DELIVERABLES

- Prioritization criteria to move Complete Streets policy forward
- Recommendations & resources on implementing community-level education and public awareness strategies for transportation improvements

HIGHWAY 50 BYPASS SCOPING STUDY

COURSE NAME

SPEA-L563: The Planning Process

IU FACULTY

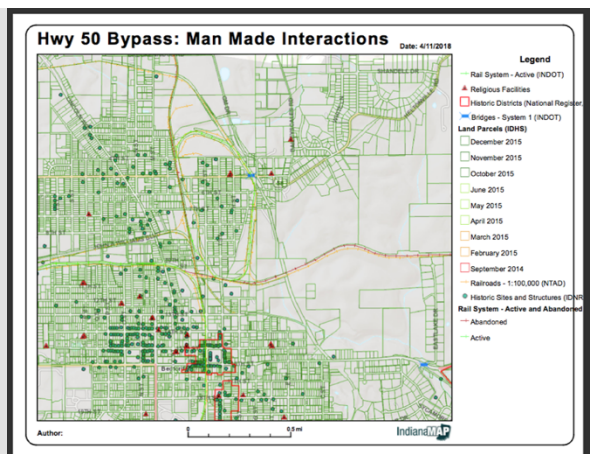
Frank Nierzwicki, School of Public & Environmental Affairs

COMMUNITY LIAISON

Dan Kirk, Bedford Director of Planning & Zoning

PROJECT DESCRIPTION

Bedford has proposed a new bypass connection for Highway 50 to provide an alternative route for thru-traffic around the Bedford downtown. Students conducted a scoping study of the potential bypass to determine the feasibility of this project



FINAL DELIVERABLES

- Detailed maps of potential roadway corridors
- Budget proposal for completion of bypass
- “Next steps” in moving forward with the Indiana Department of Transportation



ECONOMIC SUSTAINABILITY

LITTLE THEATRE OF BEDFORD

COURSE NAME

AADM-Y650: Seminar in Arts Administration

IU FACULTY

Ursula Kuhar, School of Public & Environmental Affairs

COMMUNITY LIAISON

Penny & Jack May, Little Theatre of Bedford

PROJECT DESCRIPTION

Little Theatre of Bedford (LTB) is an established community theatre with a rich history and offers performances and educational programs year-round. LTB identified the following challenges: board governance, fundraising & development, strategic communications, finance & operations, and artistic & educational programming. Students posed as a consultancy firm to address these five areas of concern.

FINAL DELIVERABLES

- Five feasibility studies for each area of concern
- Templates for programming, grants, and press releases
- Beginning of a board handbook
- Assessment of financial stability & framework for sustainability
- Estimates for CRM/technology platforms





SUSTAINING HOOSIER COMMUNITIES

Moving Forward

After a successful pilot year partnering with Lawrence County, IU Sustaining Hoosier Communities and the Center for Rural Engagement will continue working with IU faculty and students and their Lawrence County community partners to continue supporting and ensuring the sustainability of their efforts from this past 2017-18 academic year.

For the 2018-19 academic year, IUSHC's next community partner will be Orange County. Orange County is a rural community in south central Indiana that includes four incorporated towns: the county seat of Paoli, New Orleans, French Lick, and West Baden. Unincorporated communities include Chambersburg, Leipsic, Prospect, Orangeville, and Valeene. Home to a local food cooperative, a countywide community garden, agricultural youth programs, an artist-in-residence program, and a restored, historic resort, Orange County is in a unique position to progress through a tourism economy, relying on its historical, agricultural, and recreational roots.

IUSHC is looking forward to building this new partnership with Orange County as well as maintaining close ties with Lawrence County in the years to come.



SUSTAINING HOOSIER COMMUNITIES



RURAL ENGAGEMENT

A BRIGHTER FUTURE *for* ALL