

# School of Education Faculty Meeting

---

Spring 2011

April 29, 2011



INDIANA UNIVERSITY

# Welcome

## Gerardo Gonzalez

April 29, 2011

# Promotions

---

# Retiring Faculty

---

# New Construction

---

# Increasing Visibility of Programs

---

# Enrollment Trends

---



# Credit Hours Spring 2011 IUPUI

- Undergraduate credit hours down 364 (-4%) from last spring.
- Graduate credit hours down 397 (-12%).





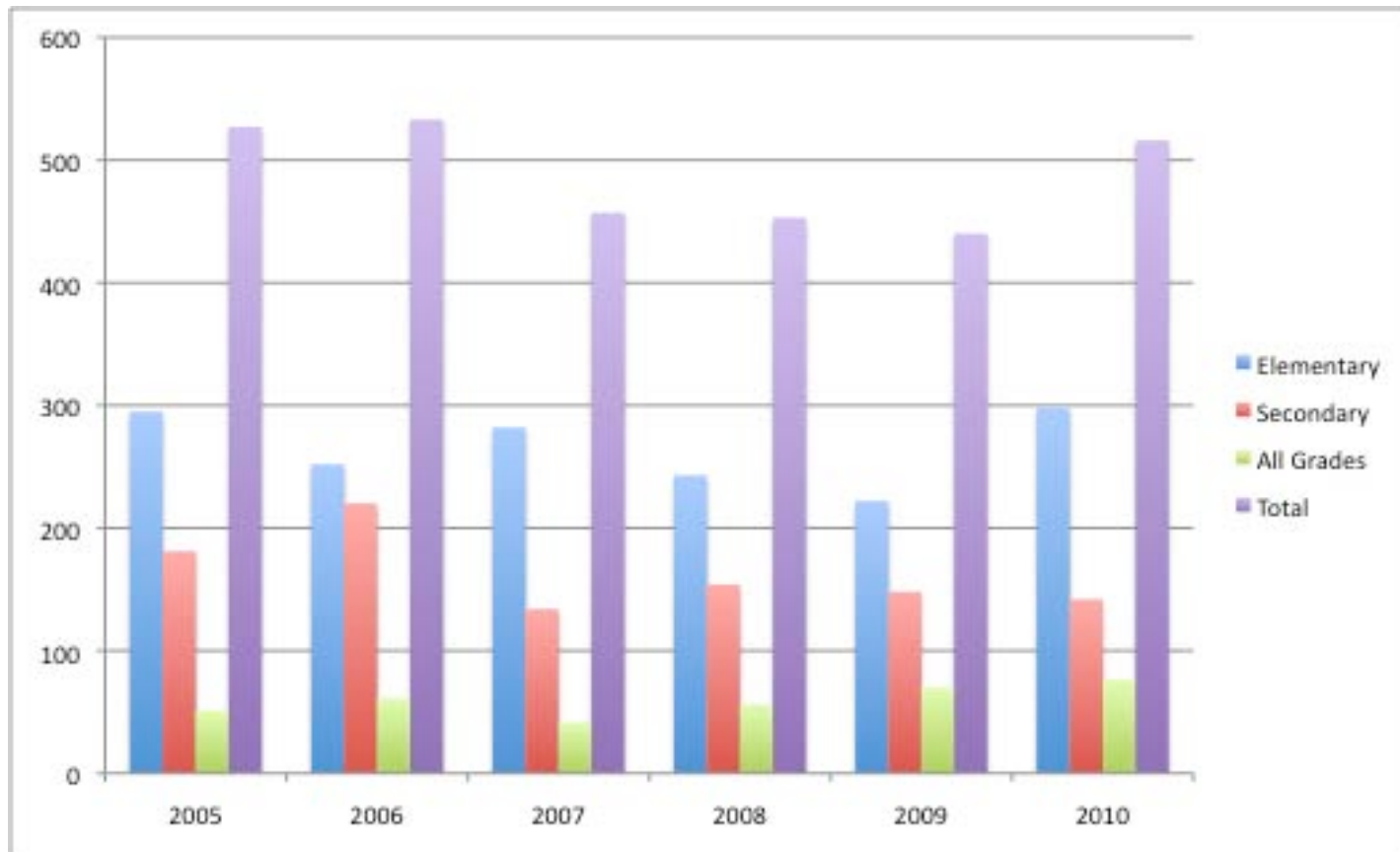
# Credit Hours Summer I IUPUI

- Undergraduate credit hours: Up 156 hours (39%) from last summer (2 weeks prior).
- Graduate credit hours: Down 160 hours (-10%), but Summer in the City classes start mid June.



INDIANA UNIVERSITY

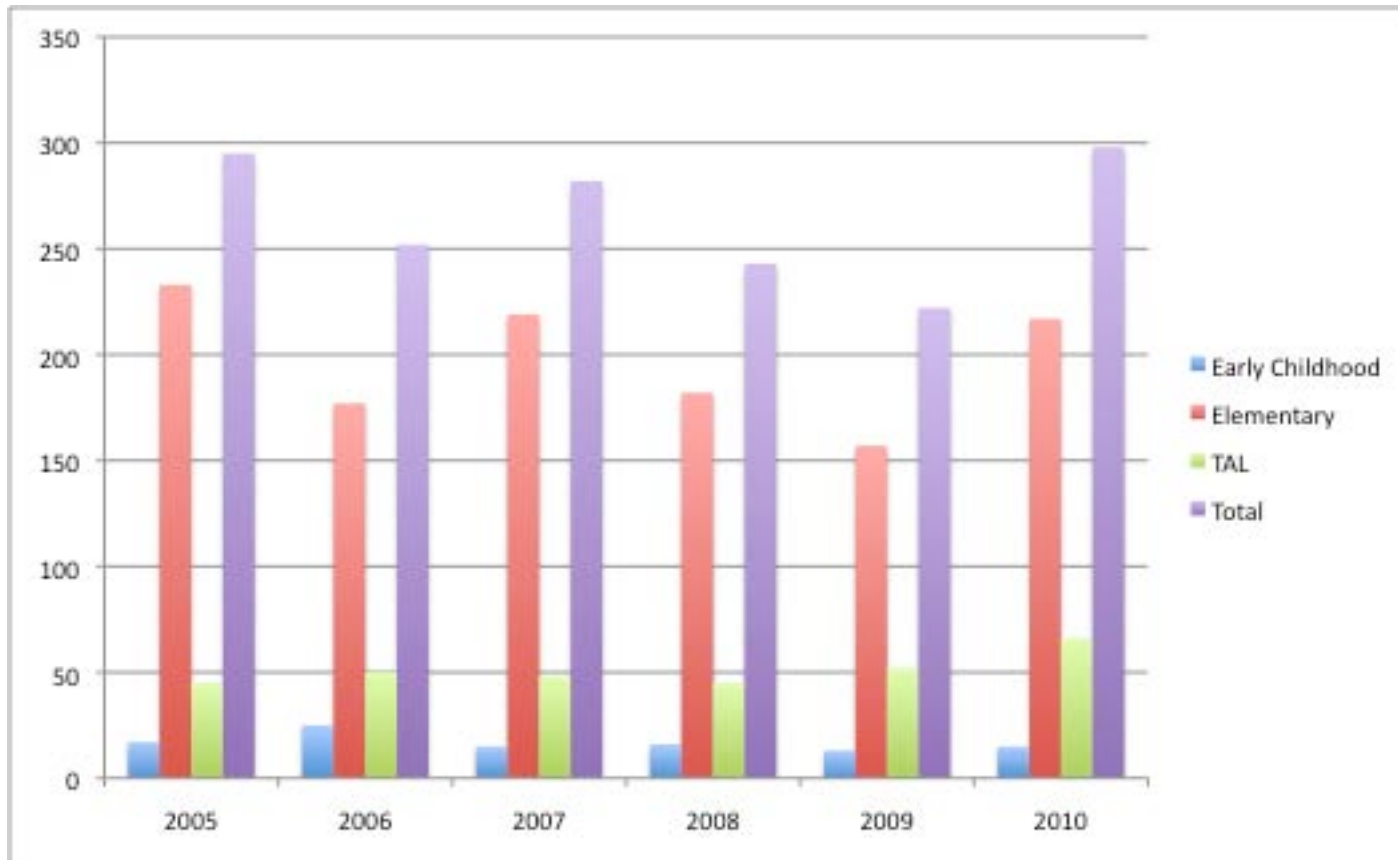
# Total Enrollment 2005-2010 IUB





INDIANA UNIVERSITY

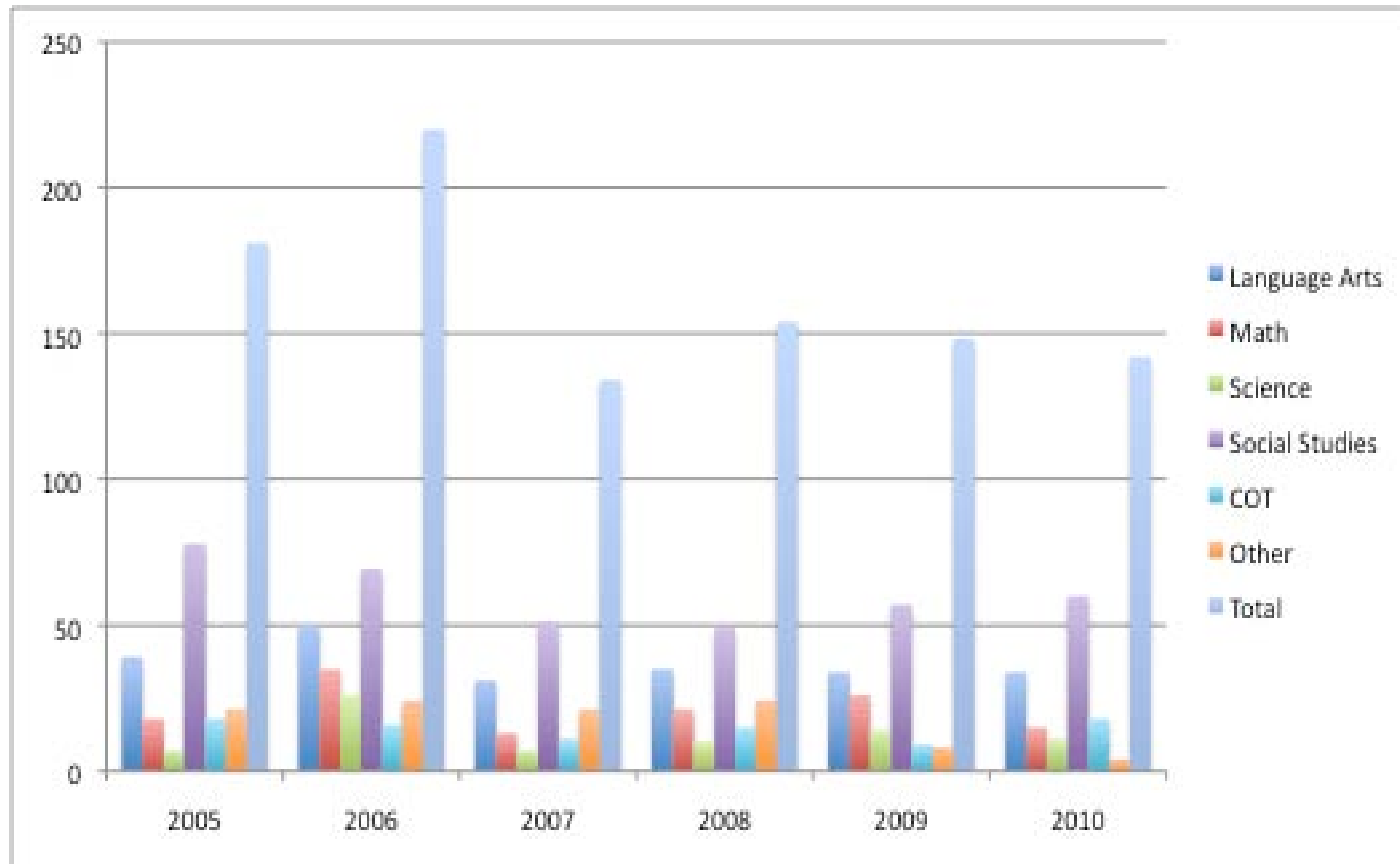
# Enrollment in Elementary Programs 2005 – 2010 - IUB





INDIANA UNIVERSITY

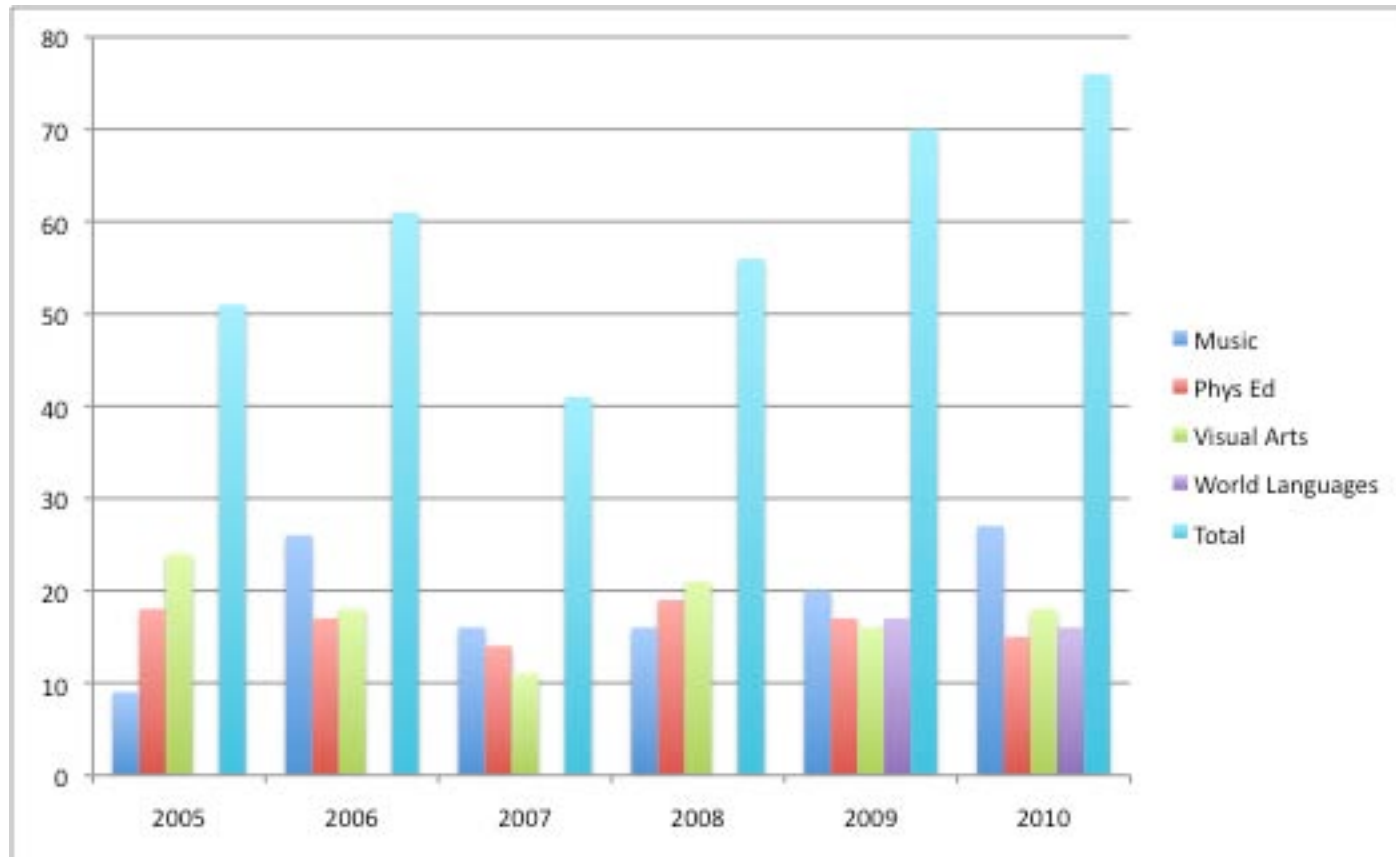
# Enrollment in Secondary Programs 2005 – 2010 - IUB





INDIANA UNIVERSITY

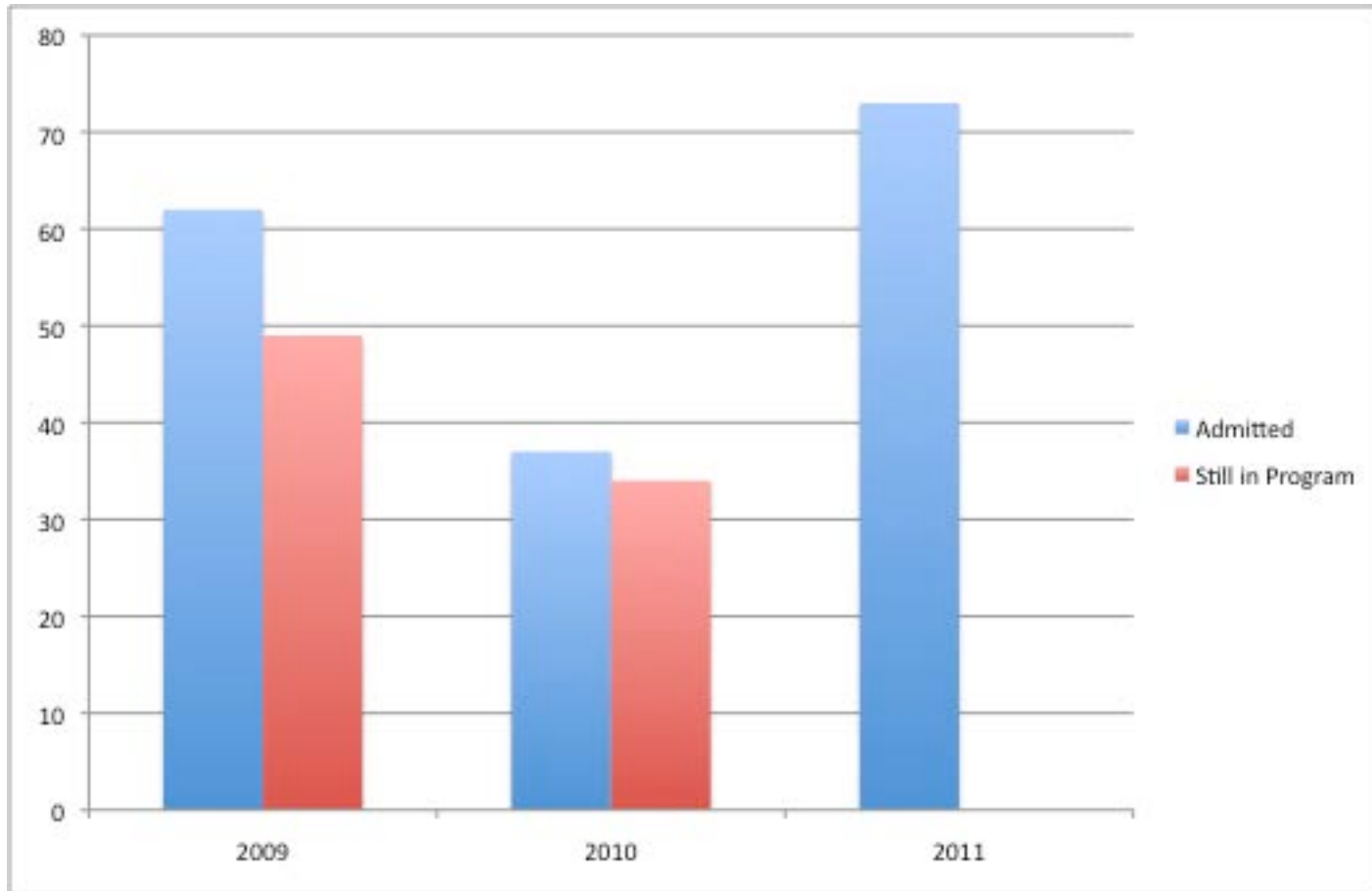
# Enrollment in All Grades Programs 2005 – 2010 - IUB





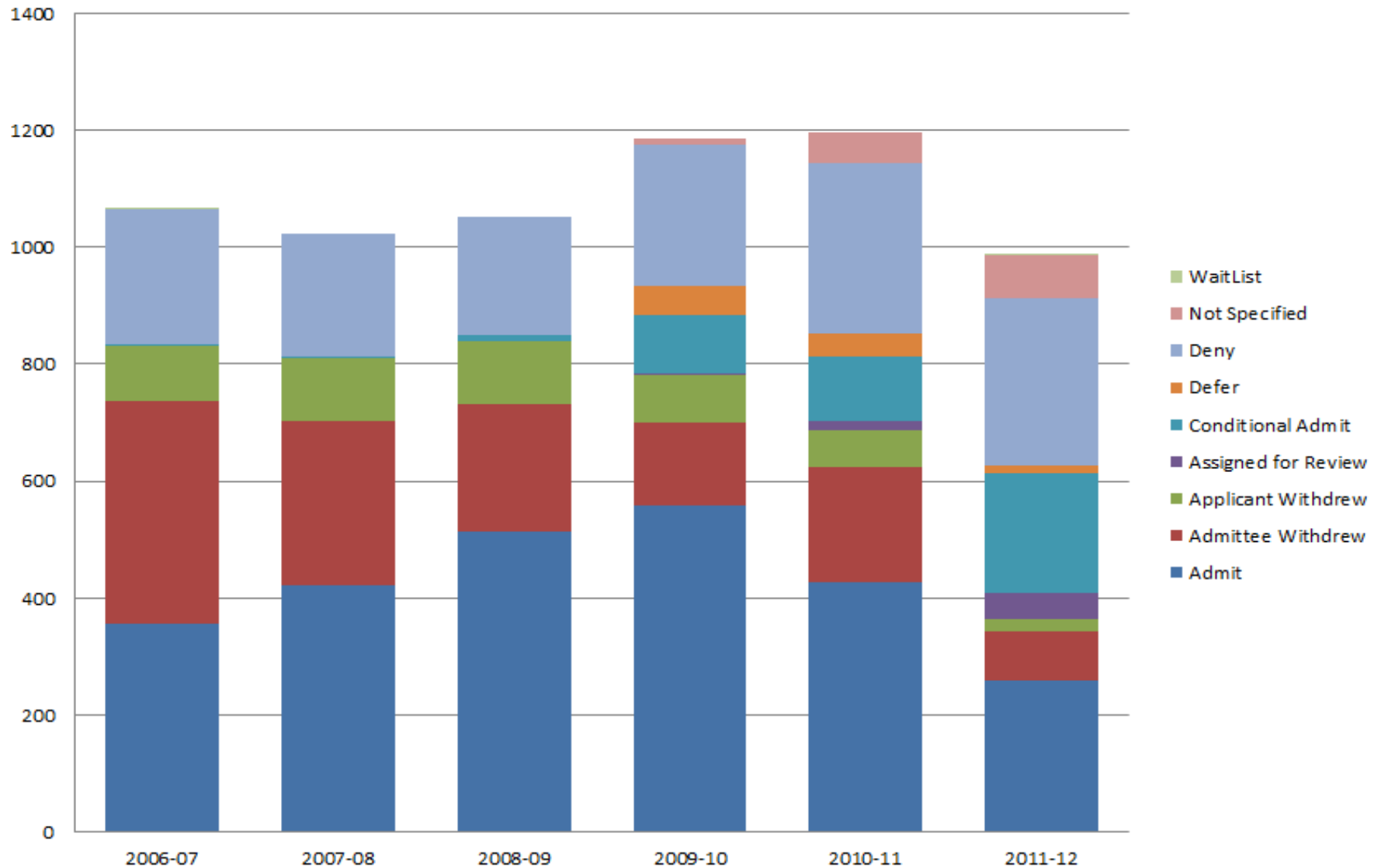
INDIANA UNIVERSITY

# Direct Admits 2009 - 2011 IUB



# Indiana University School of Education Graduate Admission by Academic Year

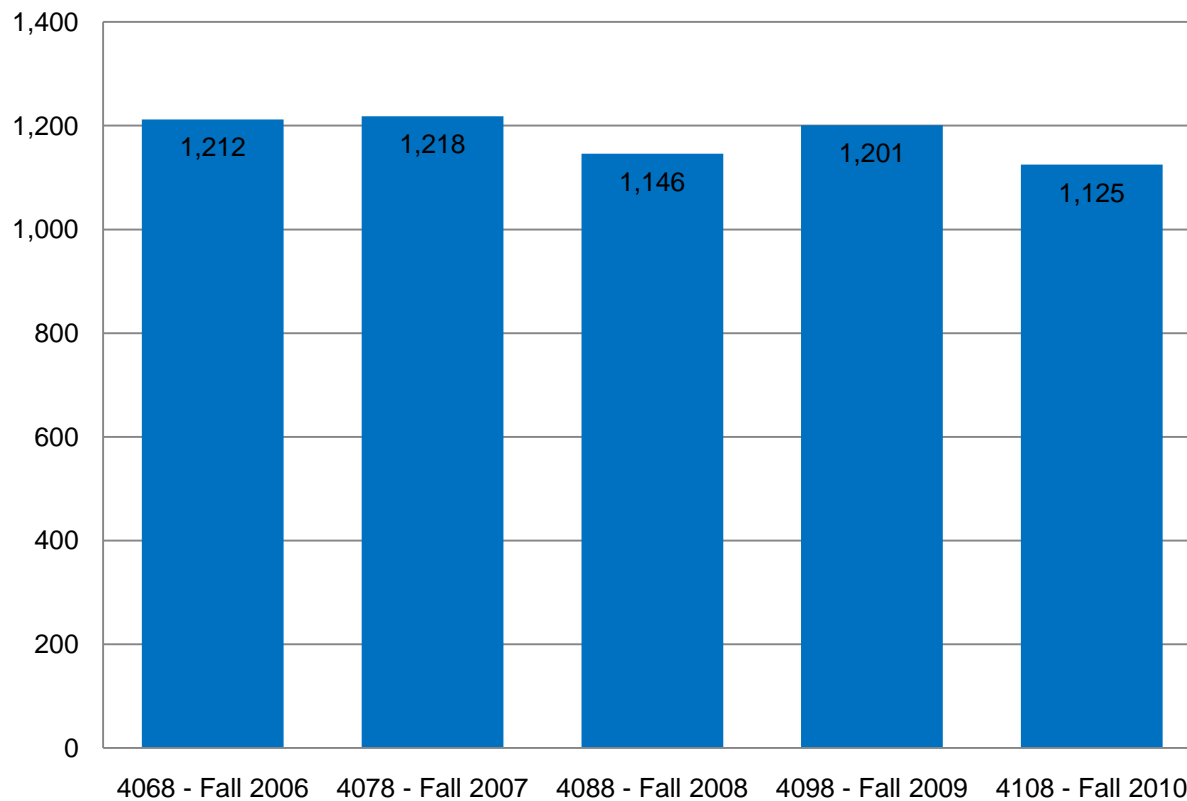
*Note: Academic Year 2011-12 is still in progress*





# INDIANA UNIVERSITY

## Indiana University School of Education Graduate Enrollment for IUB *Five Year Comparison*

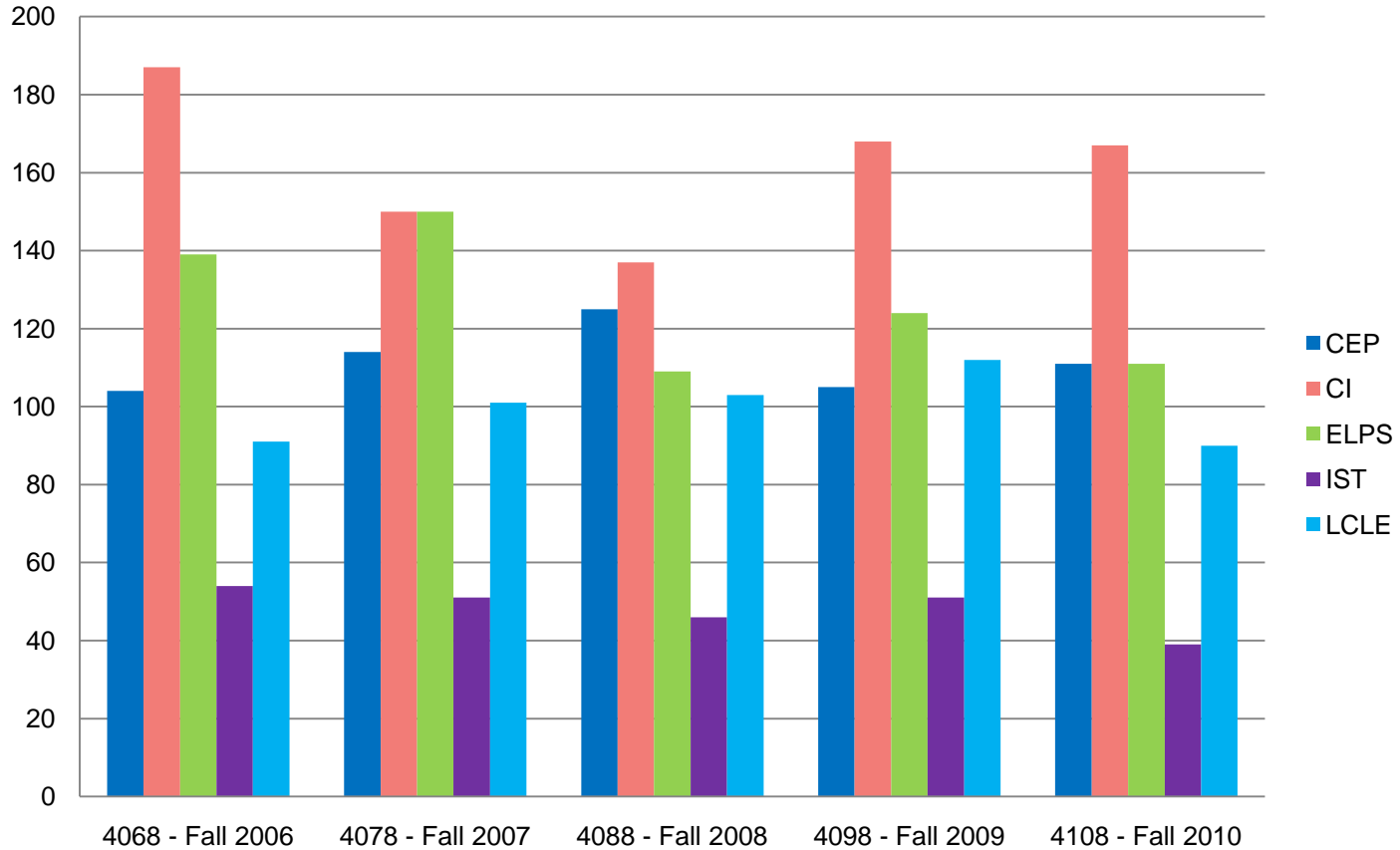






INDIANA UNIVERSITY

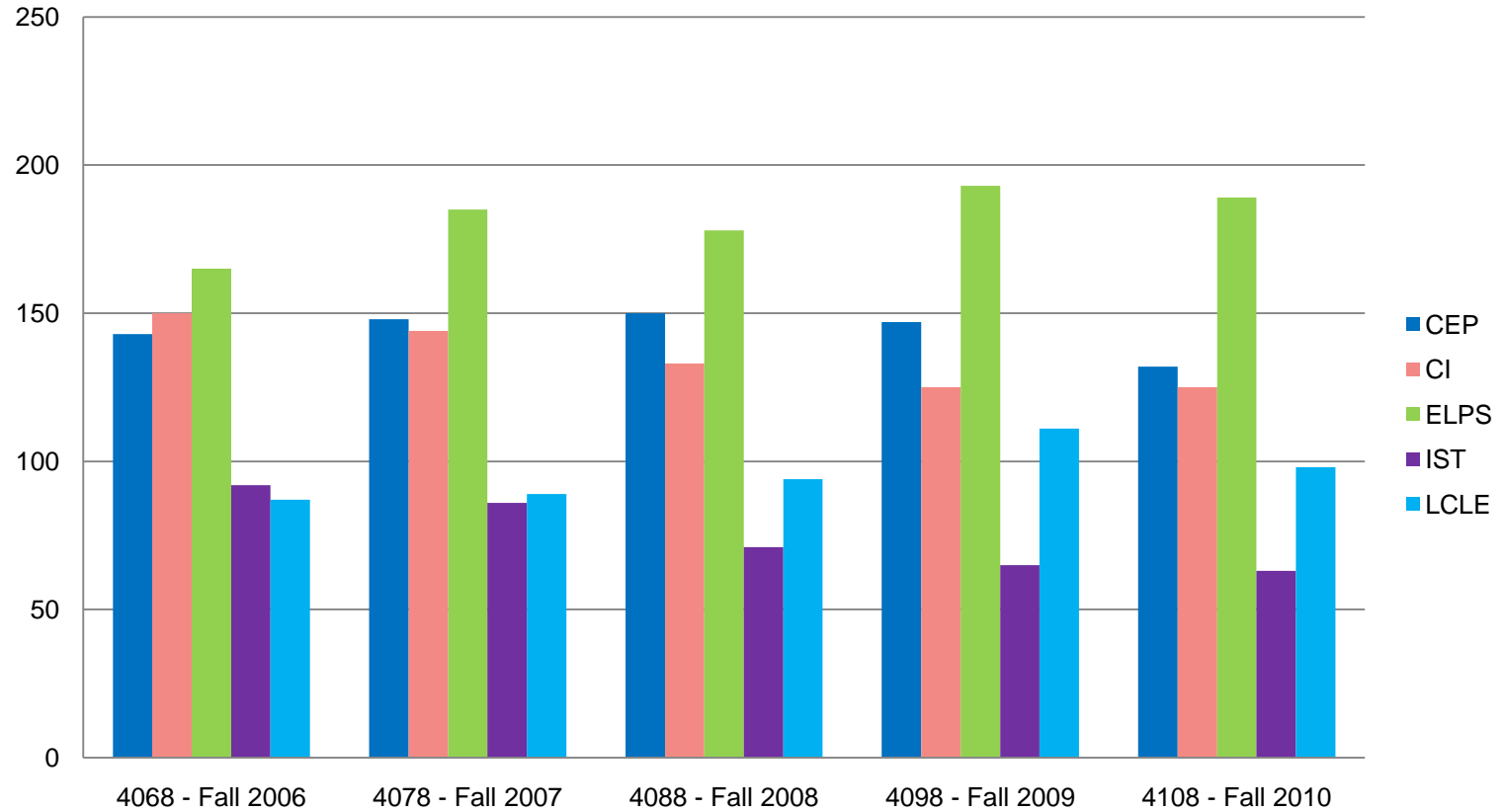
Indiana University School of Education  
Masters, Specialist, Grad Certificate and Certification Enrollment  
*Five Year Comparison for IUB*





# INDIANA UNIVERSITY

## Indiana University School of Education Doctoral Program Enrollment *Five Year Comparison for IUB*





# INDIANA UNIVERSITY

IUconnectED Home - Mozilla Firefox  
http://iuconnected.iu.edu/

Most Visited Scholar IU SOE Oncourse OneStart Ed Rooms Fac Annual Rep Breeze craigslist div16 post jobs TechNYTimes Google Maps Pandora

Google Search

Ψ IUconnectED Home

Ψ INDIANA UNIVERSITY

Search GO

# IUconnectED

Your online partnership with the School of Education

Home IUconnectED About IUconnectED Professional Development Take a Course Certificate & Degree Programs Connect with Us Student Resources



## Welcome!

**IUconnectED**, the distance learning unit within the School of Education, offers a variety of nationally-recognized graduate courses, certificates, and degree programs. Our courses provide the academic rigor and interactive environment to help busy professionals gain knowledge without sacrificing their other obligations. Achieve your personal and career goals by earning an excellent education through the convenience of online learning.

<http://iuconnected.iu.edu/>

Done

# R&D Trends and Opportunities

---

Spring 2011 School of Education Faculty Meeting



## Sponsored Activity Comparison Year to Date (July 1-March 31)

- IUPUI

	2008-09		2009-10		2010-11	
	Number	Dollars	Number	Dollars	Number	Dollars
Submitted	16	\$940,933	19	\$1,979,700	15	\$1,692,339
Awards	17	\$1,662,205	14	\$1,777,047	12	\$1,750,623
Expenditures		\$845,036		\$1,043,780		\$1,311,205
Indirect	10	\$90,377	11	\$123,650	10	\$121,513
Average Indirect		5.4%		7.0%		6.9%



INDIANA UNIVERSITY

# CUME Sponsored Research Colloquia

## **Unlikely Bedfellows- Charter, Church and University: A Collaborative Story**

Gina Yoder, Trish Weis, Paula Magee, Carol Matern, Natasha Flowers, Elee Wood

## **Longitudinal Study of ESL Instructional Coaching for Mainstream Teachers**

Annela Teemant

## **Formative Assessment: Instructor and Intern Perspectives**

Anne Ociepka, Gina Yoder, Patricia Weis

## **Narratives of Organizational Identity Amid Risk and Threat**

Samantha Paredes Scribner

## **Curriculum as a Weapon for Combating Systemic Racism: A Description of Science Unit for Elementary African American Science Learners**

Jomo Mutegi



# IUPUI Research Fund Presentations

- Faculty members received \$5,000 from Research Fund
- May 13<sup>th</sup> Research Colloquium Presentation (1 - 2 pm)
  - Natasha Flowers
  - Thu Suong Nguyen
  - Jomo Mutegi
  - Erik Tillema
  - Paula Magee

# Office of Research & Development

---

Bob Sherwood  
Associate Dean





# Research & Development Committee

- Josh Smith – Chair
- Ray Haynes
- Robin Hughes
- Tom Nelson Laird
- Gerardo Lopez
- Tom Sexton
- Mary Waldron
- Tarajeau Yazzie-Mintz
- Kyle Hartley (Student Rep)



# Internal Grant Submissions

- Proffitt Fund Endowment
  - One year research projects – Nine submissions
    - Six were funded
  - Summer Faculty Fellowships – Three submissions
    - Two were funded with one being split between two faculty members
- Creative Paths to Peace Endowment
  - Four submission
    - Two were fully funded and two partially funded
- Kempf Fund Endowment
  - No competition this year



## Sponsored Activity Comparison Year to Date (July 1-March 31)

- Bloomington

	2008-09		2009-10		2010-11	
	Number	Dollars	Number	Dollars	Number	Dollars
Submitted	127	\$12,891,105	134	\$20,324,190	111	\$22,095,098
Awards	90	\$14,293,746	91	\$8,714,816	96	\$13,392,802
Expenditures		\$9,810,074		\$8,586,254		\$7,293,133
Indirect	73	\$1,971,006	67	\$1,202,491	70	\$1,847,407
Average Indirect		13.8%		13.8%		13.8%



# Challenges

- Federal dollars are likely to decrease for education R&D
  - NSF reduction is probably going to be relatively small for the remainder of FY11
    - \$10 M – less than 1% reduction from FY10
  - IES reduction is not as clear for the remainder of FY11
    - might reach \$49 M almost 25% of its FY10 appropriation of \$200 M
- Change in Method of Calculating University Assessments
  - Difficult to allocate assessments between school and centers
  - May impact how Indirect Costs are returned to Centers and PI's



# Upcoming Federal Proposal Dates

- **US Dept of Ed**
  - IES (Research and Research Training Grants)
    - Summer (LOI – April 21<sup>st</sup>, Proposals – June 23<sup>rd</sup>)
    - Fall (LOI – July 21<sup>st</sup>, Proposals – September 22<sup>nd</sup>)
- **NSF**
  - Innovative Technology Experiences for Students and Teachers – May 13<sup>th</sup>
  - Cyberlearning: Transforming Education – July 14<sup>th</sup>
- **NIH**
  - R01 – June 5<sup>th</sup>, October 5<sup>th</sup>



INDIANA UNIVERSITY

