

# Faculty Meeting

---

School of Education

*April 16, 2010*



**INDIANA UNIVERSITY**

**SCHOOL OF EDUCATION**

# Matching The Promise

## IUB Capital Campaign

---

Sarah Baumgart

*April 16, 2010*



**INDIANA UNIVERSITY**

SCHOOL OF EDUCATION

## Campaign Summary

Timeline: July 1, 2003 – June 30, 2010

SoE Fundraising Goal → \$11,000,000

Total Raised as of 3/31/10 → \$10,922,292

% of Goal → 99.29%

# Analysis of All Campaign Gifts

Cash Gifts = \$5.4M

Estate/Deferred Gifts = \$ 5.5M

Total Raised = \$10.9M

## Gift Ranges (\$10.9M)

$< \$25,000 \rightarrow 38,000+ \text{ gifts} = \$3\text{M}$

$\geq \$25,000 \rightarrow 46 \text{ gifts} = \$7.9\text{M}$

# Gifts $\geq$ \$25,000 by Designation

	UG Scholarship	Grad Fellowship	Special Projects	Unrestricted	Total
CEP		1	3		4
C&I	4	2			6
ELPS		3	1		4
IST		3			3
LE		2			2
TE	18				18
T to T		2			2
GSO				1	1
SoE Gen'rl			2	3	5
<b>TOTAL</b>	22	13	6	4	45

# Total Private Support

Fundraising = \$10.9M

Non-governmental grants = \$17.1M

SoE Total Private Support = \$28M

# Undergraduate Enrollments

---

Don Hossler

*April 16, 2010*



**INDIANA UNIVERSITY**

SCHOOL OF EDUCATION



# Applicants to IU who have indicated an intention to major in Education

<b>As of 4/8/2010</b>	<b>Fall 2010</b>	<b>Fall 2009</b>	<b>Fall 2008</b>
<b>Applications</b>	<b>2546</b>	<b>1984</b>	<b>2057</b>
<b>Admits</b>	<b>1117</b>	<b>970</b>	<b>967</b>
<b>Indicated Intent to Matriculate</b>	<b>243</b>	<b>232</b>	<b>238</b>

# University Division Students who have indicated an intent to major in Education-- Trends

	Freshman Year	Sophomore Year
Fall 2004 matriculants	428	478
Fall 2005 matriculants	448	482
Fall 2006 matriculants	443	485
Fall 2007 matriculants	410	458
Fall 2008 matriculants	400	474
Fall 2009 matriculants	344	NA

# Current University Division Students who have indicated an intent to major in Education- Areas of Interest

<b>Total Elementary</b>	<b>462</b>
<b>Conditionally Admitted for fall</b>	<b>120</b>
<b>Remaining number in UD</b>	<b>342</b>

<b>Total Secondary</b>	<b>393</b>
<b>Conditionally Admitted for fall</b>	<b>40</b>
<b>Remaining number in UD</b>	<b>353</b>

<b>Total All Grades</b>	<b>66</b>
<b>Conditionally Admitted for fall</b>	<b>28</b>
<b>Remaining number in UD</b>	<b>38</b>

# Students admitted to the Teacher Education Program

Program	Fall 2007	Spring 2008	Fall 2008	Spring 2009	Fall 2009	Spring 2010
Early Childhood	15	NA	16	NA	13	NA
Elementary	81	108	74	98	59	108
TAL	48	NA	45	NA	52	NA
<b>P, K-6 (total)</b>	<b>144</b>	<b>108</b>	<b>135</b>	<b>98</b>	<b>124</b>	<b>108</b>
Foreign Languages	13	NA	11	NA	NA	NA
Health Ed, HPER	3	8	2	3	4	8
Language Arts	16	13	22	10	24	13
Mathematics Ed	13	NA	21	NA	26	NA
Science Ed	7	NA	10	NA	14	NA
Social Studies Ed	27	24	25	30	27	24
Theater, the College	2	2	1	0	1	2
CoT Secondary	0	5	1	3	2	5
CoT Secondary Spec Ed	5	7	2	4	0	7
<b>6-12 Secondary Total</b>	<b>86</b>	<b>59</b>	<b>95</b>	<b>50</b>	<b>98</b>	<b>59</b>
Music Ed, MUSIC	14	6	10	10	10	6
Physical Ed, HPER	6	10	9	10	7	10
Visual Arts	NA	21	NA	16	NA	21
World Languages	NA	NA	NA	NA	17	NA
<b>K-12 All Grades Total</b>	<b>20</b>	<b>37</b>	<b>19</b>	<b>36</b>	<b>34</b>	<b>37</b>
<b>Grand Totals</b>	<b>250</b>	<b>204</b>	<b>249</b>	<b>184</b>	<b>256</b>	<b>204</b>

# Graduate Enrollments

---

Mary McMullen

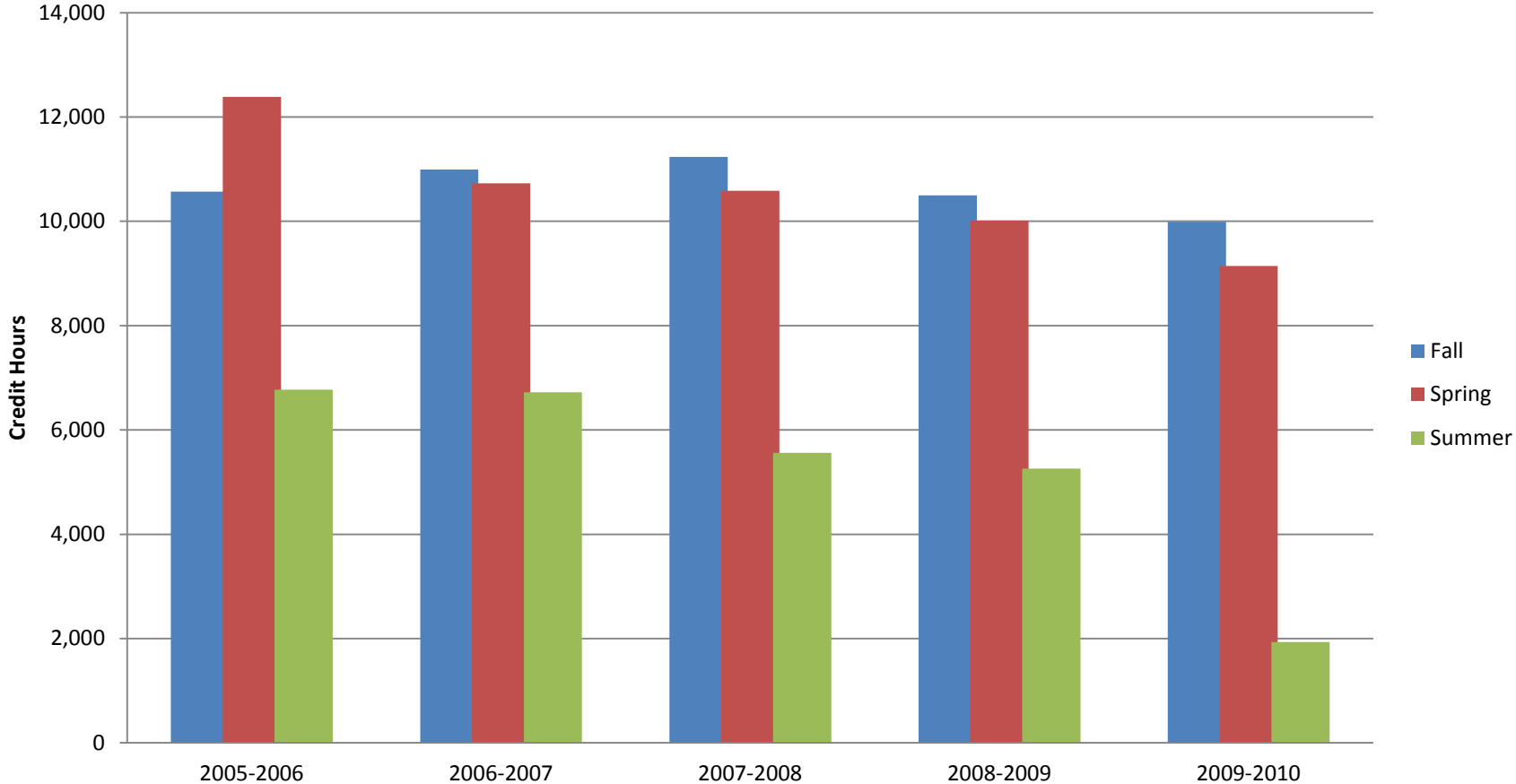
*April 16, 2010*



**INDIANA UNIVERSITY**

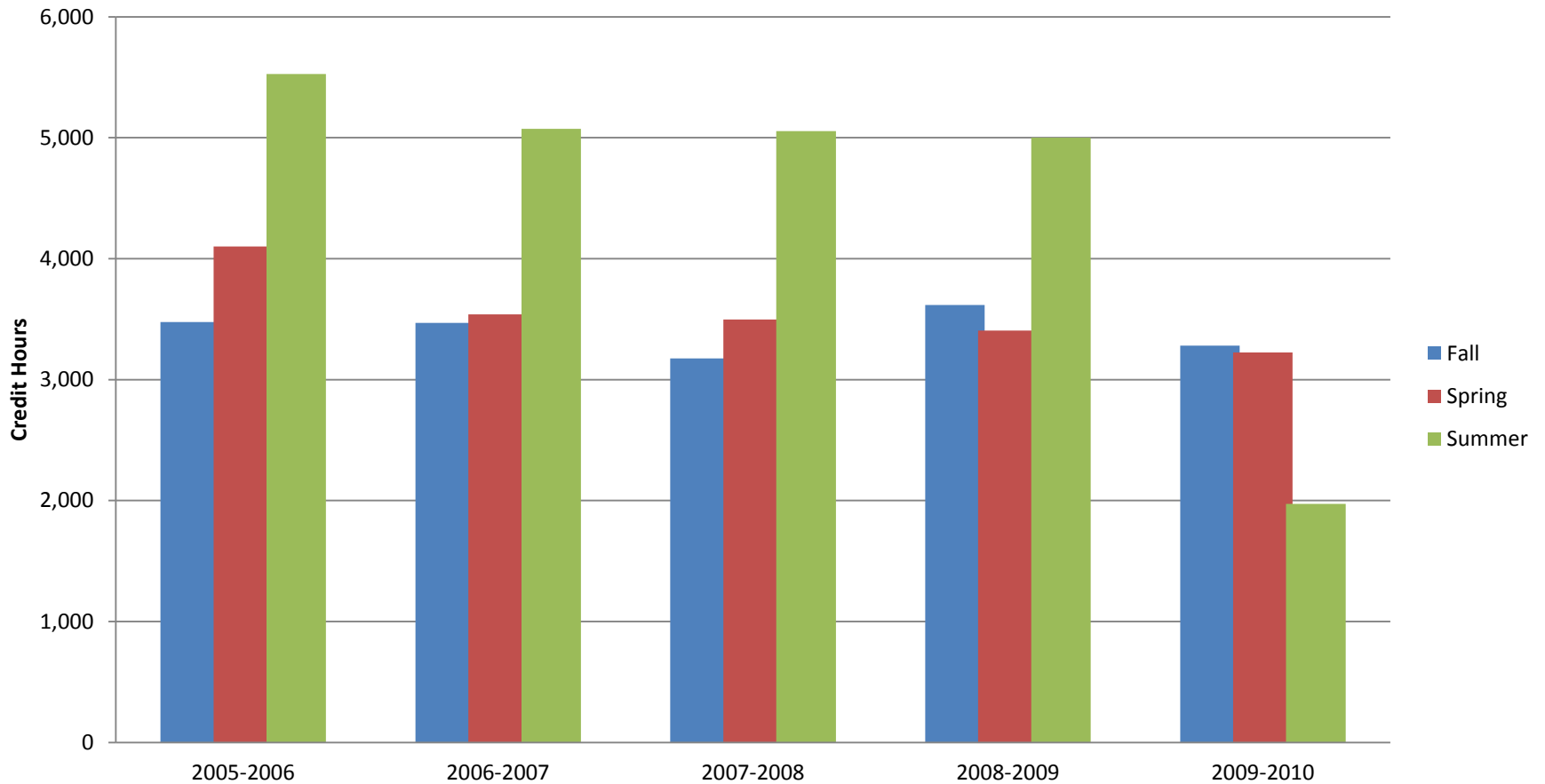
SCHOOL OF EDUCATION

### IU School of Education - Bloomington Graduate Credit Hours by Academic Year\*



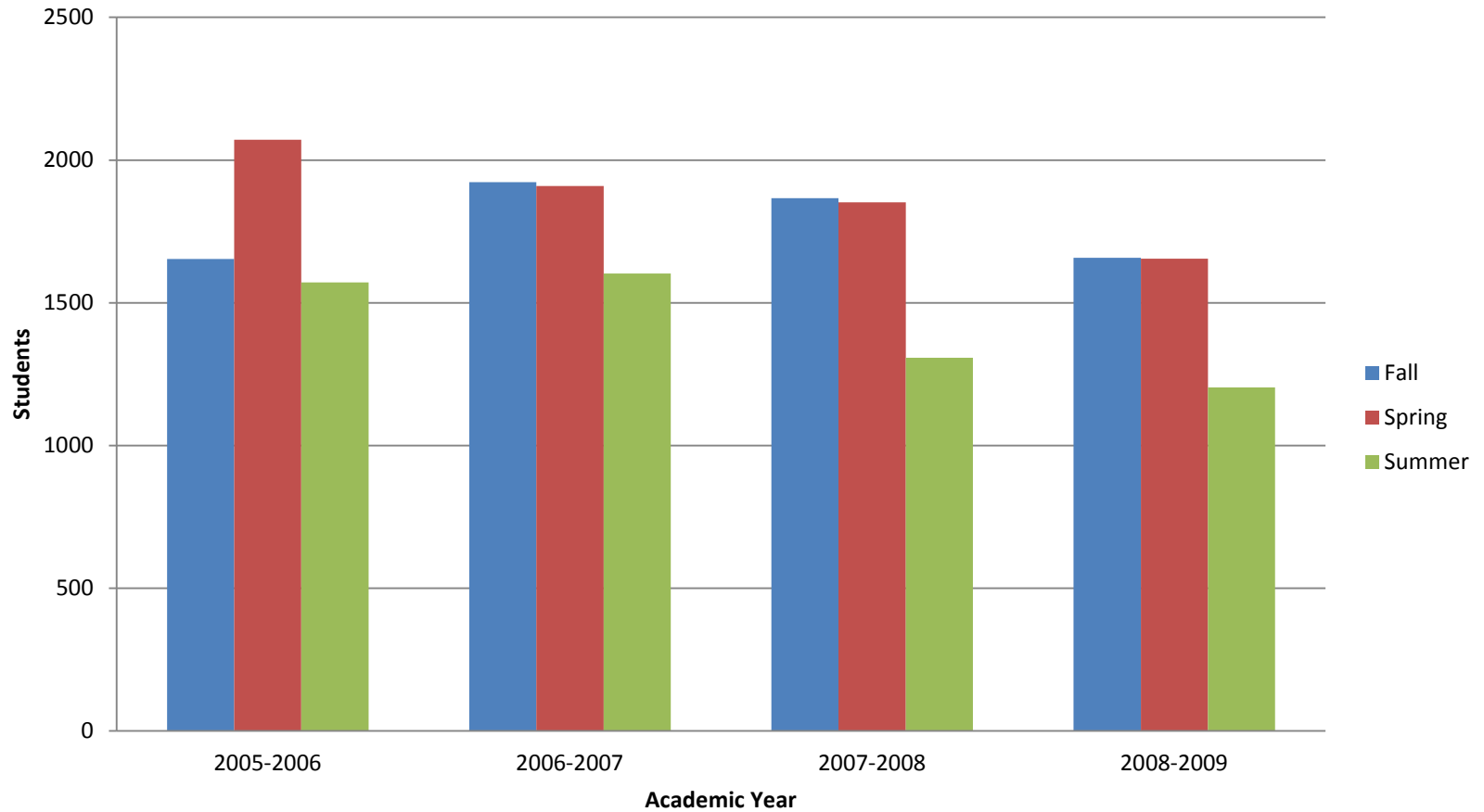
\*Chart shows credit hour totals for students who are enrolled in courses starting with EDUC at the 500 or higher level. AY 2009-2010 in progress.

## IU School of Education - Indianapolis Graduate Credit Hours by Course Level\*



\*Chart shows credit hour totals for students who are enrolled in courses starting with EDUC at the 500 or higher level. AY 2009-2010 in progress.

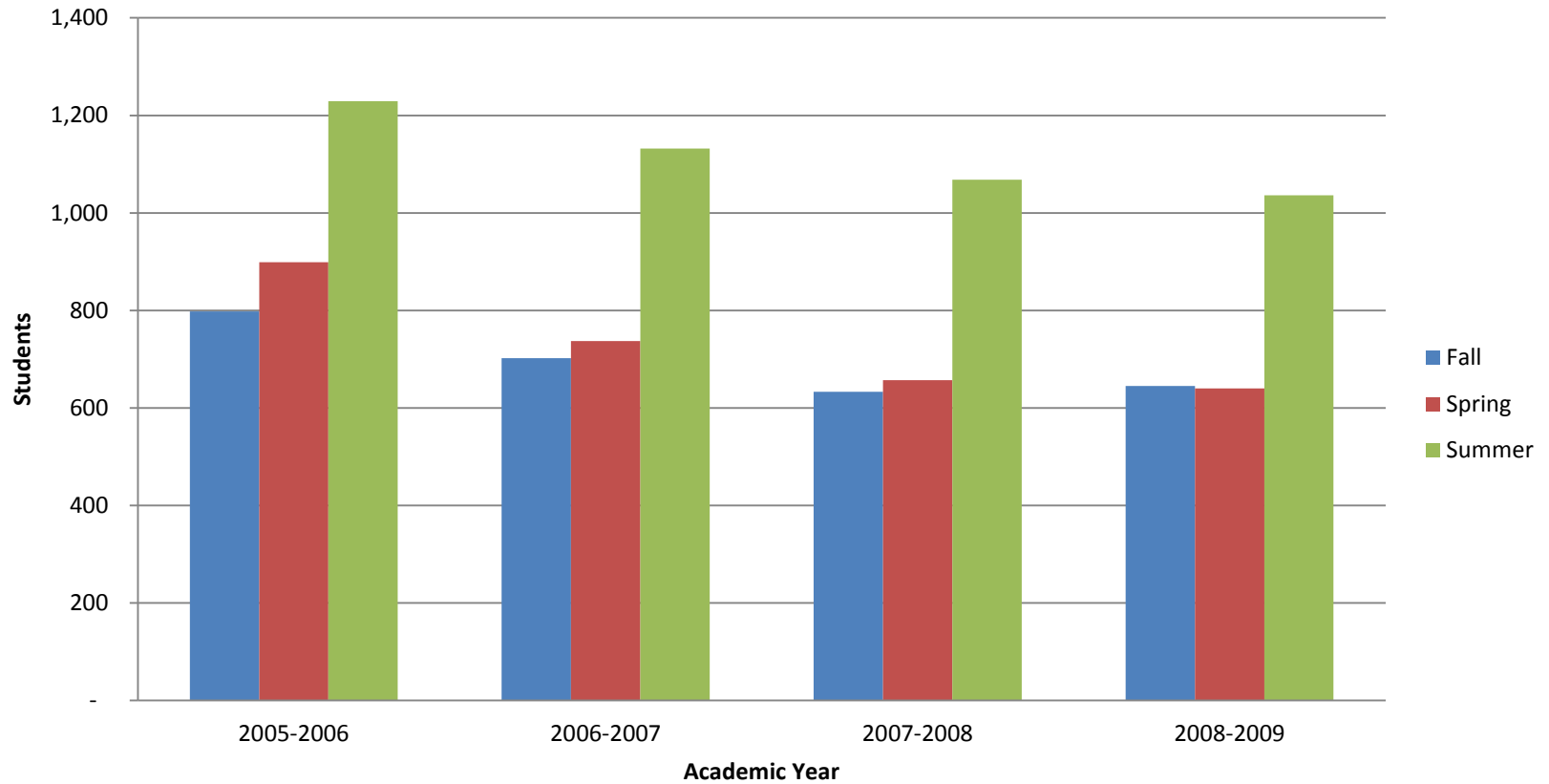
## IU School of Education - Bloomington Graduate Students by Academic Year



\*This chart shows a count of students enrolled in education programs who have registered for at least 1 credit hour during that semester.



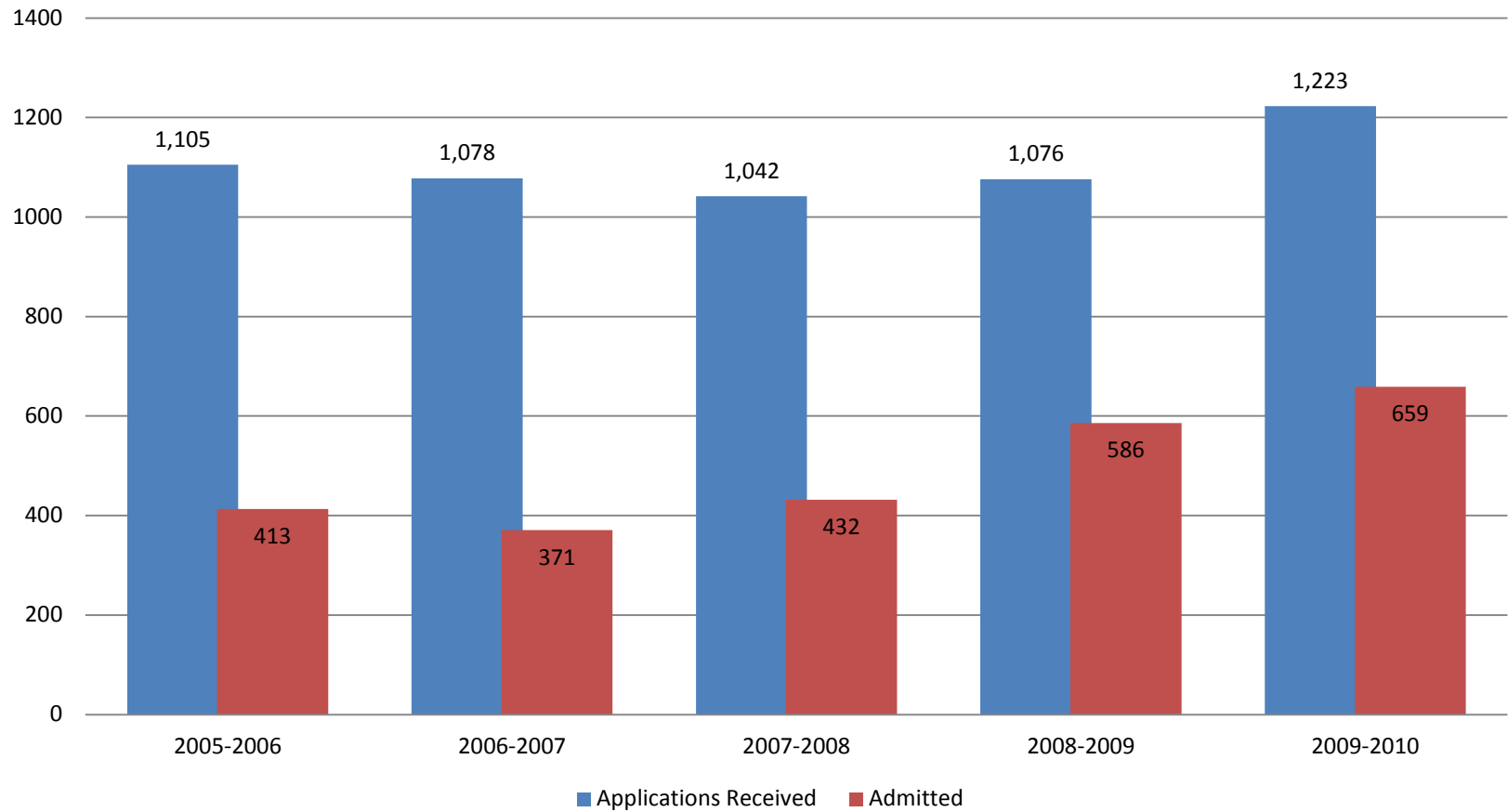
## IU School of Education - Indianapolis Graduate Students by Enrollment by Academic Year



\*This chart shows a count of students enrolled in education programs who have registered for at least 1 credit hour during that semester.

## IU School of Education - Bloomington

### Applications Received and Students Admitted



# Office of Research and Development

---

Bob Sherwood, Associate Dean

*April 16, 2010*



**INDIANA UNIVERSITY**

SCHOOL OF EDUCATION

## Sponsored Activity Comparison Year to Date (July 1- March 31)

	2009-10		2008-09		2007-08	
	Number	Dollars	Number	Dollars	Number	Dollars
Submitted	135	\$20,324,190	127	\$12,891,105	88	\$18,189,559
Awards	92	\$10,312,816	90	\$14,293,746	67	\$14,039,857
Indirect	68	\$1,518,343	73	\$1,971,006	50	\$1,617,850
Average Indirect		14.7%		13.8%		11.5%

# Internal Grant Submissions

- Proffitt Research
  - All eight were funded but with substantially reduced budgets
- Proffitt Summer Faculty Fellowships
  - Two were submitted and funded
- Kempf
  - One proposal submitted and funded
- Peace and Education
  - No submissions this year

# Upcoming Federal Proposal Dates

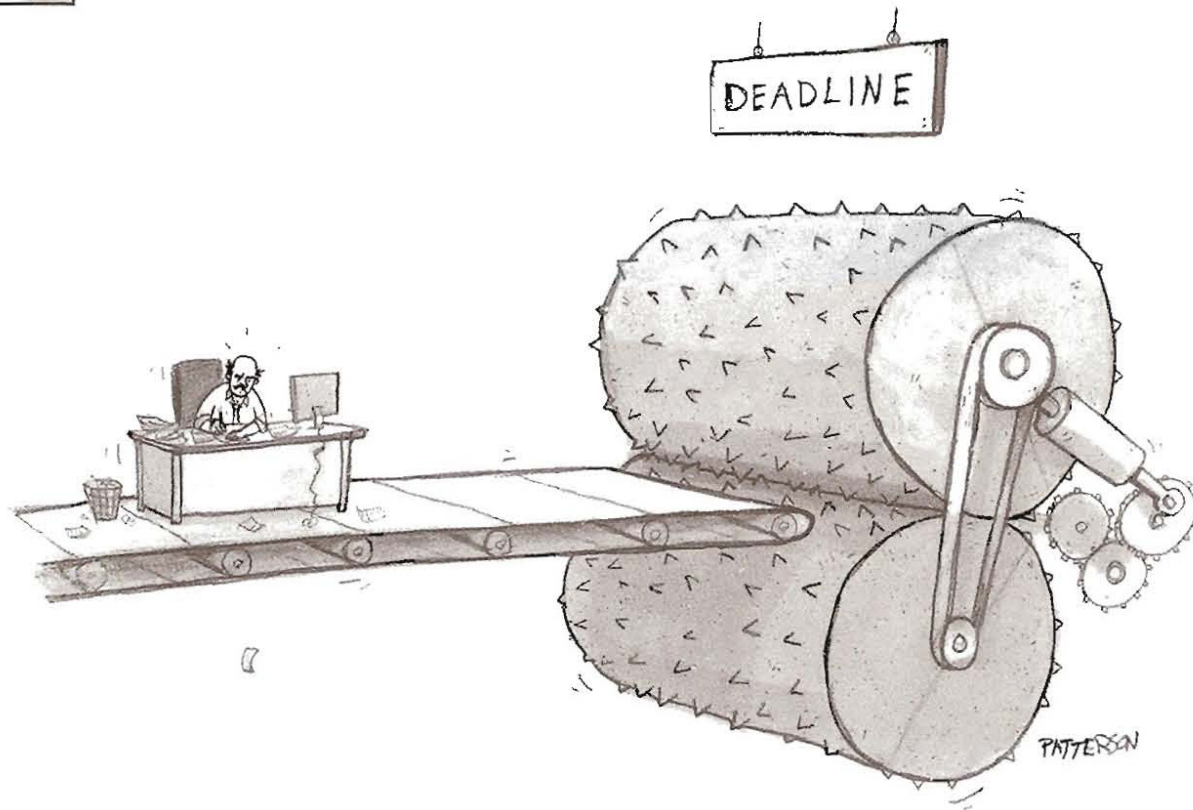
- US Dept of Ed
  - Race to the Top
    - Indiana – Middle of Scores (23<sup>rd</sup> out of 41)
    - Phase 2 Deadline is June 1st
  - Investing in Innovation
    - May 11<sup>th</sup> Deadline
  - IES (Research and Research Training Grants)
    - Summer (LOI - April 29<sup>th</sup>, Proposals - June 24<sup>th</sup>)
    - Fall (LOI - July 19<sup>th</sup>, Proposals – September 15<sup>th</sup>)

# Upcoming Federal Proposal Dates (cont.)

- NSF
  - Fostering Interdisciplinary Research on Education (FIRE) – May 20<sup>th</sup>
  - Math and Science Partnerships – July 8<sup>th</sup>
- NIH
  - R01 – June 5th



# THE NEW YORKER





# Core Campus Meeting

## IUPUI

---

Executive Associate Dean Pat Rogan

*April 16, 2010*



**INDIANA UNIVERSITY**

SCHOOL OF EDUCATION

## Credit Hours

- Undergraduate credit hours for spring 2010 are up 993 or **12%** from spring 09 census.
- Graduate credit hours for spring 2010 are down 63 or **-2%** from spring 09 census.

# Funding

- Spring Fiscal Analysis – Ending in the black.
- Prof. Development – Approx. \$200,000 in revenues
- 2010-2011 General Fund Budget: \$8,104,888 (includes -6.6% reduction in operating appropriations)

## Funding (cont)

- 10% increase in Student fees + -0.2% reduction in Assessments = Overall budget increase of 10.2%
- New budget includes \$111,531 in mandatory budget reserve.
- Budgeted 10% increase in part-time adjunct salary
- Included 2 new faculty positions

# Budget Forecast

---

Jack Cummings

*April 16, 2010*

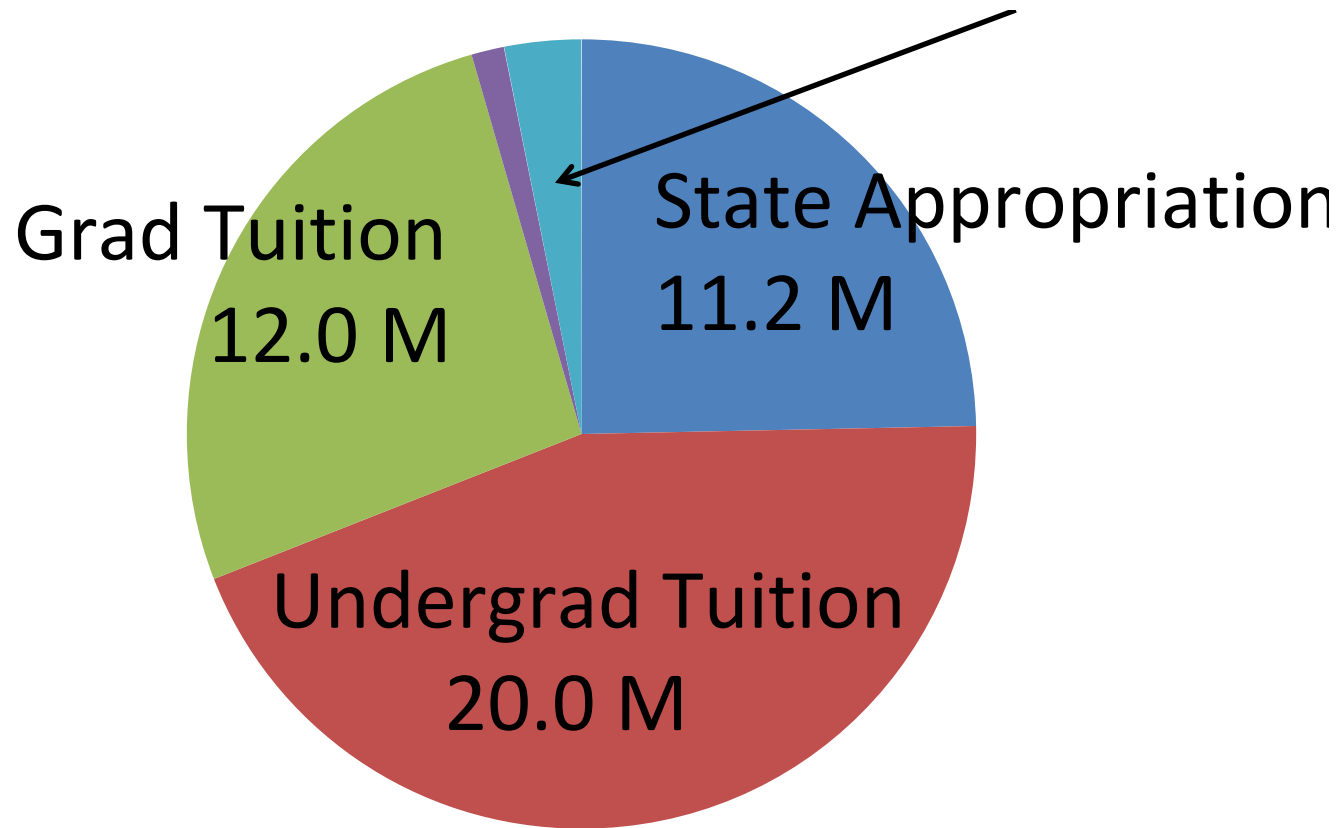


**INDIANA UNIVERSITY**

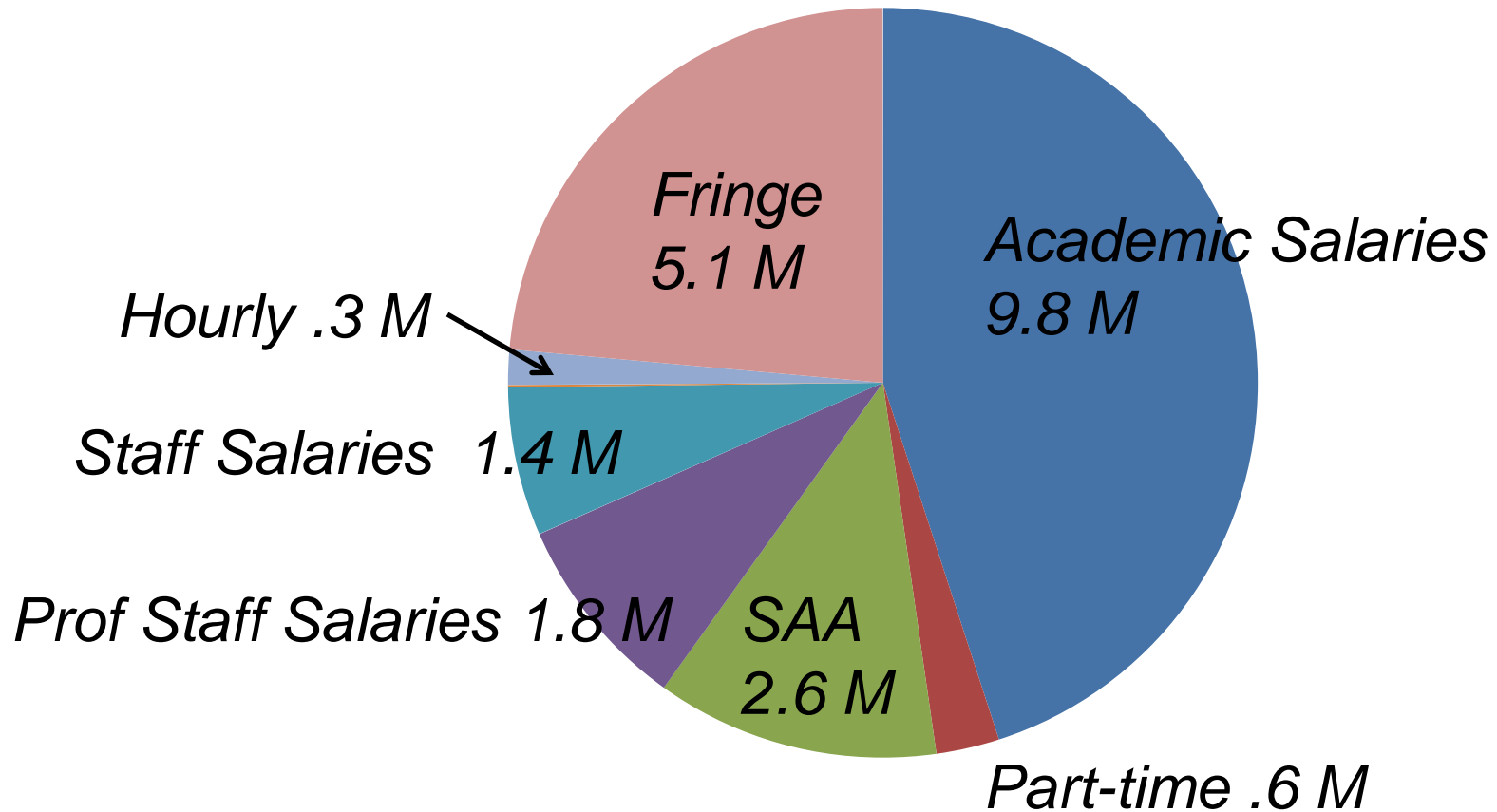
SCHOOL OF EDUCATION

# FY09 Actual Income

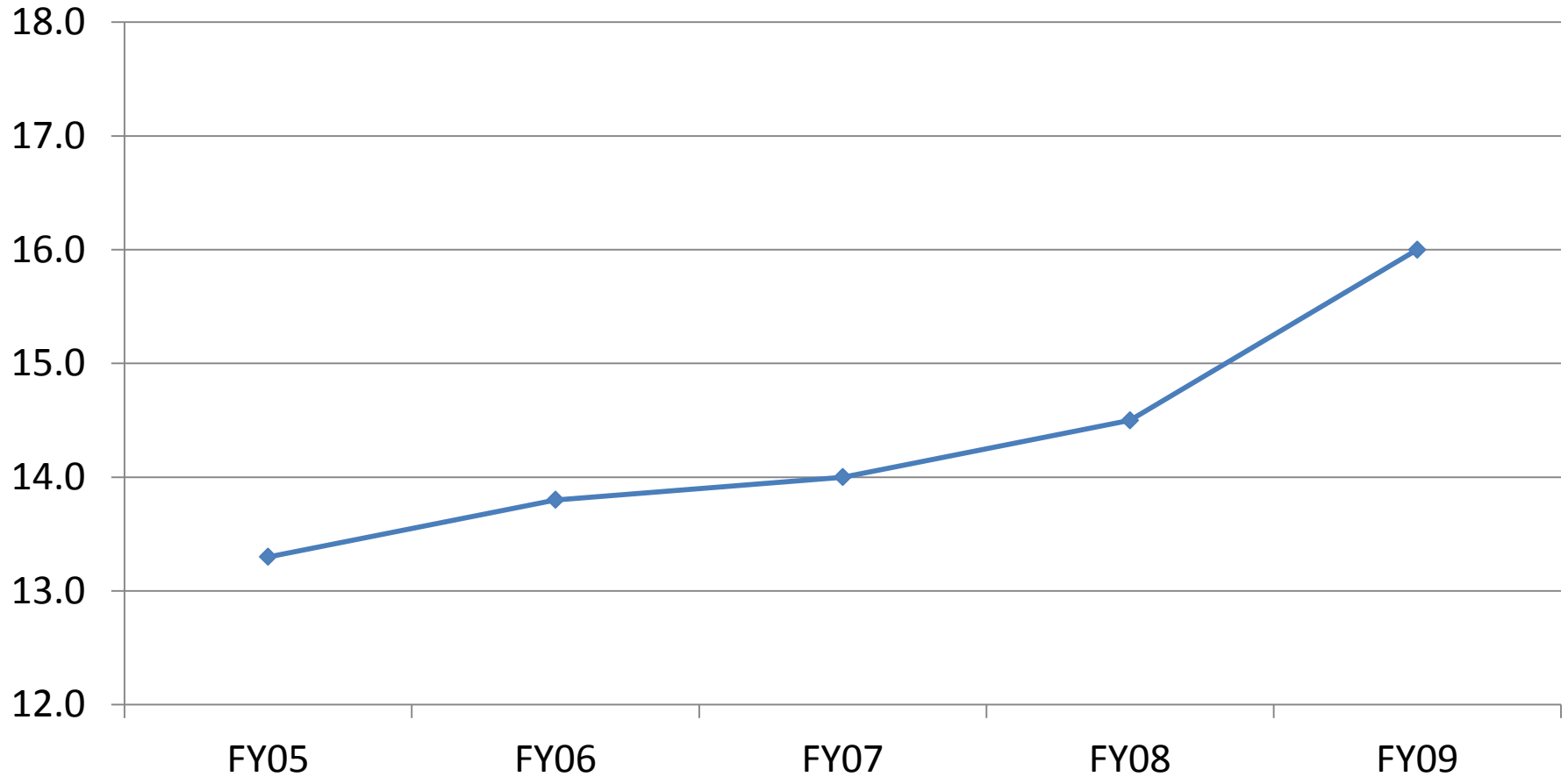
Indirect 1.4 M



# FY09 Expenditures

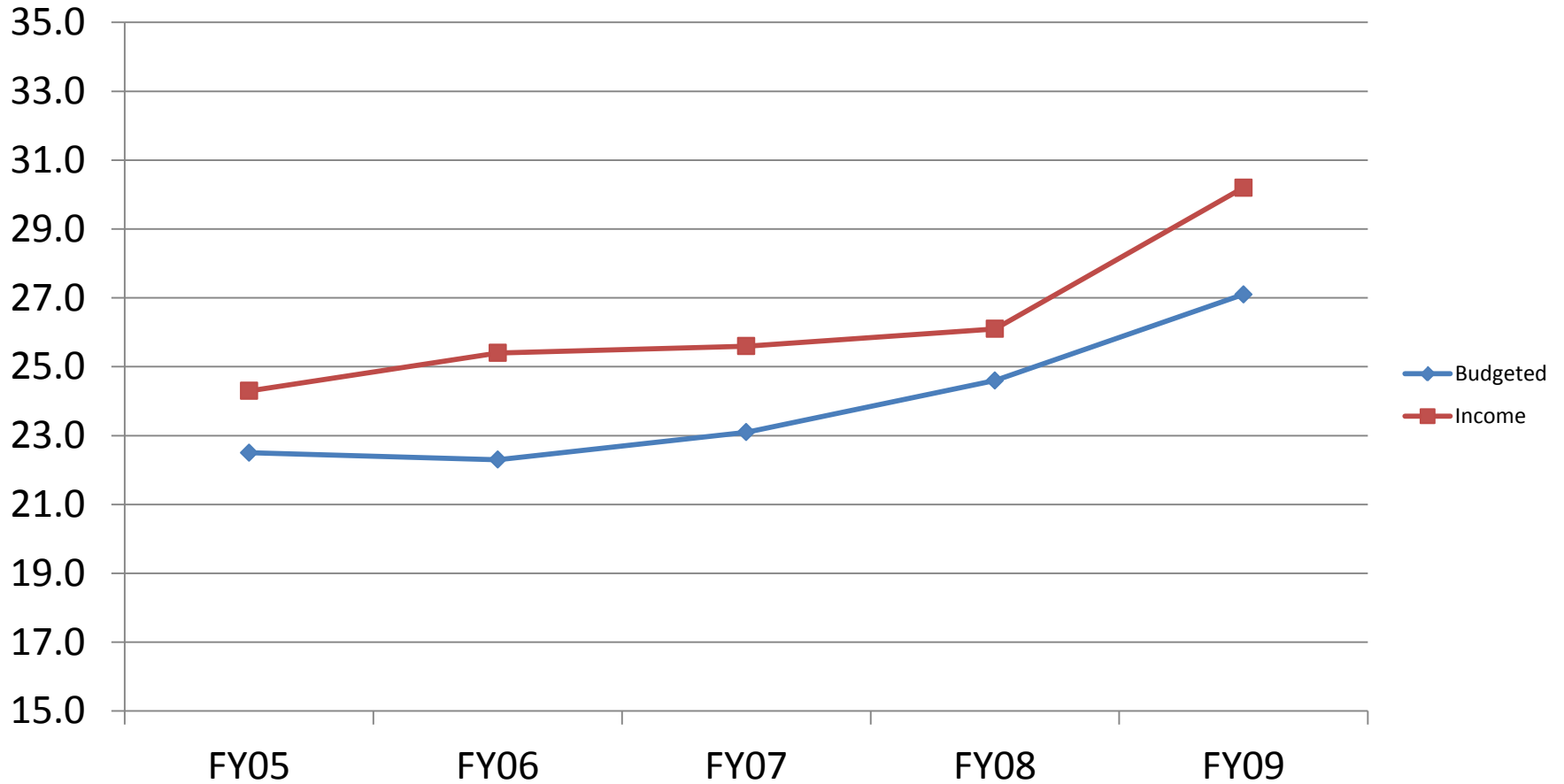


# Assessments (millions)

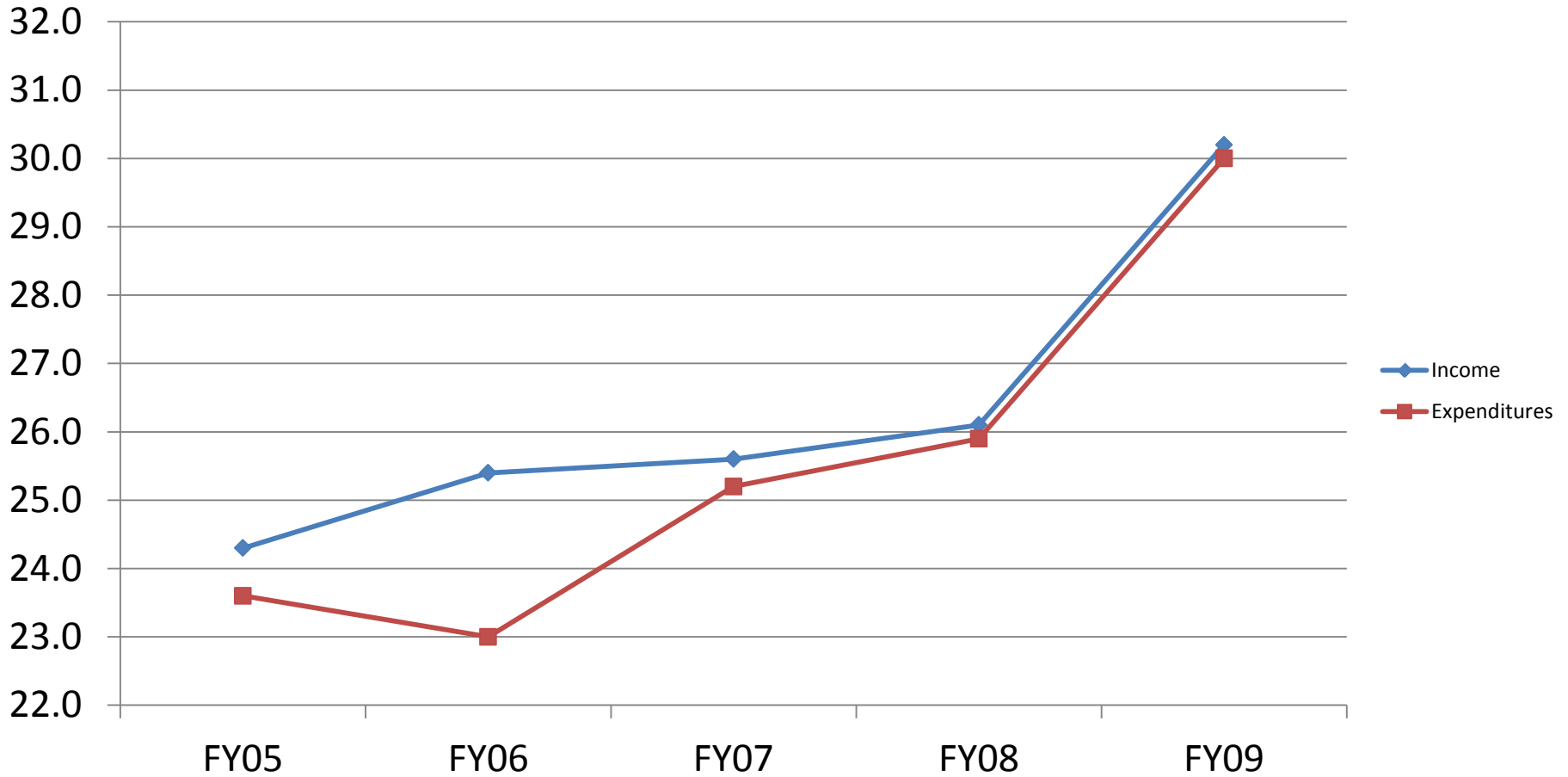




## Budgeted v. Actual Income (millions)



## Income v. Expenditures (millions)



## Undergraduate

\$241.10 / credit hour

\$789.80 / credit hour (*out-of-state*)

## Graduate

\$329.87 / credit hour

\$960.69 / credit hour (*out of state*)