

# BIOLOGY

Summer 2001/Vol. 13

## Indiana University Alumni Newsletter

College of Arts & Sciences Alumni Association

### Biology faculty earn top national honors

**D**istinguished Professor and Chair **Jeffrey Palmer** was elected to the National Academy of Sciences last year. "Palmer is considered by many to be the world leader in evolutionary genomics and has made landmark discoveries in areas as diverse as plant phylogeny and intron evolution," says Loren Rieseberg, who is the Class of 1954 Endowed Professor of Biology.

Membership to the National Academy is one of the highest honors a U.S. scientist can achieve. The academy and its members advise the federal government on science and technology matters.

Rieseberg is not the only Class Professor in the department. Palmer received the Class of 1955 Endowed Professorship last year. This five-year award is designated for faculty in the College of Arts and Sciences.

Professor of Biology **Rudolf "Rudy"**

**Raff**, who directs the Indiana Molecular Biology Institute, was elected to the American Academy of Arts and Sciences. The academy is one of the most prestigious academic organizations in the world. His research spans biological disciplines from paleontology and evolutionary biology to molecular phylogeny and developmental biology. Raff is

considered to be the leading world figure in evolutionary developmental biology. His book *The Shape of Life* is one of the key works on the field of evolutionary biology.

Raff joins two other departmental faculty who are also American Academy members. Palmer and Distinguished Professor of Biology Thomas Kaufman were elected to the academy in 1999. Kaufman holds the distinction of being the first in the state to be named a Howard Hughes Medical Institute

Investigator, back in 1990. His research focuses on genetic mutations in *Drosophila melanogaster*.

Raff, Palmer, and Kaufman are not the only faculty in the department's history to have been elected



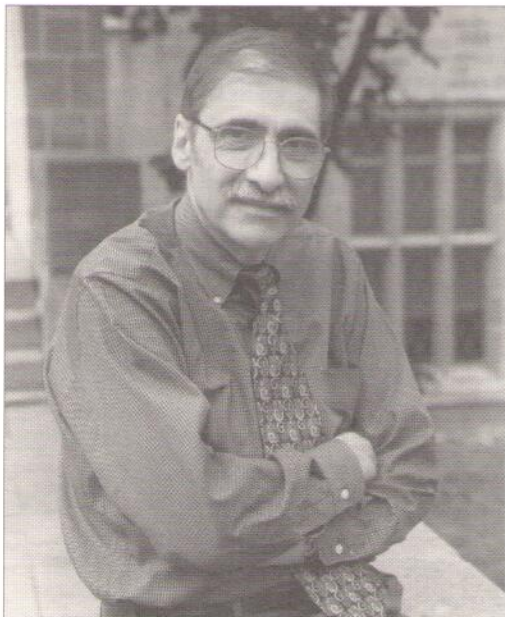
Annalese Poorman

Chair and Distinguished Professor Jeff Palmer works in his lab.

to the American Academy. They were preceded by Distinguished Professor Emeritus Frank Putnam, who remains an active presence in the department, and by four deceased faculty members, including Nobel laureate Hermann Muller, Robert W. Briggs, Ralph Cleland, and Tracy W. Sonneborn.

Putnam and three other emeritus professors, Charles Heiser, John Preer, and Anthony San Pietro, are members of the National Academy of Sciences. Six deceased

(continued on page 12)



Mindy Perrine

IU's Professor Rudy Raff is considered the leading world figure in evolutionary developmental biology.

### Inside

Biology major earns Rhodes Scholarship .....	2
New Holland fellowship and lecture .....	3
Jordan Hall to get vivarium .....	4
In memoriam: Leland McClung .....	5
Alumni notebook .....	6

# Biology major earns Rhodes Scholarship

**W**hen Raju Raval graduated in May, he had an amazing number of accomplishments to his credit. Very few students graduate with four majors, but Raval did, completing requirements in biochemistry, Spanish, and religious studies, in addition to his biology major.

This talented young man came to IU through the Herman B Wells Scholars Program, which provides four-year awards to top-notch students who excel academically and demonstrate leadership potential. Raval was also named an Indiana University Science, Technology, and Research Scholar. The IU STARS Program, as it is called, was founded by former biology faculty member Marc Muskavitch, who now chairs the biology department at Boston College. This program enabled Raval to conduct laboratory research in the Department of Biology, under the tutelage of Professor Milton Taylor over the past four years.

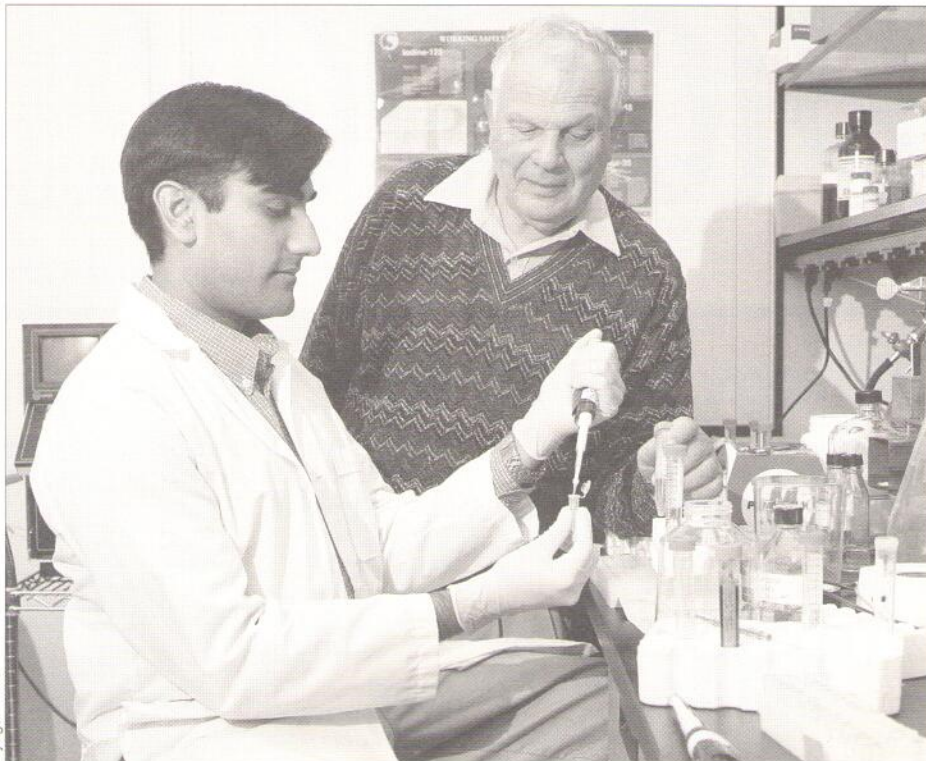
Raval's mother, Chandrika, who was a physician, died of breast cancer several years ago. Her struggle convinced him to pursue a career in medicine, cancer research, and public health policy.

It was in Taylor's laboratory that Raval began studying the diagnostics and progression of breast cancer micro-metastases. "Not only did I have a great learning opportunity working in Dr. Taylor's Lab, I also had the chance to develop close ties and learn from the personal experiences of the others there," Raval noted. "In addition, the biology courses at IU were excellent, and if you wanted to, you could get to know your professors well and receive help directly."

In his junior year at IU, Raval received the Harry S Truman Scholarship, another merit-based award granted to students interested in public service careers. His academic achievements also earned him the Payne Scholarship, which is the oldest undergraduate award in biology.

In December of last year, Raval received a prestigious Rhodes Scholarship. He is the 13th student in IU's history to be named as such. This award will enable Raval to study at the University of Oxford, where he will pursue a doctorate in molecular oncology.

"I hope in some small way that winning the Rhodes Scholarship ... pays back a little bit for all the time, effort, and energy that the wonderful people at this university have [put forth] to help me achieve my goals and dreams," Raval commented at an IU



Tyagan Miller

Raju Raval has worked in Professor Milton Taylor's laboratory over the past four years.

trustees meeting that he attended in January. It was there that he acknowledged Taylor and expressed gratitude for the opportunity to work in his laboratory.

This summer, Raval is working at the National Cancer Institute, with Dr. Eric Huang, in the Laboratory of Human Carcinogenesis. Raval says, "The lab's focus is on determining the pathways by which hypoxia (low oxygen tension) affects angiogenesis and thus tumor progression."

Once he earns his doctorate at Oxford, Raval will return from England to attend medical school, taking one more step in his goal to pursue a career fighting the disease that took his mother's life. It seems fitting that he earned biology's Rex Grossman Award in April. This scholarship,

created by R. Daniel Grossman, BA'73, MD'76, is awarded to students who demonstrate the capacity to become caring, competent physicians. There's no doubt that Raval will live up to these expectations.

Those of us in biology expect even greater accomplishments from Raval in the years to come. We wish him every success.

## Biology Alumni Newsletter

This newsletter is published annually by the Indiana University Alumni Association, in cooperation with the Department of Biology and the College of Arts and Sciences Alumni Association, to encourage alumni interest in and support for Indiana University. For membership or activities information, call (800) 824-3044, or e-mail [ualumni@indiana.edu](mailto:ualumni@indiana.edu).

### Department of Biology

Chair ..... Jeffrey D. Palmer  
 Editor ..... Kathy E. Wys

### College of Arts & Sciences

Dean ..... Kumble R. Subbaswamy  
 Executive Director of Development  
 & Alumni Programs ..... Susan Dunn Green

### IU Alumni Association

President/CEO ..... Jerry F. Tardy  
 Assistant Alumni Director ..... Nicki Bland  
 Editor for Constituent Publications ..... Carol Edge



# Department and university remember Jim Holland with new fellowship and lecture series

Jim Holland was a member of biology's faculty for more than 30 years. During that time, he tirelessly worked to ensure the success of our students. Holland must have written hundreds, if not thousands, of letters of recommendation to graduate and professional schools on behalf of his students. He truly believed that advanced training was crucial to their success.

When Holland died in 1998, the department thought it only fitting to remember him with an award to help the students whom he loved so much. Professor Tom Donahue recalled that the Research and University Graduate School had created a one-time-only minority fellowship in Holland's name, shortly before his death. The recipient of that award, **Liana Bulmer**, is currently a graduate student in the Department of Biology.

Donahue proposed turning this one-time award into an endowed fellowship. Thus, the James Holland Graduate Fellowship in Biology was established in perpetuity. The Holland Fellowship supports the training of a first-year PhD student from groups under-represented in the life sciences. An endowment of \$600,000 will be required to generate the necessary interest for an annual award. RUGS is committed to helping biology fund the first few years of the fellowship. **Antino Allen** will be the next recipient of the Holland Fellowship.

The university also wished to recognize Holland's contribution to this institution and did so by establishing the James P. Holland Memorial Lecture Series. The lecture is sponsored by the Office of the Vice President for Student Development and Diversity, the Office of Multicultural Affairs, and the Department of Biology.

"Like all great teachers, Jim's influence will be felt by the students of his students and their students. The Jim Holland Lecture ensures that the campus community will remember him in perpetuity as well," said then-Vice President for Academic Affairs and Chancellor of the Bloomington campus Kenneth Gros Louis, who stepped down from the helm of the Bloomington campus in May after 21 years of eminent leadership.

The first Holland Memorial Lecture was held last year on Oct. 16. It was there that Holland's widow, Constance, received

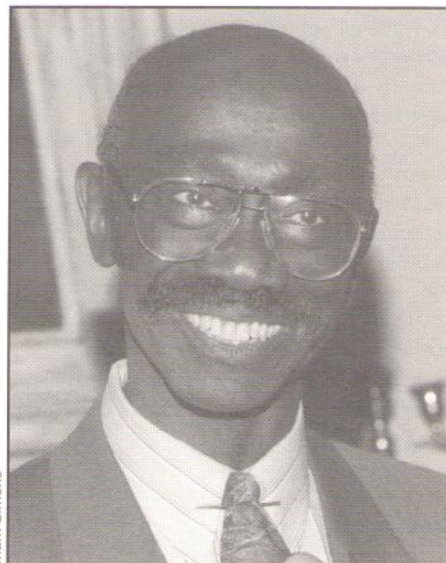
the Chancellor's Medallion, which had been awarded to her husband in November of 1997 at a surprise retirement dinner held in his honor. When presenting this award to James Holland for his "transcendent service to the Bloomington campus," Gros Louis noted that the actual medallion would be presented once a design had been created and a medal struck.

Holland's friend and former classmate Homer A. Neal gave the inaugural memorial lecture, titled "Science in the New Millennium." Neal is the Samuel A. Goudsmit Professor of Physics and the director of the UM-ATLAS Collaboratory Project at the University of Michigan.

In his opening remarks, Neal commented on his friendship with Holland, stating: "Jim Holland was one of my closest friends. We shared many common experiences and dreams . . . . We both attended school here at IU Bloomington at a time when the role of minority students was quite tenuous. We shared dreams of a bright future, but we were keenly aware of the difficult times that our families were having, the sacrifices they were making just to give us a chance, and how easily our dreams could be dashed . . . ." He also took special care to welcome the students in the audience, recalling how Holland's life had always been centered around his students.

Even though Jim Holland will no longer walk our halls, teach in our classrooms, or conduct research in our laboratories, he will still be remembered through the four programs that bear his name. In addition to the graduate fellowship and memorial lecture series, there is the Jim Holland Summer Enrichment Program that is designed to interest and encourage Indiana minority high school students in science by bringing them to campus for classes and hands-on laboratory experience. Holland led this project from its inception, and it was renamed in his honor last year. Finally, there is the collegewide Holland Teaching Award, created in 1997, to recognize arts and sciences faculty who share Holland's passion for teaching. These are truly fitting tributes to a remarkable man.

*Those wishing to support the James P. Holland Graduate Fellowship in Biology may do so by contacting the Indiana University Foundation.*



Mark Simons

**"Jim, as you know, led a life that was based around his students. He put an enormous amount of energy into preparing his lectures, to advising his students, and doing whatever was necessary to make sure students succeeded."**

**— Professor Homer A. Neal,  
University of Michigan**

## Join us for the second Holland Lecture

Harvard Professor S. Allen Counter, PhD, DMSc, will present the second James P. Holland Memorial Lecture this fall. A neurophysiologist on staff at Massachusetts General Hospital and Harvard Medical School, Counter also directs the Harvard Foundation, which was established to promote intercultural relations.

His research interests include the neurobiological effects of lead and mercury exposure. This research led him to the ceramics-glazing and gold-mining areas of Ecuador, where villagers, especially the children there, suffer from exposure to high levels of the lead and mercury used in these industries.

In an effort to advance the scientific literacy of children, Counter has traveled throughout the country giving talks to elementary, middle school, and high school audiences. He has also appeared on local and national children's science shows, such as "3-2-1 Contact."

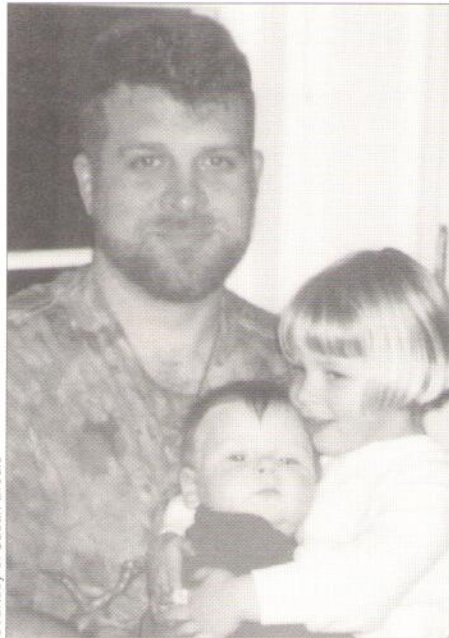
*(continued on page 5)*

# Brodie brings vivarium to biology this fall

Edmund “Butch” Brodie III received a National Science Foundation Career Award in 1996 while still on the faculty at the University of Kentucky. A portion of the grant, which recognizes research and education innovation, was allocated to construct what Brodie envisioned to be a small vivarium. This structure would illustrate various aspects of the evolution of behavior, as well as highlight the evolutionary convergence of the color patterns and behavior of reptiles and amphibians.

The size of the vivarium has grown, however, thanks to the support of biology chair Jeff Palmer, who, as Brodie says, “wanted to do this right and really create a showcase in the [Jordan Hall] atrium. The bulk of the funding has actually come from the department ... [which] has been more than generous ...”

The structure is scheduled for completion during the fall semester, at which time Brodie will begin to stock it with plants and animals. An Old World tropical environment will cover one side of the vivarium and will feature Africa and Asia. New World tropics, showcasing Central and South America, will appear on the other



Courtesy of Susan Brodie

**Butch Brodie holds daughter Eliza, 3 1/2, and son Fisher, 1.**

side. The two “worlds” will be separated by a thin wall with rivulets running down piles of rocks at both sides. These rivulets will form small pools from which the frogs and lizards can drink.

Each section will contain snakes, native frogs, and lizards, which serve to highlight the convergence of form and behavior in rainforests around the world. “Converge” refers to independent origins of the same features in unrelated taxa,” Brodie says. “For example, we’ll have arrow poison frogs from Central America and mantellid frogs from Madagascar, each of which has bright color patterns and exhibits parental care. We’ll do the same with rainforest plants from the New and Old World to show how similar features have evolved independently.” All of the animals will come from captive breeding

projects. Brodie estimates that it will take another year to get all of the animals needed to inhabit the vivarium.

The structure will contain radiant heat panels in the ceiling, louvered vents in the walls, and circulation fans. These will create thermal gradients to enable the animals to select their preferred temperatures. An automated sprinkler system installed with nozzles in various places will provide “rain and mist” at regular intervals.

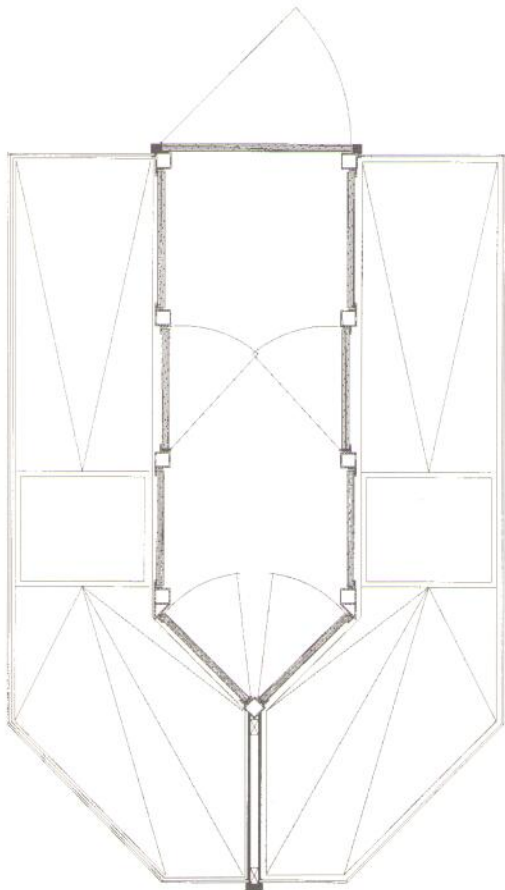
Brodie, who joined the department in 1997, is interested in how interactions among individuals and species lead to evolutionary diversity. He’s involved with two major projects now. One is a collaboration with his father, Edmund Brodie Jr., who is on the faculty at Utah State University. They study the relationship between toxic newts and garter snakes.

Just one of these toxic newts contains enough poison to kill 20-25 people. Yet there is one species of garter snake that preys on the newts. These snakes are the only predators known to be resistant to the newt’s powerful nerve toxin. The two Brodies study this predator/prey “arms race” to determine what led to this extreme adaptation. They are also trying to determine what genetic and physiological changes led to this resistance in the snakes.

Brodie also examines the interactions between individuals, parents, and offspring. When one individual influences another, such as a mother caring for and provisioning her babies, there is an interaction that allows genes in the mom to influence the traits in her babies. Brodie does mathematical modeling to learn how these indirect genetic effects influence the evolution of behavior.

He also works with one of his students, **Aneil Agrawal**, studying burrower bug mothers who provide their offspring with mint seeds. Without this parental care the babies perish. Brodie and Agrawal performed cross-fostering experiments to investigate how genetics influence parental care behavior. They also examined how differences in parental care influence offspring characteristics. The results of their research appeared in a June issue of *Science*.

When he isn’t in the lab or settling details of the vivarium, Brodie can be found at home with his wife, Susan. She is a high school English teacher and budding artist who has taken a leave to spend more time with their two children, Eliza and Fisher. They share their home with Mingus and Maisie, two huge Old English mastiffs.



**Plan view of the 8 ft. by 11 ft. vivarium**

**The Old and New World exhibits meet back-to-back at the center front.**

**Drawing by Molly O’Donnell, University Architect’s Office**

## In memoriam: L.S. McClung, 1910-2000

Professor Emeritus Leland "Mac" McClung died on May 9, 2000. He was 89 and is survived by his wife, Ruth. McClung did his undergraduate work at the University of Texas and earned a doctorate from the University of Wisconsin in 1934. His research focused on *Clostridia*, and he became involved with the microbiology of soil, wounds, and foods.

After graduation, McClung worked in Chicago at the American Can Co., where his experience with the microbiology of food was put to good use. In the 1930s, there was great concern about heating food to a high enough temperature to kill spores without destroying the flavor and structure of the item being canned.

He earned a prestigious Guggenheim Fellowship for 1939-40. This enabled him to study medical bacteriology at Harvard University.

McClung became a member of the IU faculty in 1940. He created the university's bacteriology program, now known as microbiology, with the support of then-President Herman B Wells. McClung administered the bacteriology program for 25 years.

The Italian physician, Salvadore Luria, was the first faculty member McClung hired. The research Luria began in this department eventually earned him a Nobel Prize. One of Luria's graduate students at IU, James Watson, also earned a Nobel Prize.

For many years, McClung ran National Science Foundation summer institutes that trained high school biology teachers. These programs were so successful that NSF asked him to serve as a program consultant in Taiwan and India.

McClung was internationally known for his research with anaerobic bacteria. In 1980, the American Society of Microbiology awarded him an honorary membership in recognition of his many achievements. This recognition has been given to fewer than 120 people in the society's 100-year history.

The Indiana branch of the ASM invited Professor Emeritus Eugene Weinberg to speak of McClung's many accomplishments at their annual spring meeting. They have named one of their student research awards after McClung in recognition of his efforts to promote microbiology education and research.

Cornelius Sterling, who was the first undergraduate to earn a bacteriology degree, established the L.S. McClung Scholarship several years ago to honor his former teacher.

"Mac had a great capacity to relate to his students," recalls Sterling. "He made his lectures and experiments useful and interesting [thanks to] his knowledge and professional experience. We will miss him."

McClung was so touched by Sterling's thoughtfulness that he in turn created the Microbiology Undergraduate Summer

Research Award. This scholarship enables students to spend a summer engaged in independent laboratory research under the guidance of a faculty mentor.

McClung took an active interest in these scholarships. He reviewed student applications and made recommendations on potential candidates to the Scholarships Committee. McClung routinely invited recipients to his office to talk about their career plans, and he often purchased student memberships for them in the American Society of Microbiology.

The department deeply feels the loss of this dedicated scientist and devoted teacher.



IU Photographic Services

**McClung created IU's bacteriology program with the support of then-President Herman B Wells.**

---

*Those wishing to make memorial contributions, may do so to the L.S. McClung Scholarship or the Microbiology Undergraduate Summer Research Award, in care of the Indiana University Foundation, or to the Friends of ASM Archives Account, in care of the American Society for Microbiology Foundation.*

## Holland Lecture

*(continued from page 3)*

Counter spearheaded the efforts to have Matthew Henson, the little-known black explorer who was part of Robert Peary's 1909 polar expedition, moved from a modest cemetery in the Bronx to the Arlington National Cemetery, where he was laid to rest with full honors. Counter's book

*North Pole Legacy: Black, White, and Eskimo* describes his relationship with the Eskimo ancestors of Peary and Henson, while shedding new light on Henson's contributions to the 1909 expedition.

In addition to his television work with children, Counter has produced several film documentaries, including two on the Ecuadorian children suffering from lead and mercury poisoning, one on Henson, and

two on African descendants living in the rainforests of Suriname, South America, and Ecuador.

Counter's presentation is *tentatively scheduled* for Oct. 8, 2001, at 4 p.m. in Jordan Hall A100 in Bloomington. A reception will follow in the Jordan Hall Atrium. To confirm details of the lecture, call (812) 855-9632 or (812)855-6195, or e-mail [kwys@indiana.edu](mailto:kwys@indiana.edu).

# Alumni notebook

## Before 1960

**Gilmore, Miriam**

**Wedeking, BA'41** Zoology. Hospice volunteer, Atherton, Calif. Two grandchildren.

**Lansing-Penman, Dorothy,**

**BA'44** Zoology, MD'47 Medicine. Active member, College of Physicians and Obstetrical Society of Philadelphia and History of Medicine. Recipient, Otis R. Bowen Award '94 and IU Distinguished Service Award '93. Spouse, W. Robert Penman, M.D.

**Slipp, Samuel, BS'49**

Anatomy & Physiology, MD'50 Medicine. Clinical professor, psychiatry, New York University. Proud grandparent of Jacob Dylan, born October 2000.

**Boruff, John, BA'53**

Biology, MS'65 Health & Safety. Member, Concert Band and Scottish Rite Orchestra in Brazil, Ind. Member, Marching Hundred Alumni Band. Hospital Corpsman during Korean Conflict, U.S. Coast Guard. Spouse, Martha, BS'53 Education.

**Cobb, Mary Lane, BA'50**

Zoology. Retired from medical practice after 35 years. Chairperson, Westchester Region NAACP ACT-SO. Spouse, James, retired machine designer. Children, Lane, Pamela, and Keith. (Woman's Medical College, Pa., MD'54.)

**Fries, George, BA'53**

Biology, DDS'57 Dentistry. Completing 44 years of dental practice in 2001. Celebrated 46 years of marriage, December 2000.

**Gerdson, Robert, BA'50**

Zoology. School psychologist turned paleontologist after many years away from the field of geology. Certified vertebrate paleontology volunteer, Anzu Borrego Desert State Park, Calif. (PhD'54, Univ. of Cincinnati; MS'66 Univ. of Calif.)

**Greene, Samuel, BA'50**

Zoology, MS'52 Education. Member, Rotary International Board of Directors. Recipient, Service Above Self Award, the Rotary's highest recognition and The Rotary Foundation's Citation for Meritorious Service. Spouse, Caki; three children and three grandchildren.

**Hartigan, J. Michael,**

**BA'59** Zoology. Medical volunteer, Bangladesh, Russia, and Siberia. (MD'63 Medicine, SUNY)

**McDowell, Don, BA'53**

Zoology. Rear Admiral, US Navy (Retired). Consultant, Foreign Intelligence. Lives in Chevy Chase, Md.

**Meise, Maxwell, BS'57**

Biological Sciences, BS'57 Education, MS'61 Education, MAT'73 Earth Sciences. Retired after 40 years teaching biology and geology, Indianapolis. Town Council rep, McCordsville, Ind. Active member, U.S. Coast Guard Auxiliary.

**Streets, Bernard, BA'55**

Biology. Host, "The Circle of Friends" TV and radio talk show.

## 1960s

**Delmer, Deborah, BA'63**

Bacteriology. President-elect, American Society of Plant Physiologists. (PhD)

**Hudson, J.R., BS'62**

Dentistry, DDS'65 Dentistry, MS'67 Complete Denture. Practicing in Columbus, Ind.

**Marshall, Edwin, BA'68**

Zoology, BS'70 Optometry, OD'71 Optometry, MS'79 Physiological Optics. Associate Dean for Academic Affairs, IU School of Optometry. Recipient, 2000 Primary Care Policy Fellow, U.S. Public Health Service.

**Norris-Tull, Roger, BSE'69**

Biology. Dean, School of Education, Univ. of Alaska.

**Pasternak, John, PhD'65**

Zoology. Prof. Emeritus, Univ. of Waterloo. Writer, molecular biotechnology and molecular genetics textbooks.

**Sawin, John, BS'62**

Dentistry, DDS'65 Dentistry. Practicing in Columbus, Ind.

**Scott, Darrel, BA'69**

Zoology, MS'71 Health Admin. Joined Brown & Fortunato, Amarillo, Texas. Spouse, Janice, BS'72 Nursing.

**Taylor, Alberto, PhD'67**

Plant Science, MA'60 Plant Science. Faculty researcher, Universidad de Panama, Cycad reproduction and ecology, charophyte ecology, and marsileaceae colonization.

**Vogel, Judy, BA'65** Bacteriology. Retired Manager, Medical pPlans, Eli Lilly & Co.

**Wrenn, Robert, BA'67**

Zoology. President, Aegis Women's Healthcare, Bloomington. Assistant Clinical Professor, IU School of Medicine.

## 1970s

**Alexander, Jay, BA'73**

Biological Sciences. Cardiologist, Lake Forest, Ill. (MD'76, Loyola U.)

**Conlin, Christopher, BS'78**

Microbiology. Associate Prof., Microbiology & Molecular Biology, Minnesota State Univ. Spouse, Patricia.

**Davies, Brian, BA'76**

Biological Sciences, MD'79 Medicine. Cosmetic surgeon, Akron, Ohio.

**DeSantis, Philip, BA'74**

Biological Sciences. Practicing in West Palm Beach, Fla. (MS'80 Physiological Optics; OD'86 New England College of Optometry)

**Dilts, Judith, BA'68**

Biology, MA'75 Zoology, PhD'76 Genetics. Dr. Burnell Landers Chair in Biology, Chair of Biology Dept., William Jewell College.

**Dunaway, Lucinda, BA'77**

Biological Sciences, MD'81 Medicine. Proud new co-owner, with husband, Jeff, Dunaway's Restaurant, Indianapolis.

**Dolph, Gary, MA'73** Plant

Science, PhD'74 Plant Science. Botany professor, IU Kokomo. Virgil Hunt Service Award for campus and community contributions recipient, 2000.

**Farlow Jr., James, BA'72**

Zoology. Prof of Geology, IU Fort Wayne. Discovered only direct evidence to how a dinosaur killed its prey at Paluxy River Trackway. (MPhil'74; PhD'80 Yale Univ.)

**Fischvogt, Kent, BA'72**

Biological Sciences, DDS'76 Dentistry. Oral & Maxillofacial Surgeon, Columbus, Ind.

**Fremd, Mark, M.D., BA'76**

Biology. Opened a fourth medical facility, located in Indiana, Pa. Recently welcomed their sixth child, Rebecca, who joined her siblings, Kiera, Jacob, Joshua, Rachel, and Jonathan.

**Green, Lorrence, MA'74**

Zoology, PhD'78 Biology. President and Founder, Westbury Diagnostics Inc., offering contract R&D microbiology services.

**Gregory, Charles, BA'71**

Zoology, MS'72 Recreation. Volunteer Coordinator, Georgia State Parks, '95-current; Chief Naturalist, Ga. State Parks, '81-'95; Director, Stone Valley Outdoor School, '72-'79. Spouse, Laurie.

**Hillman, David, BA'75**

Biological Sciences, OD'85 Optometry. Grant Program Manager, Nina Mason Pulliam Charitable Trust. Former Executive Director, Ind. Equal Justice Fund. First Executive Director, Alzheimer's Association of Central Indiana.

**Levine, Martin, DDS,**

**BA'72** Biological Sciences. Family Practice Dentistry, Solon, Ohio.

**Marletta, William, BA'77**

Biological Sciences. Fellow, American Society for Testing and Materials. Member, NFPA, American Industrial Hygiene Assoc., N.Y. Academy of Sciences and World Safety Org. National recipient, Safety Professional of the Year, 1996. (MA'85 and PhD'94, Occupational Health & Safety, New York Univ.)

**McCormick, Charles,**

**BA'72** Biological Sciences, MD'75 and Residency'79 Ophthalmology. Physician/Ophthalmologist, Indiana Eye

Clinic, Greenwood. Chair, Vision Council of America advisory panel. Spouse, Jan. Children, Amy and Corky.

**Ortel, Thomas, BS'79** Microbiology, PhD'83 Biochemistry, MD'85. Assoc. Prof. of Medicine, Duke Univ. Medical Ctr., Hematology. Medical Director, Clinical & Platelet Antibody Labs. Director, Anticoagulation Mgmt. Service.

**Palmer, David, BA'76** Biological Sciences. Recently appointed to National Eye Care Project-Eye Care America committee of the American Academy of Ophthalmology. (MD'80 U. of Illinois)

**Schram, Jeffrey, BA'75** Biological Sciences. Commander of more than eight squadrons (aircraft and shore locations), Carrier Air Wing Reserve 20. Spouse, Andrea.

**Sheehan, Kathy, BA'77** Biological Sciences. Research Associate, Dept. of Microbiology & Thermal Biology Institute, Montana State Univ. NSF Microbial Observatory grant to study microbes in Nymph Creek, Yellowstone National Park.

**Sibbitt, J. William, BA'78** Biological Sciences. Vice-President, Hilliard Lyons Inc., Bloomington.

**Sulzbach, Daniel, MA'79** Biological Sciences, PhD'79 Zoology. Vice President, Information Resources at Genentech Inc.

**Ullom, Beth Marie Payne, BA'73** Biological Sciences. Project Manager/Geophysicist, Vadose Research, Inc. Spouse, William, BA'74 Geology.

**Wiegman, William, BA'72** Biological Sciences. Project Mgr., Jack Stilson & Co., Fla.

## 1980s

**Blatt, Lawrence, BS'83** Microbiology. VP, Research, Robozyme Pharmaceuticals Inc., Boulder, Colo. Spouse, Elyse. (PhD'96, Univ. of LaVerne, Calif.; MBA'86 Cal State Univ, Northridge)

**Ebbs, William, BA'83** Biology. Director of Dentistry, Whitman-Walker Clinics, Washington, D.C. (BA'83 Sociology; DDS'87, Howard Univ.)

**Hicks, Jennifer, BS'88** Biology, PhD'95 Physiological Optics. Science teacher, St. Joseph Notre Dame H.S., Alameda, Calif. Spouse, Thomas Huggins. Pets, two dogs and a cat.

**Jones, Mark, BS'88** Biology, MD'93 Medicine. Cardiologist, Indiana Heart Physicians Inc., Beech Grove. Spouse, Kimberly.

**McGoff, John, BA'80** Biology, MD'84 Medicine. Indiana State Medical Association member working to implement an immunization registry in the state to better address future disease outbreaks.

**Osborn, Kathy, BS'87** Biology, BA'87 Religious Studies, JD'99 Law. Practicing, Baker & Daniels, Indianapolis.

**Peterson, Daniel, BS'85** Biological Sciences, MBA'89 Finance. Promoted in '99 to VP, Corporate Administration, Cook Inc., Bloomington, Ind. Spouse, Jennifer.

**Pope, Kirby, BA'80** Biology, MD'84, Psychiatric residency '88. Skillman Clinical Professor of Child Psychiatry at Karl Menninger School of Psychiatry & Mental Health Sciences; Director, Career Training Program in Child & Adolescent Psychiatry.

**Romey, William, BA'83** Biology. Assistant Prof., Southern Utah Univ. Spouse, Judy. (PhD Binghamton Univ.)

**Rumsey, Clifford, BS'85** Biological Sciences. New Product Development Manager, Ferro Corp.'s polymer additives unit, Cleveland.

**Seay, David, BS'83** Biological Sciences, OD'87 Optometry. Practicing in Columbus, Ind.

**Seay, Robert II, BA'81** Biology, OD'85 Optometry. Owner and Director, Zehner Eye Clinic, Evansville, Ind.

Practiced 42 years in Evansville area.

**Wasserman, Michael, BS'87** Biology. Medical practice, Deerfield, Ill. Spouse, Lisa. Children, Allison, 3, and Adam, 1. (MD'91, Medical College of Va.)

**Weinstein, Scott, MS'86** Microbiology and Immunology. Completing research, Adelaide, South Australia.

**Zawistowich, Ludmila, MA'80** Microbiology. Deputy Director, Medicare Payment Advisory Commission. Former director, Medicare Carrier and Intermediary Mgmt. Group, Center for Beneficiary Services at HCEA. (MS, Health Admin and PhD Health Policy and Mgmt, Johns Hopkins Univ.)

## 1990s

**Aklinski, Lauren, BS'99** Biology. Second-year student, Western States Chiropractic College, Portland, Ore.

**Alexander, Lindsey, BA'94** Biology. Pediatric resident, Strong Memorial Hospital, Univ. of Rochester. (MD'00 Ohio State Univ.)

**Allen, Sean, BA'99** Biology. Co-Manager, Kroger, Indianapolis. Spouse, Dewana (Gamble) Allen, BS'99 Applied Health Science, Public Health. Three daughters, Shon, Senayet, and Sinone.

**Bard, Nancy, BS'97** Biology. Medical student, Univ. of Cincinnati.

**Bardonner, Cierra, BS'99** Biology. Second-year student, DVM program, Purdue Univ. Plans a career in companion animal medicine. Fund-raising chair, Student Chapter, American Veterinary Medical Assoc. Pets, Mikey, 8 yr old miniature American Eskimo dog; Vulture, 6 yr old cockatiel.

**Bast, Angela, BS'99** Biology. Scientist, Virology; Alpha Therapeutic Corp, City of Industry, Calif.

**Beckman, Candy, BS'99** Biology. Second-year student, IU School of Medicine. Volunteer, Riley Children's

Hospital, Indianapolis. Member, American Medical Women's Association.

**Belcher, Nicole, BA'99** Biology/Criminal Justice. Crime Scene Technician, Bloomington Police Dept. Pet, miniature schnauzer, Wilsee.

**Bennett, Shannon, BS'99** Biology. Quality Control Analyst, Grain Processing Corp., Washington, Ind. Spouse, Kelly, BS'98 Computer Science. One child born Dec. '99. Pets, two cats and a dog.

**Bentley, Ryan, BS'99** Biology. Student, National College of Chiropractic. Spouse, Terra.

**Bero, Suzanne, BS'99** Biology. Graduate student, physician assistant program, Touro College, Manhattan, N.Y.

**Black, Brian, BS'99** Biology. Third-year medical student, osteopathic medicine, Des Moines Univ. President, Preventative Health Club. AMA stroke prevention lecturer, Community Ambassador, Des Moines Univ. Spouse, Alexandra, married July 2000.

**Bradburn, Kimberly, BS'98** Biology. Medical student, IU School of Medicine. Married to Brent Swigert, October 2000.

**Brantley, Tammy, BA'99** Biology, BS'00 Clinical Lab Science, Allied Health. Medical Technologist, Riverview Hospital, Noblesville, Ind.

**Brokaw, David, BS'99** Biology. Cancer Cytogenetic Technician, IU School of Medicine, Dept. of Medical and Molecular Genetics. Has no pets, but considers himself a "dog" person.

**Brown, Daniel, BS'99** Biology. Second-year student, IU School of Law.

**Buch, Rebecca, BS'99** Biology. Spouse, John R. Buch, O.D., MS'98 Physiological Optics.

**Cain, Stephanie, BA'99** Biology. Branch Office Administrator, Edward Jones Investments, Indianapolis. Spouse, Justin. Pets, two dogs, Bonzo & Ike.

(continued on page 8)

## Alumni notebook

(continued from page 7)

**Clouse, Jolene, BS'99**  
Biology. Third-year student, IU School of Medicine, South Bend Center for Medical Education.

**Clouse, Thomas, BS'96**  
Biology. Student, IU School of Medicine.

**Clune, Patricia, BS'99**  
Biology. Completed two internships at Mote Marine Laboratories, Sarasota, Fla., working first with sea turtles, then with manatees. Now an intern on Hunting Island in South Carolina, again working with sea turtles.

**Collaros, Victoria, MD, BS'93**  
Biology. Physician, Riverside Family Practice, Newport News, Va.

**Cornelius, Jonathan, BS'99**  
Biology. Second-year student, IU School of Medicine. Sponsor, Big Brothers/Big Sisters.

**Craig, Patrick, BS'93**  
Biology. Chiropractor, Fishers, Ind. Spouse, Tricia Craig, BS'95 Nursing.

**Deitchle, Matthew, BS'94**  
Biology, BS'95 Psychology. Grad student, Ball State Univ., MBA, Information Systems.

**Dinn, Robert, BS'99**  
Microbiology. Second-year student, IU School of Medicine.

**Dmitri, Brian, BA'97**  
Biology. Teacher, Edward Little H.S., Lewiston, Me. Spouse, Liza, BS'96 Public Affairs/Environmental Science.

**Dohoney, Sharon, BA'99**  
Biology. Biologist, U.S. Army Corps of Engineers, Louisville. Family, one daughter and two grandchildren, 4 and 3.

**Dowell, Joshua, BS'99**  
Biology. MD/PhD student, Pharmacology, IU School of Medicine. Recipient, Award for Cardiovascular Research at the Western Student Medical Research Forum, Carmel, Calif.

**Ellerman, Tim, BS'99**  
Biology. Second-year student,

Purdue School of Pharmacy.  
**Falcone, Angela, BA'97**  
Biology. Dental student, University of Ill.

**Fenton, Michele, BA'94**  
Biology. Librarian, State of Indiana, Indianapolis.

**Galín, Bradley, BA'95**  
Biology/Environmental Studies. Spouse, Susanne Galín, BS'96 Biology. Child, Jackson Connor born December '99.

**Gleissner, Stephanie, BS'94**  
Biology. Toxicologist, Eli Lilly & Co. MBA candidate, Butler University.

**Goheen, Erin, BS'99**  
Biology. Second-year graduate student, Physician Assistant program, George Washington Univ.

**Gravett, Michael, BS'94**  
Biology. Student, National College of Medicine in Portland, Ore.

**Gray, Jill, BS'99**  
Biology. Third-year medical student, Kansas University.

**Greene, Emily, BA'99**  
Biology. Veterinary technician/assistant, Riveride Veterinary Group; server, Houston's Restaurant; and actress, N.Y.C. Completed a national tour of *Beauty and the Beast* with American Family Theatre. Member, Wildlife Conservation Society, N.Y.C.

**Grunden, Julie, BS'99**  
Biology. Third-year student, Purdue School of Veterinary Medicine. Pets, Kramit (the cat); Arlo (the fish); and Arthur (the rabbit).

**Guruswamy, Tanya, BS'99**  
Biology. Chemistry teacher, Bishop Kelley H.S., Tulsa, Okla.

**Hall, Bradley, BS'99**  
Microbiology. Lab Technician, Andrew Ellington at Univ. of Texas. Research, designing molecular taggant technology for tracing and cataloging certain products. Plans to apply to the FBI after gaining experience and training. Spouse, Alisha. Lives in Austin.

**Hansen II, James, BS'99**  
Biology. Second-year dental student, Univ. of Ill.-Chicago.

**Hart, Andrew, BS'99**  
Biology. Second-year student, IU School of Medicine.

Assistant Scoutmaster, Boy Scout Troop #58, Evansville, Ind. (MS'00 Purdue Univ.)

**Hebert, Matthew, BS'99**  
Biology. Second-year student, IU Dental School.

**Henderson, Theresa, BS'90**  
Biology, MS'92 Physiology, MD'95 Medicine. Pediatrics residency completed in '98. Practicing in Avon, Ind. Married in '99 to Christopher.

**Hendrich, Nicole, BA'98**  
Biology. Veterinary Tech graduate, Purdue University, 2000.

**Hernandez, Paula, BS'94**  
Biology, OD'98 Optometry. Completed Cornea and Contact Lens residency at IU, 1999.

**Hess, Amber, BS'99**  
Biology. Second-year graduate student, physical therapy program, Northwestern Univ., Ill.

**Hilmert, Laura, BS'98**  
Biology. Graduate student, IU School of Law.

**Hornaday, Matthew, BA'99**  
Biology. Second-year student, IU School of Dentistry. Spouse, Tammy. Pet, Casey, black cocker spaniel.

**Hubert, Katherine, BS'99**  
Biology. Second-year student, St. Louis Univ., School of Medicine.

**Jenkins, Antoine, BS'99**  
Biology. Environmental Specialist, Onyx Environmental Services. Son, Bryson, born September '99.

**Johnson, Randie, BS'99**  
Biology. Employed at Andersen Consulting. Will attend graduate school to complete MS in Education and teach secondary-level biology. Spouse, Greg. Proud owners of a yellow lab, Sammy.

**Justice, Benjamin, BS'99**  
Microbiology. Second-year student, IU School of Medicine.

**Kalniz, Julie, BS'95**  
Biology. Practicing, Toledo, Ohio. (DVM'99 Ohio State Univ.)

**Kashanipour, Shiva, BS'99**  
Biology. Graduate student, physician assistant program, in Connecticut.

**Kheyrandish, Anahita, BA'99**  
Biology. Second-year student, Master of Physical

Therapy program, Old Dominican Univ., Va.

**Kidd, Tracy, BA'99**  
Biology/Psychology. Pediatric medical receptionist.

**Kim, Nancy, BA'99**  
Biology, BA'99 Germanic Studies. Second-year student, IU School of Medicine.

**Kronland, William, BS'96**  
Biology. Completed a three-year Peace Corps assignment in Siberia following graduation.

**Krutulis, Jay, BS'94**  
Biology, BA'94 History. Attorney at Law, Washington, D.C.

**Kubek, Michael, BA'99**  
Biology. Medical student, Northwestern Univ. Chicago College of Osteopathic Medicine. Spouse, Dayna.

**Kwasny, Jennifer, BS'99**  
Biology. Graduate student, Environmental Management program, Duke Univ.

**Laird, Sheri, BS'91**  
Biology, BA'91 Psychology, MD'95 Medicine. Internal Medicine & Pediatric physician, Providence Health System, Ore. Spouse, Steve Bodayla. Child, Daniel, born June 1999.

**Lancaster, Shawn, BS'99**  
Biology. Cytogenetic Lab Technician, IU School of Medicine. Spouse, Jill, BS'98 Nursing.

**Lasbury, Nora, BS'99**  
Biology. Third-year student, IU School of Medicine. Volunteer, Riley Children's Hospital and St. Thomas Clinic.

**Lasher, Matthew, BS'00**  
Microbiology. Army Aviation Officer, Platoon Leader. Completing Rotary Wing flight school. Spouse, Christa.

**Lehman, Amber, BA'99**  
Biology. Pharmaceutical rep, Astra Zeneca.

**Levitt, Tracy, BA'99**  
Biology. Second-year medical student, Temple Univ, Pa.

**Ludwig, Susan, BS'99**  
Biology. Second-year MBA candidate, Purdue Univ.

**Lynch, Kristopher, BS'99**  
Biology. Employed as a patent agent and technology specialist.

**Mason, Amanda, BA'99**  
Biology.

**May, Andrea, BS'99**



Biology. Obtaining teacher certification, secondary education biology, IUPUI. Friends, Katy Keller, Laura Albert, Julie Hutchens. Pet kitten, Daisy.

**McMahon, Donald**, BS'90 Biology, MD'95. Physician, St. Francis Medical Group, Mooresville, Ind. Director of Hospice, St. Francis, Indianapolis. Pet dog, Ro.

**McNabb, Jon**, BS'99 Biology. Regional Network Administrator, United Signature Foods. Spouse, Natalie. Pet cat, Pablo.

**Miller, Daniel**, BS'99 Biology. Second-year student, IU School of Medicine. Community group leader, Evangelical Community Church, Bloomington.

**Miller, Erika**, BA'96 Biology. Data Collection Coordinator/Assistant, Kelly Scientific. Assigned to Insulin Products and Oncology teams, Eli Lilly & Co.

**Mohler, Lisa**, BS'99 Microbiology. Microbiologist, Mantek Inc., Manhattan, Kan.. Spouse, Andrew Martin, West Point Alum, 1st Lt. U.S. Army.

**Montag, Jonathan**, DDS, BS'96 Biology. Dental practice, Albany, N.Y.

**Mostak, Richard**, BS'99 Biology. Medical student, Univ. of North Carolina.

**Ortner, Carrie**, BS'99 Biology. Second-year student, IU School of Law, IUPUI.

**Palazzolo, Christopher**, BS'99 Biology. Quality assurance, Hepatitis B business team, Abbott Labs, Ill. Pet kitten, No-mee. Swim instructor, YMCA.

**Paul III, George**, BS'99 Biology. Graduate student, Purdue Univ. School of Pharmacy.

**Paul, Jonathan**, BS'99 Biology. Second-year student, Emory Univ. School of Medicine.

**Penniall, Brian**, BS'99 Biology. Second-year student, University of Ill.-Chicago dental school. Pets, two cats, Bazzle and Cybil.

**Perry, Brea**, BA'99 Biology, BA'99 French, BS'99 Psychology. Research project manager, study of HIV risk among the seriously mentally ill. Graduate student, Medical Sociology & Sexuality, IU Bloomington. Proud owner, two dogs and a gecko.

**Pilling, Aaron**, BS'99 Biology. NIH Fellow, Saxton Lab, IUB. Spouse, Stephanie.

**Piurek, Aimee**, BS'99 Biology. Cytogenetic technologist, Genetics & IVF Institute, Fairfax, Va.

**Pollyea, Daniel**, BS'99 Biology. Second-year medical student, Pritzker School of Medicine, Univ. of Chicago. Volunteer, Free Health Clinic operated by medical school classmates.

**Pope, Brian**, BS'98 Biology. Dental student, Ohio State Univ.

**Pukkila-Worley, Read**, BS'99 Biology. Medical student, University of North Carolina.

**Reddy, Chetana**, BS'99 Biology. Third-year student, IU School of Medicine. Volunteer, Riley Children's Hospital, Indianapolis.

**Reising, Adam**, BS'99 Biology. Graduate student, IU School of Optometry.

**Rentmeesters, Sommer**, BS'99 Biology. Ukraine Peace Corps member, June '99 through Sept. '01.

**Richardson, Charles**, PhD'99 Ecology & Evolutionary Biology. His band, including fellow IU graduates, is in studio recording their first CD.

**Riggs, Jeffrey**, BS'99 Biology. Sales, Pfizer Pharmaceuticals, through March, 2000. Subsequently employed with DynaMed.com, specializing in patient education via video and Internet.

**Robinson, Kristin**, BS'99 Biology. Sales rep, Sunkist, with eventual plans for pharmaceutical sales. Pet, Damon, yellow lab.

**Romas, Christopher**, BS'99 Biology. Second-year student, IU School of Dentistry.

**Rosenblum, Jason**, BS'97

Biology. Graduate student, Dr. William M. Scholl College of Podiatric Medicine to complete program, May 2001.

**Samm, Michelle**, BS'92 Biology. Marine Mammal Trainer, Dolphin Research Center, Florida Keys.

**Schamerloh, Andrew**, BS'99 Biology. Organic chemist, Roche Diagnostics, Indianapolis.

**Schneider, Clay**, BS'97 Biology. Third-year medical student, Winnetka, Ill.

**Sharr, Donna**, BA'99 Biology/Environmental Studies. Environmental Educator, Douglas-Hart Nature Ctr, Ill. Pet, Daisy, her boyfriend's beagle.

**Schultz, Kimberly**, BS'99 Biology. Resident naturalist and Researcher, Ecolodge Sun Luis & Biological Station, Costa Rica.

**Schussler, Thomas**, BS'94 Microbiology, MS'95 Physiology, MD'99. Internal Medicine residency, St. Vincent's Hospital, Indianapolis.

**Scott, Christopher**, BA'99 Biology. 2nd Lt., U.S. Air Force. Student aviator, Vance AFB, Okla.

**Simkins, Beth**, BS'97 Biology. Graduate student, Education, Univ. of Minn. H.S. teacher, biology and physical science; coach, cheerleading, Thomas Jefferson Sr. H.S., Bloomington, Minn.

**Simpson, Halle**, BA'99 Biology. Fleet sales, Airborne Express, Denver, Colo.

**Smith, Jessica**, BS'99 Biology. Medical student, Univ. of Texas, Houston.

**Smith, Ronald**, BA'99 Biology. Employed by Enterprise Rent-A-Car, Plymouth, Ind.

**Sowers, Ginger**, BS'99 Biology. Keeper, Indianapolis Zoological Society, domestic animals. Public educator and trainer in basic husbandry. Spouse, Stephen Vargas. Avid animal lover, spends free time either at the zoo or at home with her dog, Ezekiel.

**Spevacek, Lisa**, BS'94

Biology, OD'98 Optometry. Practicing, Naperville, Ill.

**Stahl, Shelley**, BS'99 Biology. Graduate student, IUPUI. Spouse, Scott. Pets, three Persian cats.

**Stevens, Gwenn**, BA'94 Biology. Regional Site Mgr., Janssen. MBA candidate, Xavier Univ. Married, May 2001.

**Stone, Jana**, BS'99 Microbiology. PhD genetics student, Univ. of North Carolina.

**Tushan, Mark**, BA'99 Microbiology. (MS'00 Biotechnology, Northwestern Univ.)

**Walker, Angel**, BS'99 Biology. Student, Southern Ill. Univ. MEDPREP program; then on to medical school. MEDPREP Club President.

**Walsh, Christina**, BA'99 Biology. Contract scientist, Dow AgroSciences, Indianapolis. Child, Zachary, age 5.

**Wang, Andrew**, BS'99 Biology. Medical student, Harvard University, HST program.

**Webster, Thomas**, BS'99 Biology.

**Wickness, David**, BA'99 Biology. Fourth-year dental student, Southern Illinois Univ. Spouse, Rachel A. Davis.

**Williams, Charles**, BS'99 Biology. Medical student, American Univ. of the Caribbean, St. Maarten, Netherlands Antilles. Board member, St. Maarten Roadrunners Club.

**Wolff, Brian**, BS'99 Biology. Contracts manager, Ind. Dept. of Environmental Mgmt., Indianapolis.

**Wright, Tara**, BS'97 Biology. Quality Assurance Director, Interstate Blood Bank Inc.

## 2000s

**Baker, Jason**, BS'00 Biology. Second-year student, IU School of Dentistry.

**Bauer, Sarah**, BS'00 Biology. First-year medical student, Pritzker School of Medicine, Univ. of Chicago. Member, American Medical Women's Association. Volun-

(continued on page 10)

Join the Alumni Association  
or renew your membership online!  
Visit [www.alumni.indiana.edu](http://www.alumni.indiana.edu)  
and click on "Membership."



Stay connected to IU  
with membership\*  
in the Alumni Association.  
We're just a click away.

**Enjoy valuable member benefits:**

- Subscription to INDIANA ALUMNI MAGAZINE
- Free lifetime IU alumni e-mail forwarding address
  - Online alumni directory
  - Alumni club network
- Member discounts on hotels, rental cars, and IU merchandise
- IU scholarships for children of members
  - Insurance, family camp, travel, and continuing education programs



INDIANA UNIVERSITY ALUMNI ASSOCIATION

Phone: (800) 824-3044

E-mail: [ialumni@indiana.edu](mailto:ialumni@indiana.edu)

Home page: [www.alumni.indiana.edu](http://www.alumni.indiana.edu)

\* Also includes membership in the IU College of Arts  
& Sciences Alumni Association

## Alumni notebook

(continued from page 9)

teer, Neonatal Intensive Care Unit, Cuddlers Program.

**Belagaje, Samir**, BS'00 Microbiology, BS'00 Public Affairs/Public Policy. Second-year student, IU School of Medicine.

**Christie, Elizabeth**, BA'00 Biology. RN, Cardiac Medical, St. Vincent Hospital, Indianapolis. Student, BS Nursing, Bellarmine Univ., Ky.

**Chui, Emily**, BS'00 Biology. Second-year student, IU School of Medicine. Summer appointment, Indiana Dept. of Health. Summer volunteer at camp for chronically ill children in Florida.

**Corcoran, Daniel**, BS'00 Biology. Lab Technician, Frontier Geosciences, Seattle.

**Eads, Todd**, BS'00 Biology. First-year medical student, IU School of Medicine. Air Force Lt., Medical Air Force Program.

**Evans, Leslie**, BA'00 Biology. First-year student, Dental Hygiene, IU Northwest.

**Dhahir, Adnan**, BS'00 Microbiology. Quality Control Microbiologist, Pfizer.

**Green, Gretchen**, BS'00 Biology. First-year DVM student, Univ. of Tenn. Fiddler in a Knoxville bluegrass band.

**Gripe, Amanda**, BS'00 Biology. Graduate student, Biology at IUPUI, Purdue School of Science. Starts medical school, August 2001, IU School of Medicine.

**Hamilton, Amy**, BS'00 Biology. Microbiologist, Laboratory Corp. of America, Louisville, Ky.

**Horton, Samuel**, BA'00 Biology. Second-year student, IU School of Medicine. Volunteer, Spanish-English translator, Clarian Health, Indianapolis.

**Keeton, Jeremy**, BA'00 Biology, BA'00 Chemistry. Organic chemist and intern, Eli Lilly & Co., Indianapolis. graduate student, Chemistry, IUPUI. Spouse, Jessica Keeton,

BS'00 Education.

**Keith, Joshua**, BA'00 Biology, BA'00 Spanish. First-year medical student, Midwestern University, Ill.

**Kroczek, Catherine**, BS'00 Biology. First-year student, IU School of Dentistry, July 2001. Volunteer, Outreach Kenya Development following graduation.

**Lee, Joshua**, BA'00 Biology. Research Assistant, Methodist Research Institute, Indianapolis. Spouse, Angela.

**Le Master, Rhea**, BS'00 Biology. Research Scientist, Nature's Sunshine Products, Spanish Fork, Utah.

**May, Wendi** BS'00 Biology. Senior Lab Technician-Mont., Richmond Family Care Center, Ind. Spouse, Andrew. Children, two boys, 14 years and 8 months. Facilitator for Mending Hearts.

**Menzie, Anna**, BS'00 Microbiology. PhD genetics student, Univ. of Wisconsin, studying cellularization and germ plasm determination in the zebrafish.

**Meyer, Erin**, BS'00 Biology. Senior Associate, Operational Support, Meridian Biosciences, Cincinnati.

**Moore, Bradley**, BS'00 Biology. First-year student, IU School of Dentistry beginning July 2001.

**Moses, Kristie**, BS'00 Biology. Aquatic Safety Consultant, Jeff Ellis & Associates Inc., Kingwood, Texas. Graduate student, Parks & Recreation Admin., IU Bloomington. Volunteer, American Red Cross. Coach, IU Gymnastics Club.

**Nixon, Keri** BA'00 Biology, BA'00 Anthropology. Microbiologist, Hoosier Microbiological Laboratory Inc. Spouse, Brian Nixon, BS'98 Kinesiology/Exercise Science. Pet, Zeta, Yorkshire Terrier.

**Park, Suzannah**, BS'00 Biology. Second-year student, IU School of Medicine.

**Patel, Neha**, BS'00 Biology. Second-year student, IU School of Optometry. Member, Fellow

(continued on page 11)

## What's news with you?

Please print in as much of the following information as you wish. Its purpose, in addition to providing us with your class note, is to keep IU's alumni records accurate and up to date.

Publication carrying this form: Biology Alumni Newsletter Date \_\_\_\_\_

Name \_\_\_\_\_

Preferred name \_\_\_\_\_

Last name while at IU \_\_\_\_\_ IU Degree(s)/Yr(s) \_\_\_\_\_

Soc. Sec. # or Student ID # \_\_\_\_\_

Home address \_\_\_\_\_ Phone \_\_\_\_\_

City \_\_\_\_\_ State \_\_\_\_\_ Zip \_\_\_\_\_

Business title \_\_\_\_\_ Company/Institution \_\_\_\_\_

Company address \_\_\_\_\_ Phone \_\_\_\_\_

City \_\_\_\_\_ State \_\_\_\_\_ Zip \_\_\_\_\_

\* E-mail \_\_\_\_\_ \* Home page URL \_\_\_\_\_

*\* Please indicate clearly upper and lower case.*

Mailing address preference:  Home  Business

Spouse name \_\_\_\_\_ Last name while at IU \_\_\_\_\_

IU Degree(s)/Yr(s) \_\_\_\_\_

Your news: \_\_\_\_\_

---

---

---

---

---

---

---

---

---

---

Please mail to the return address on back page, or fax to (812) 855-8266.



## Alumni notebook

*(continued from page 10)*

Christian Optometrists. Mission participant to Honduras during first-year of OD program providing eye care to 400 patients.

**Patel, Nikil**, BS'00 Biology. First-year student, IU School of Optometry.

**Patel, Vinit**, BS'00 Biology. First-year medical student, St. George University, N.Y.

**Riggs, Leah**, BA'00

Biology, BA'00 Psychology. Adoption counselor, Cascades Humane Society, Michigan. Spouse, Nicholas Riggs, BA'98 Biology. Proud owners, six very spoiled cats. Loves gardening, boating, and bird-watching.

**Roth, Daniel**, BS'00 Biology. Graduate student, Masters of Science program, IUPUI. Begins medical school, fall 2001, IUPUI. Active in Big Brothers of Greater Indianapolis.

**Ryan, Stephanie**, BA'00 Biology, BA'00 Spanish. First-

year student, IU School of Medicine. Pet, Max, a Scottish Terrier.

**Sadowski, Lynn**, BS'00 Biology. Lead Clinical Research Associate, Boston Biostatistics Inc., Framingham, Mass.

**Seib, Kelly**, BS'00 Biology. First-year student, Stritch School of Medicine, Loyola Univ., Chicago. Member, American Medical Women's Association. Visits elementary school children with "What's in a Doctor's Bag" program.

**Skratsky, Melissa**, BS'00

Biology. First-year student, Scholl College of Podiatric Medicine, Chicago.

**Trumbaugh, Chad**, BS'00 Biology. Second-year graduate student, Biology, IUPUI.

**Walker III, Joseph**, BS'00 Biology. First-year student, IU School of Medicine. Will travel Europe for two months, summer 2001.

**White, Craig**, BS'00 Biology. Research chemist, Bath & Body Works, Ohio.

— Notes compiled by  
Sandy Reynolds

## Have tag, will travel



Send us your business card — or just your business information — and we'll send it back to you laminated and attached to a strap, perfect for your traveling pleasure. (One tag per graduate, please.)

Your luggage tag will show that you are proud of your connection to the College of Arts & Sciences at IU and will improve our alumni database.

Mail your card or information to Luggage Tags, College of Arts & Sciences, Kirkwood Hall 208, 130 S. Woodlawn, Bloomington, IN 47405.

INDIANA UNIVERSITY  
ALUMNI ASSOCIATION



Virgil T. DeVault Alumni Center  
1000 East 17th Street  
Bloomington, Indiana 47408-1521

Nonprofit Organization  
Postage  
PAID  
Indiana University  
Alumni Association

 Printed on recycled paper in U.S.A.

## Top honors

*(continued from page 1)*

members of our faculty also belonged to the National Academy, including Muller, Briggs, Cleland, Sonneborn, Carl H. Eigenmann, and Marcus Rhoades. Three former faculty members were elected to

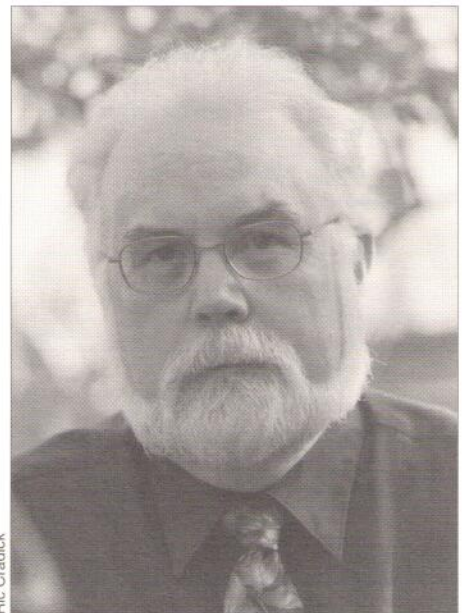
membership in the academy while here at IU, including David L. Dilcher, Norman R. Pace Jr., and the late Richard C. Starr.

Last year, Raff was also named the Rudy Professor of Biology in recognition of his research, teaching, and service to the university. The professorship is named after James H. Rudy, who left the bulk of his

estate to Indiana University. Originally this award was reserved for English professors, but was later expanded to attract and retain outstanding faculty from all disciplines.

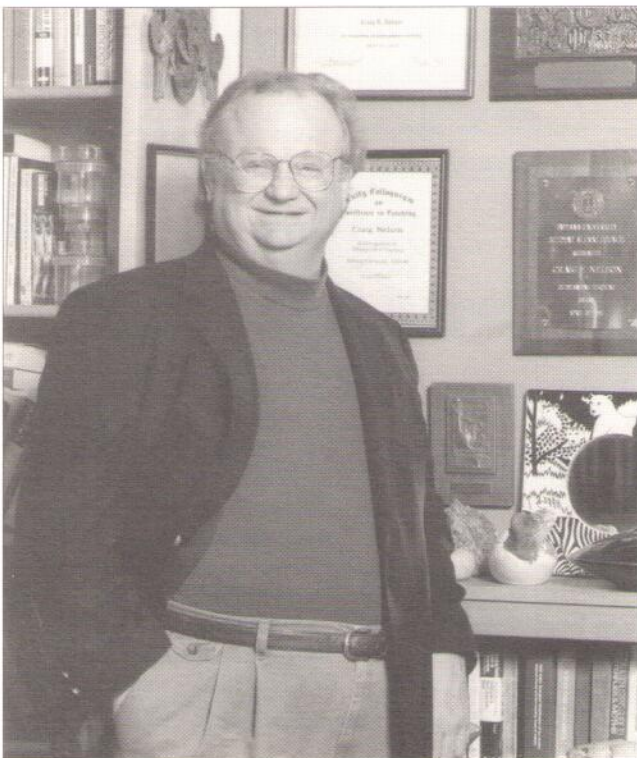
The Council for the Advancement and Support of Education and the Carnegie Foundation for the Advancement of Teaching honored Craig Nelson for his improvement of undergraduate teaching. He was named U.S. Professor of the Year last November.

**Professor Craig Nelson was named U.S. Professor of the Year in November 2000.**



**Distinguished Professor Thomas Kaufman was elected to the American Academy of Arts and Sciences in 1999.**

Nelson earned this award in the research and doctoral universities division. He was also honored at IU's annual Founder's Day ceremony, where he received the rarely bestowed President's Medal for Excellence. Past recipients have included the School of Music's Beau Arts Trio, the Dalai Lama, and former U.S. Congressman Lee Hamilton.



Mick Judy

Ric Cradick