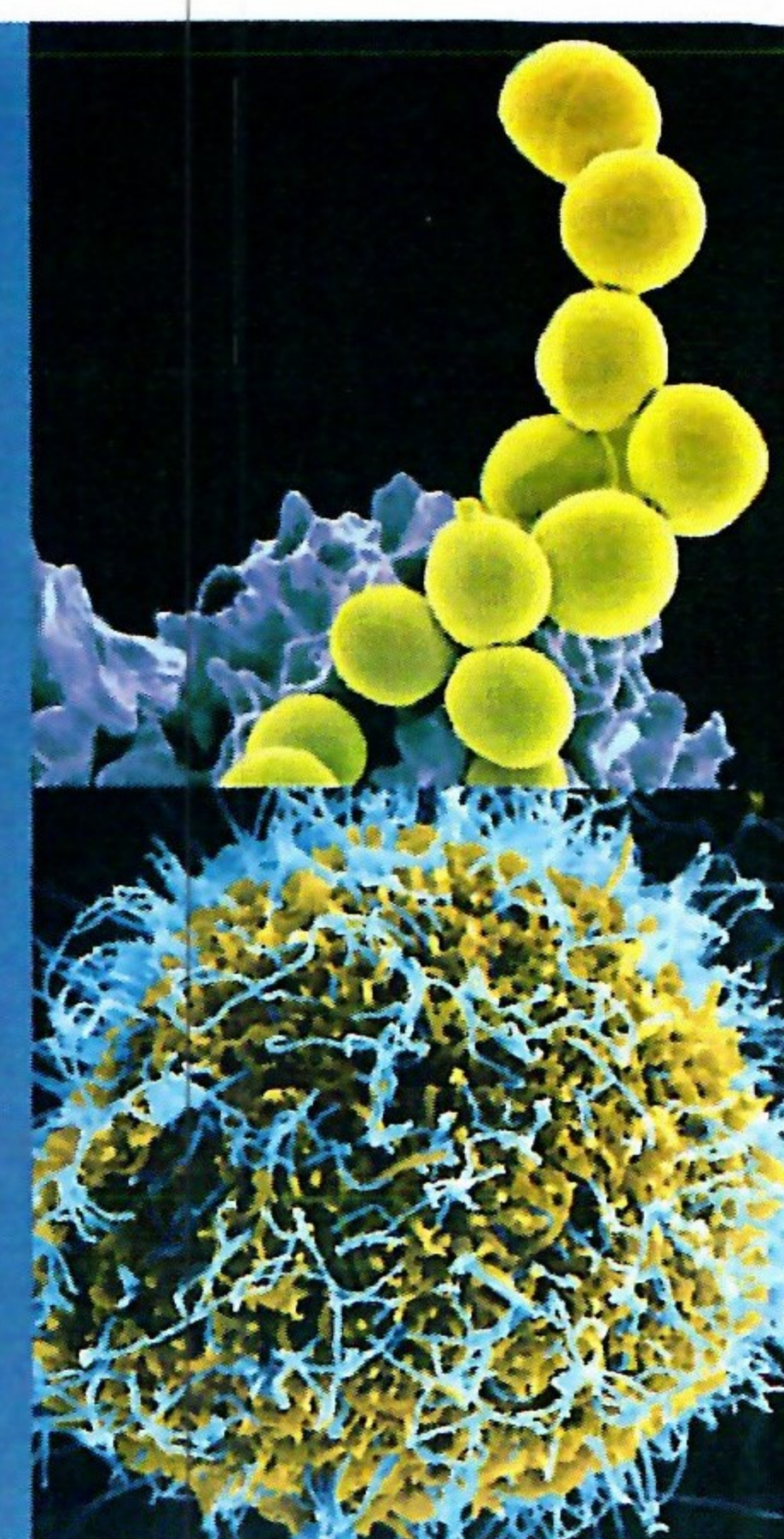
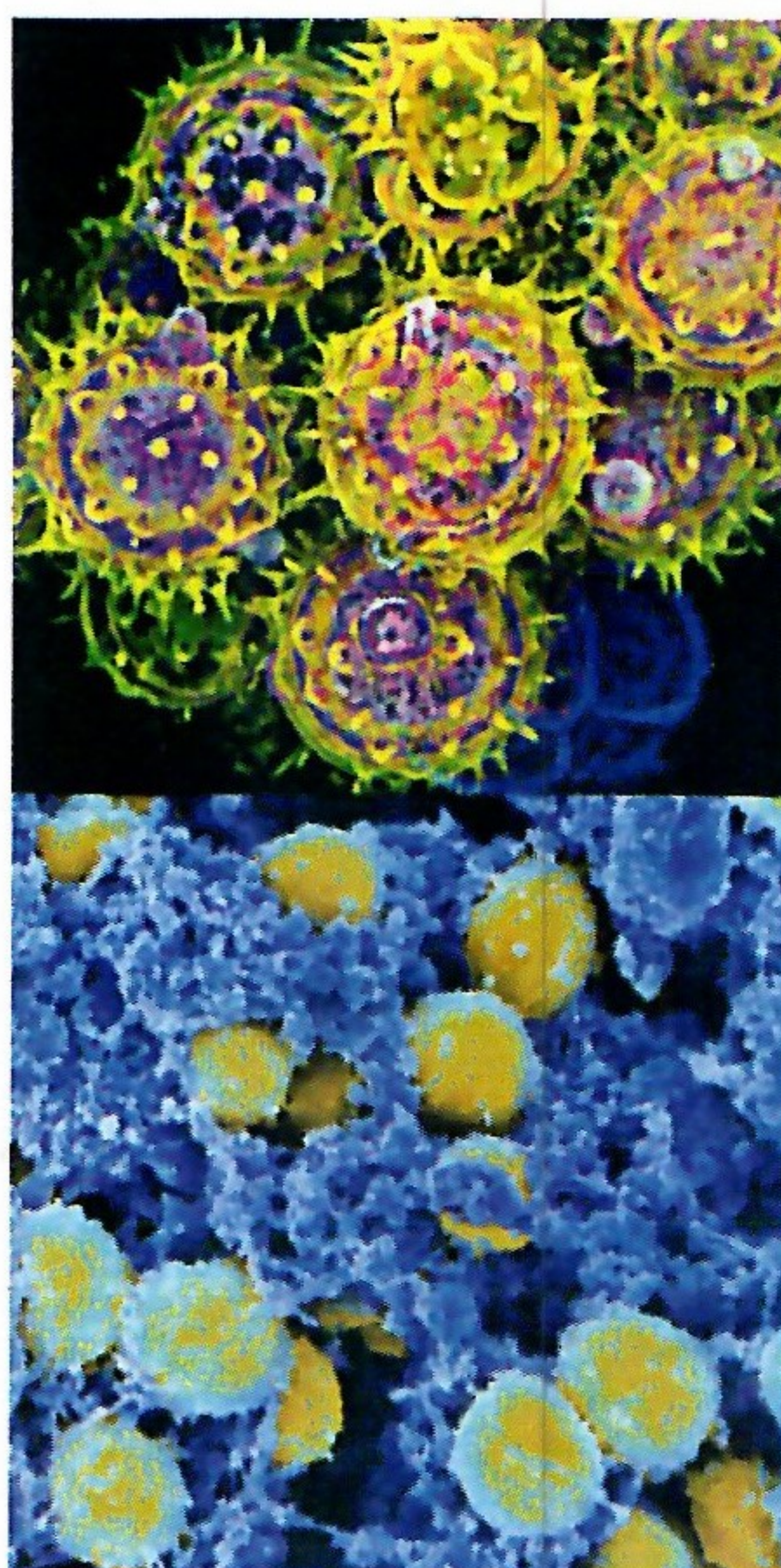




National Institute of
Allergy and
Infectious Diseases

Postdoctoral Research



Postdoctoral fellows at NIAID engage in advanced basic, translational, and clinical research at the forefront of immunologic, allergic, and infectious diseases while gaining access to outstanding career and professional support.

Why Train at NIAID

- A world-renowned biomedical research community with access to outstanding research facilities and resources – including research seminars, meetings, and scientific events
- Training in grant writing, science communication, teaching, and other key skills
- A wealth of support for career exploration, including preparation for independent positions, and job applications

Eligibility

- U.S. citizen/foreign national
- Completed most recent doctoral degree within the past five years (Ph.D., M.D., D.D.S., or equivalent graduate degree)
- Less than five years of relevant research experience since award of most recent doctoral degree

How to Apply

Explore NIAID research:

www.niaid.nih.gov/research/research-conducted-niaid

Find a Postdoc Position:

- Contact an NIH principal investigator directly; not all positions are formally listed
- View currently listed open positions
- Apply to special postdoctoral training fellowships

Contact: Sydella Blatch, Ph.D.,
Postdoc Program Manager
sydella.blatch@nih.gov

Visit our website:



www.niaid.nih.gov/about/postdoctoral-research-training

NIAID Laboratory Locations

NIH Main Campus,
Bethesda, Maryland
(other locations: Rockville,
Frederick, Baltimore)



Rocky Mountain
Laboratories
Hamilton, Montana

