



AND
ANA

UNIVERSITY

Become your best

You have big plans and bigger dreams. To achieve them, you need to tap into your potential and become your best.

At Indiana University Bloomington, you'll have abundant opportunities to learn, get experience, and grow—so you're ready for your career and your life.

Your future is bright. We want to help you shine.

**You are IU's third century.
Let's forge the future together.**

Inside ✨

Academics / 2

Majors / 4

Experiences / 6

Campus / 12

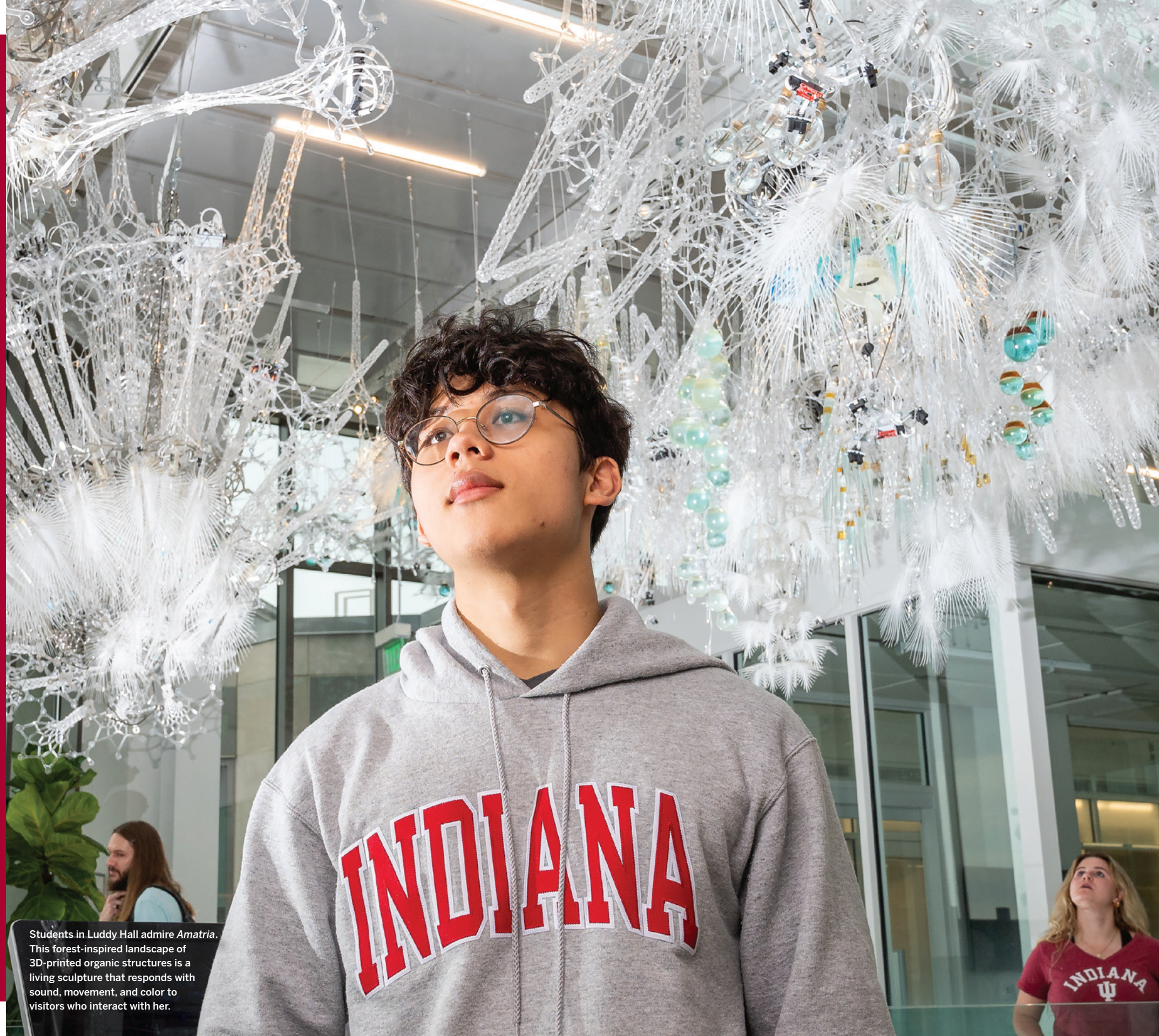
Traditions and spirit / 14

Community / 16

Careers / 18

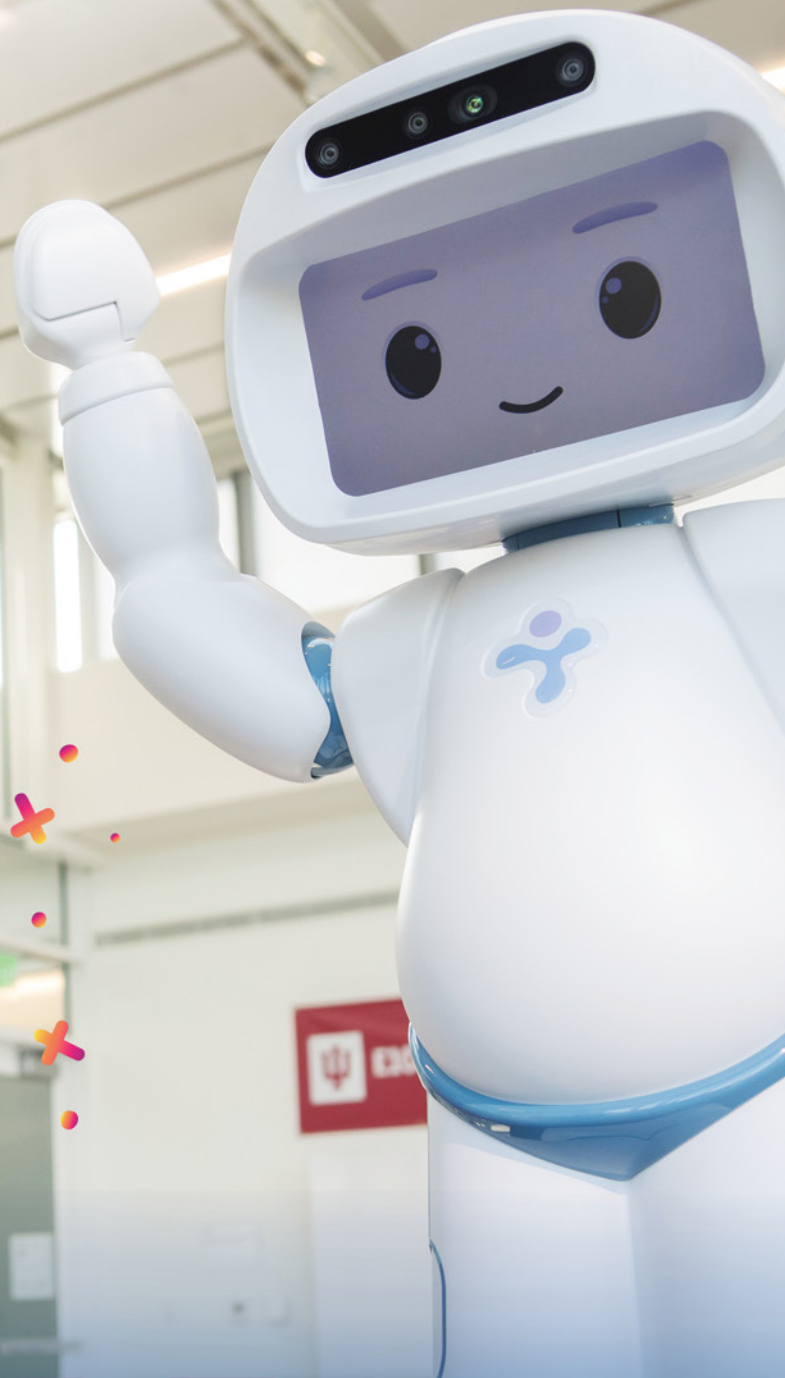
How to apply / 22

Cost and scholarships / 23



Students in Luddy Hall admire *Amatria*. This forest-inspired landscape of 3D-printed organic structures is a living sculpture that responds with sound, movement, and color to visitors who interact with her.

IU's globally-recognized Luddy School of Informatics, Computing, and Engineering inspired international student and Wells Scholar **Agness Lungu** to leave her home in Lusaka, Zambia, to study engineering, mathematics, and journalism. Passionate about artificial intelligence and robotics, Agness was drawn to Luddy for its highly specialized intelligent systems engineering program, which encompasses each of her interests.



SPARK

YOUR
CURIOSITY
AND
CAREER

An IU education is one of the world's best.

There's no single path to becoming your best. So we empower you to make your own.

- Personalize your education by combining programs, specializing, or creating your own major or minor.
- Prepare for the careers of tomorrow.
- Hone the essential and timeless career skills employers want.
- Create or discover something new.
- Be taught, inspired, and mentored by our faculty.

1:3

graduating seniors have studied abroad

2021 Open Doors Report
International Education Exchange

80+

languages taught, the most in the country

17:1

student-faculty ratio

66%

of undergrad classes have fewer than 30 students



200+ majors. Choose one or more.

Explore. Mix and match programs to create an education that matches your ambitions. IU Bloomington's unique entry point for undergrads—University Division—gives you the freedom to decide which interests you want to pursue.

IU also has hundreds of graduate and professional programs. See all of IU's programs: go.iu.edu/majors

Exploratory

This is our most popular freshman option, enabling you to explore before declaring a major—ideally at the end of your first year. During this time, you'll be a student in University Division, the academic and advising home for most new undergrads. You can also start your career exploration at the Career Development Center.

College of Arts + Sciences college.indiana.edu

Advanced Chinese Language and Culture*
 African American and African Diaspora Studies
 African American and African Diaspora Studies/English
 African American and African Diaspora Studies/History
 African American and African Diaspora Studies/Religious Studies
 African American and African Diaspora Studies/Sociology
 American Studies
 Animal Behavior
 Anthropology
 Anthropology/Linguistics
 Art History
 Astronomy and Astrophysics
 Atmospheric Science
 Biochemistry
 Biology

Biotechnology
 Business German*
 Chemistry
 Classical Civilization
 Classical Studies (Greek, Latin)
 Clinical Psychological Science
 Cognitive Science
 Comparative Literature
 Computational Linguistics
 Computer Science
 Criminal Justice
 Dance
 Dutch Studies*
 Earth and Atmospheric Sciences
 Earth Science
 Economics
 Economics/Mathematics
 Economics/Political Science
 English
 Environmental Geoscience
 Environmental and Sustainability Studies**
 Environmental Science**
 Folklore and Ethnomusicology
 Food Studies*
 French
 French and Francophone Global Studies*
 Gender Studies
 Geographic Information Systems and Remote Sensing*
 Geography
 Germanic Studies
 Global Human Diversity*
 History
 Human Biology
 Individualized Major Program
 Italian
 Jewish Studies
 Liberal Arts and Management*
 Liberal Studies

Linguistics
 Management and Human Organization
 Mathematics
 Medieval Studies*
 Microbiology
 Molecular Life Sciences
 Musical Theatre
 Neuroscience
 Organizational and Business Psychology
 Philosophy
 Philosophy/Political Science
 Philosophy/Religious Studies
 Physics
 Political and Civic Engagement*
 Political Science
 Portuguese
 Psychology
 Psychology of Business*
 Religious Studies
 Slavic and East European Languages and Cultures
 Spanish and Hispanic Culture for Global Business*
 Social Research in Health and Medicine*
 Sociology
 Spanish
 Speech, Language, and Hearing Sciences
 Statistics
 TESOL and Second Language Acquisition*
 Theatre and Drama

The Media School; the Eskenazi School of Art, Architecture and Design; and the Hamilton Lugar School of Global and International Studies are part of the College of Arts and Sciences.

Eskenazi School of Art, Architecture + Design eskenazi.indiana.edu

Comprehensive Design
 Fashion Design
 Interior Design
 Merchandising
 Studio Art

Hamilton Lugar School of Global and International Studies hls.indiana.edu

African Studies*
 Cybersecurity and Global Policy***
 Central Eurasian Studies
 East Asian Languages and Cultures
 East Asian Studies
 European Studies*

Global Service and Peace Corps Preparation*
 India Studies
 Indic Languages and Cultures*
 International Law and Institutions
 International Studies
 Islamic Studies*
 Latin American and Caribbean Studies*
 Middle Eastern Languages and Cultures

Jacobs School of Music music.indiana.edu

Analog Audio Electronics*
 Audio Engineering and Sound Production
 Ballet
 Composition
 Historical Performance
 Jazz Studies
 Music Education
 Performance
 Rock History*

Students majoring in ballet, composition, historical performance, jazz studies, or performance have the additional option of pursuing an outside field offered by another school or college at IU Bloomington.

Kelley School of Business kelley.iu.edu

Accounting
 Business Analytics (co-major only)
 Digital and Social Media Business Applications (co-major only)
 Digital Technology Management (co-major only)
 Economic Consulting
 Entrepreneurship and Corporate Innovation
 Finance
 Information Systems
 International Business (co-major only)
 Law, Ethics, and Decision Making (co-major only)
 Leading Diverse, Equitable, and Inclusive Organizations (co-major only)
 Management
 Marketing
 Operations Management
 Professional Sales
 Public Policy Analysis
 Real Estate
 Supply Chain Management
 Sustainable Business (co-major only)

Luddy School of Informatics, Computing, and Engineering luddy.indiana.edu

Computer Science
 Cybersecurity and Global Policy***
 Data Science
 Informatics
 Intelligent Systems Engineering

O'Neill School of Public and Environmental Affairs oneill.indiana.edu

Applied Research and Inquiry*
 Arts Administration*
 Arts Management
 Environmental and Sustainability Studies**
 Environmental Management
 Environmental Science**
 Healthcare Management and Policy
 Human Resource Management
 Law and Public Policy
 Management
 Nonprofit Leadership Alliance* (externally awarded)
 Nonprofit Management*
 Nonprofit Management and Leadership
 Policy Analysis
 Public Affairs*
 Public Financial Management
 Public Health*
 Public Management*
 Public Management and Leadership
 Urban Studies*

School of Education education.indiana.edu

Counseling and Student Services
 Early Childhood Education (P–3)
 Elementary Education (K–6)
 Higher Education and Student Affairs*
 Music Education (P–12)
 Secondary Education (5–12), with content fields in:
 Chemistry
 Earth/Space Science
 Health
 Journalism
 Language Arts/English
 Life Science/Biology
 Mathematics
 Physics
 Social Studies
 Special Education—Elementary (K–6)

Special Education—Secondary (5–12), with content fields in:
 Language Arts/English
 Mathematics
 Science
 Visual Arts Education (P–12)
 World Language Education (P–12), with content fields in:
 French
 German
 Latin
 Russian
 Spanish

School of Nursing nursing.indiana.edu

Nursing

School of Public Health-Bloomington publichealth.indiana.edu

Community Health
 Dietetics
 Environmental Health
 Epidemiology
 Exercise Science
 Fitness and Wellness
 Human Development and Family Studies
 Martial Arts*
 Nutrition Science
 Parks, Recreation, and the Outdoors
 Recreational Therapy
 Safety
 Safety Management*
 Sport Marketing and Management
 Tourism, Hospitality, and Event Management
 Underwater Resource Management*
 Youth Development

School of Social Work socialwork.indiana.edu

Labor Studies
 Social Work

The Media School mediaschool.indiana.edu

Cinematic Arts
 Game Design
 Journalism
 Media
 New Media and Interactive Storytelling*

Design your own major:
go.iu.edu/imp

*Certificate only **Jointly administered by the College of Arts and Sciences and the O'Neill School of Public and Environmental Affairs ***Jointly offered by the Hamilton Lugar School of Global and International Studies and the Luddy School of Informatics, Computing, and Engineering

Keaton Weber decided to attend IU so he could pursue a major in music education and a minor in conducting at the highly-regarded Jacobs School of Music. Passionate about percussion, Keaton appreciated the opportunity to enjoy a large campus experience while still receiving a world-class music degree.

DEFINE YOUR PASSIONS

A native of Greencastle, Indiana, **Abby Teipen** fell in love with biology long before college. Upon visiting, Abby recognized the university for what it is: "I saw how many opportunities IU promised, so I took a chance and applied. I haven't looked back since!" Abby's enthusiasm and dedication earned her a place working alongside a professor in a research lab, where she gets real-world, hands-on experience.

ADVENTURE OF A LIFETIME

380+ overseas study programs give you the world.

They span 70+ countries and 20 languages, including English. Stays range from a few days to a full year.

IU students have interned for European fashion houses. Analyzed IT development in India. Taught reading and writing to children in Rwanda. Created documentaries in Ecuador. So where will you go, and what will you do?

Morgan McKown took this photo on a trip to Morocco during her semester in London. While abroad, she worked toward her degree in healthcare management and policy by studying politics and global development, which informed her understanding of health policies in the United States and other countries.

Get noticed by employers, and get ready to excel after they hire you.

Internships

Get work experience in your future career, build your network of contacts, and see what kind of workplace suits you.

Leadership opportunities

Complete the Hoosier Leadership Program, serve in IU Student Government, direct a student organization, and more.

Service

Enrich your life and help others through service-learning courses, IU Corps, alternative breaks, and student organizations.

Hutton Honors College

Join a community of talented and highly motivated students with plenty of unique programming and opportunities.

More ways to get experience and prepare for what's next:

- Train for a financial services career in the Investment Banking Workshop.
- Devise solutions to global policy challenges in the IU Diplomacy Lab.
- Launch your research career in the Science, Technology, and Research Scholars (STARS) program.
- Tell stories through the *Indiana Daily Student*, IU Student Television, and WIUX radio.
- Help nonprofits with technology in the Serve IT clinic.
- Teach students in different cultures through the Global Gateway for Teachers program.
- Debut your mini-collection in the IU Fashion Show.
- Prepare for advanced study and a career in law, medicine, or health through the Health Professions and Prelaw Center.



Spencer Biery started in IU's University Division (UD) before entering a degree-granting IU school. His UD advisor, Alice Dobie, was a key source of ideas, feedback, and support as he tried out majors and found his best fit: international studies. Last summer he studied in the Dominican Republic.

EXPERIENCE THAT MAKES YOU

STAND OUT

3,000+

for-credit internships completed by IU undergrads in 2020–2021, plus thousands more noncredit internships

Sade Roberson interned at nearby French Lick Resort, in the magnificent, historic West Baden Springs Hotel. She learned all about operating a hotel, confirmed that she wants to work in hospitality, and spent a summer doing what she loves: making guests happy.





STUNNING

WE'RE ONE OF
THE MOST
INSTAGRAMMED
PLACES IN
INDIANA.

HERE'S WHY.

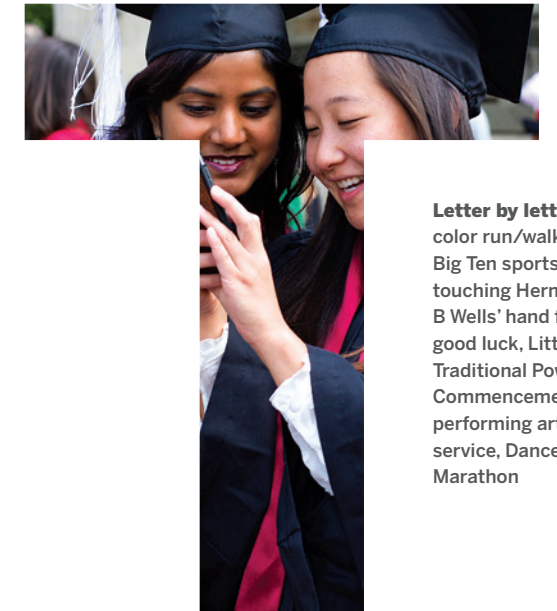
Plan your visit:
go.iu.edu/visit





You can feel the Hoosier spirit in every IU tradition.

You'll treasure our 200+ years of traditions. And they'll give you and your friends reasons to return as alumni.



Letter by letter:
color run/walk,
Big Ten sports,
touching Herman
B Wells' hand for
good luck, Little 500,
Traditional Powwow,
Commencement,
performing arts,
service, Dance
Marathon



WELCOME TO YOUR HOME

away from home



You'll find your place in the IU family.

IU is full of ways to form deep bonds, explore what matters to you, and feel at home. It all starts in your residence hall.



14 residence halls and 9 apartment complexes

New students are required to live on campus, and you'll be glad you did. You'll make your first IU friends here and you'll have easy access to tutoring and advising.



7 cultural centers and institutes

Celebrate cultures you love, and find others you want to learn more about.



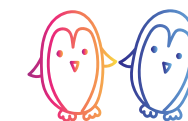
Bloomington, the perfect college town

IU is located in the heart of this 80,000-person small city. Shop on Kirkwood Avenue. Enjoy international cuisine. See great shows. Explore miles of trails. And find even more people and activities you like.



20+ learning communities

Live with students who share one of your interests, like business, health careers, or media. You'll explore that interest together.



750+ student organizations

Have fun, build your network of connections, and get leadership experience.



A space for everyone

From the LGBTQ+ Culture Center to the Neurodiversity Coalition, you'll find a place to connect with others who understand.



Welcome Week and Hoosier Experience events

Exciting activities. Time-honored traditions. Start your first year strong and build a foundation for your entire IU experience.



Students from 50 states and 140+ countries

Our 32,000 undergraduates and 10,000 graduate students include people of all kinds, expanding your worldview.

Class of 2021 outcomes

Bachelor's degree graduates

Full-time jobs in
44 **26**
states countries

Top states for
full-time employment:

Indiana, Illinois, New York,
California, Texas

93%

of graduates were employed
full time or part time, entered
volunteer service or the military,
or continued their education
within six months of graduation

This figure uses information on 79%
of bachelor's degree graduates in our
undergraduate schools, not including
the School of Nursing.

47%

of IU seniors and alumni who
applied to medical school
were admitted to at least one
(national average: 38%)

81%

of IU seniors and alumni
who applied to law school
were admitted to at least one
(national average: 68%)

Recruiting at IU in 2020–21

1,700+

employers actively
recruited IU students

25

career fairs attended
by 8,000+ students

2,000+

undergraduate students
participated in on-campus
interviews

325+

career workshops helped
students explore options
and build skills

Hiring employers
in 2020–21 included:

Catalent Pharma Solutions
Eli Lilly and Company
Amazon.com, Inc.
Salesforce, Inc.
Anthem, Inc.
IU Health
Epic Systems Corporation
JPMorgan Chase & Co.
Bank of America
Corporation
AT&T, Inc.
Target Corporation
Goldman Sachs
Crowe LLP
Deloitte
EY
Grant Thornton LLP
Oracle Corporation
KPMG LLP
PwC
Epic Systems
RSM
Kohl's
Charles Schwab
Accenture
Huron Consulting Group
Grainger, Inc.

The information on this page is from the
Career Services Metrics Committee and
the Health Professions and Prelaw Center
at IU Bloomington.

INSPIRED



Morgan Sanders discovered his entrepreneurial side at age 16, when he started a sneaker resale business, Morgan's Kickz. Now a management major at the Kelley School of Business, Morgan is learning more about himself and business. "No one has ever traveled this post-Covid world before, and we can go down a new road with tons of opportunities for innovation and change."

TURN YOUR AMBITIONS INTO OPTIONS

For his individualized major in marine biology, **Joshua Stewart** dove into underwater research projects such as studying coral growth on shipwrecks. He received a Ph.D. at Scripps Institution of Oceanography, where he studied manta rays. Now he researches whales at the National Oceanic and Atmospheric Administration and is an associate director of The Manta Trust.

XANDRIA McDOWELL, B.S., M.S. 2022

At IU: A Groups Scholar who received her B.S. and M.S. in intelligent systems engineering at the Luddy School of Informatics, Computing, and Engineering.

After IU: Working for a leading aerospace company and serving as a graduate advisor for the National Society of Black Engineers.



Ashley Toruno

At IU: Studied public management, learning how to improve communities. Practiced her skills as a summer associate for AmeriCorps VISTA and an intern for USAID in Washington, D.C.

After IU: Is a community engagement and policy advocate at ACLU of Indiana.



Michael Koryta

At IU: Studied criminal justice. Wrote his first two published novels.

After IU: Worked as a private investigator and newspaper reporter before writing full time. Is a best-selling author of 15 suspense novels.



Sage Steele

At IU: Studied sports communication. Interned for a radio station and IU Athletics.

After IU: Worked her way up through local TV stations and regional networks. Joined ESPN in 2007 and anchors *SportsCenter*.



LIKE THESE IU GRADS

740,000+ IU graduates who will support you

IU alumni are everywhere, and they're eager to help another Hoosier. One of the world's largest alumni networks, they'll mentor you and connect you with opportunities—while you're a student and throughout your career.

How to **apply**

1. Review our admissions standards: go.iu.edu/review



2. Know our deadlines

November 1 is the early action deadline (non-binding) and the deadline for the highest scholarship consideration. To meet this deadline, you must submit a complete application for admission, including your official high school transcript, IU-specific essay, and self-reported or official SAT/ACT scores (if applicable*) by this date.

Application deadlines

Submit a complete application by this deadline:	Receive a response no later than:
November 1	January 15
February 1	March 15

3. Submit a complete application

You have two options to apply:

- Apply IU Application
- Common Application

Only one completed application will be accepted.

You also need to:



Submit the IU-specific essay as part of your application. Note:

If you apply via the Common Application, this essay is called the Writing Supplement for IU Bloomington.



Submit your official high school transcript.



If you took the SAT or ACT, share either your official or self-reported scores (if applicable*) by one of our application deadlines. Please note: test scores that are listed on your high school transcript do not count as self-reported—you must self-report them on your application or via our self-report form. If you self-report and are offered admission, the offer will be contingent upon receipt of official test scores from testing agencies, which must match or be higher than those you self-reported. If you self-reported scores from multiple tests, you will need to send official score reports for each test.

Ready, set, apply!



go.iu.edu/applynow

*Admission to IU is test-optional. To learn if this is the right path for you, visit: go.iu.edu/test-optional

If you're a transfer, intercampus transfer, adult, military/veteran, or second degree applicant or a visiting student, visit our website to learn how and when to apply for undergraduate admission: go.iu.edu/learn

Students admitted for fall 2022

(44% of students were test-optional)

Middle 50% **Average/Median**

High school GPA	3.62–4.00	3.90 median
SAT (Math and Evidence-Based Reading and Writing)	1230–1420	1322 average
ACT (Composite)	27–32	30 average



Cost and **scholarships**

Estimated costs for 2022–23

	Indiana residents	Nonresidents
Tuition and fees	\$ 11,446	\$ 39,118
Room and board*	\$ 12,228	\$ 12,228
Total direct costs	\$ 23,674	\$ 51,346
Books and supplies*	\$ 900	\$ 900
Transportation*	\$ 712	\$ 712
Personal expenses*	\$ 2,170	\$ 2,170
Total indirect costs	\$ 3,782	\$ 3,782
Total cost of attendance	\$ 27,456	\$ 55,128



These estimates are for full-time undergrads enrolled in 12–18 credit hours per semester in the fall and spring. Most courses are 3 credit hours.

*Actual costs vary by student, based on student choice, travel habits, and academic program.

Scholarships



IU offers a variety of scholarship opportunities, including IU Academic Scholarships and Selective Scholarship Application (SSA).

- For maximum consideration, submit a complete application for admission, including an official transcript, an IU-specific essay, and test scores (for SSA) by November 1.
- IU Academic Scholarships are test-optional.
- SSA options may require ACT/SAT scores.
- If you're invited to complete the online SSA, make sure you submit the application and requested documents by the stated deadline.
- Check out the General IU Scholarship Application on One.IU for other scholarship opportunities.

Learn more: scholarships.indiana.edu

More financial aid



Make sure to review the steps in the financial aid process in the fall of your senior year.

Your biggest to-do: submit the Free Application for Federal Student Aid (FAFSA) between October 1 and April 15.

Learn more: studentcentral.indiana.edu

Estimate your costs and financial aid:

npc.collegeboard.org/app/indiana

Get moneysmart



Our MoneySmarts program helps you establish good financial habits, make informed financial decisions, and reduce your debt.

Since 2011, we've helped IU Bloomington undergrads reduce their federal student loans by 26%. Fifty-one percent of our 2020–2021 bachelor's degree recipients graduated with no student loan debt. Nationally, that figure was about 43% in 2017–18, the last year for which data is available. In total, about 88% of our 2020–2021 bachelor's degree recipients graduated with either no debt or debt less than \$30,000.

Learn more: moneysmarts.iu.edu

Accomplished and global: our 2021 freshman class

- 64% in the top quarter of their high school class
- 54% Indiana residents
- 42% students from other U.S. states
- 4% international students
- 50% female, • 50% male
- 28% minoritized (African American, Asian American, Latino, American Indian, Native Hawaiian/Pacific Islander, or multiracial)

BECOME YOUR BEST.

Shape the next 200 years.

Explore

admissions.indiana.edu



[futurehoosiersfamilyfriends](#)

[IUAdmissions](#)

[IU_Admissions](#)

[IUAdmissions](#)

[IUAdmissions](#)

Apply (or just see how)

go.iu.edu/applynow

Visit

go.iu.edu/visit

Contact us

Office of Admissions

812-855-0661

admissions@indiana.edu



Indiana University will recruit, hire, promote, educate, and provide services to persons based upon their individual qualifications. Indiana University prohibits discrimination on the basis of age, color, disability, ethnicity, sex, gender identity, gender expression, genetic information, marital status, national origin, race, religion, sexual orientation, or veteran status. Indiana University is an equal opportunity and affirmative action employer and a provider of ADA services. Indiana University does not discriminate on the basis of sex in its educational programs and activities, including employment and admission, as required by Title IX. Questions or complaints regarding Title IX may be referred to the U.S. Department of Education Office for Civil Rights or the university Title IX coordinator. See Indiana University's Non-Discrimination/Equal Opportunity/Affirmative Action policy, which includes contact information, at go.iu.edu/non-discrimination.

The Annual Security Reports, containing policy statements and crime statistics for Indiana University campuses, are available at protect.iu.edu/police-safety/annual-reports/index.html. You can request a physical copy by emailing IU Public Safety at iups@iu.edu.

Indiana University offers numerous resources to IU employees, students, and visitors who may need additional assistance while attending, visiting, and/or working for the university. For more information about support services to help you succeed at IU, visit ada.iu.edu.

Design, writing, and photography by IU Studios. Additional photography by Bernard Clark, Ann Schertz, Max Tortoriello, Nicole Wiegand, African American Arts Institute, IU Recreational Sports, Craig Bisacre, Matt Riley, Wout Jan Balhuizen Amsterdam, and Joe Faraoni/ESPN Images.





INDIANA UNIVERSITY
BLOOMINGTON